

T. 01912368347
E. info@bruntonresidential.com
A. Brunton Residential Middleton
W. South, Wagonway Drive, NE13
9RT



Chipchase Mews

Great Park, NE3 5RH

DETACHED HOME - FOUR BEDROOMS - NO FORWARD CHAIN

Brunton Residential are delighted to offer this four bedroom home located on Chipchase Mews in Great Park. This four bedroom home is positioned on an excellent plot, it has a detached garage and benefits from no forward chain.

Offers Over £300,000

23 Chipchase Mews

Great Park, NE3 5RH



Accommodation includes; an entrance hallway with a WC. The hallway has doors to a large lounge area, the lounge runs the full depth of the property, it has windows to the front along with French doors over the rear gardens. To the other side of the hallway is a smaller sitting room or formal dining room with a window to the front while to the rear is the kitchen. The kitchen has a range of wall and floor units with coordinated work surfaces and some fitted appliances. The kitchen leads through to a utility room with access to the rear gardens.

The first floor offers a master bedroom with en-suite shower room, three further bedrooms and a bathroom WC. Externally there is a small town garden to the front with pathway access to the property, the rear of the property hosts a driveway with access to the detached garage. There is a well sized garden area which is laid mainly to lawn with walled and fenced boundaries.

ON THE GROUND FLOOR

Hallway

Lounge

22'7" x 10'5" (6.9m x 3.20m)

Kitchen

10'8" x 9'6" (3.26m x 2.90m)

Utility

5'3" x 7'3" (1.59m x 2.20m)

Dining Room

11'7" x 9'6" (3.54m x 2.90m)

WC

ON THE FIRST FLOOR

Landing

Bedroom

12'11" x 9'10" (3.96 x 3.01)

En-suite

Bedroom

9'4" x 13'7" (2.84m x 4.13m)

Bedroom

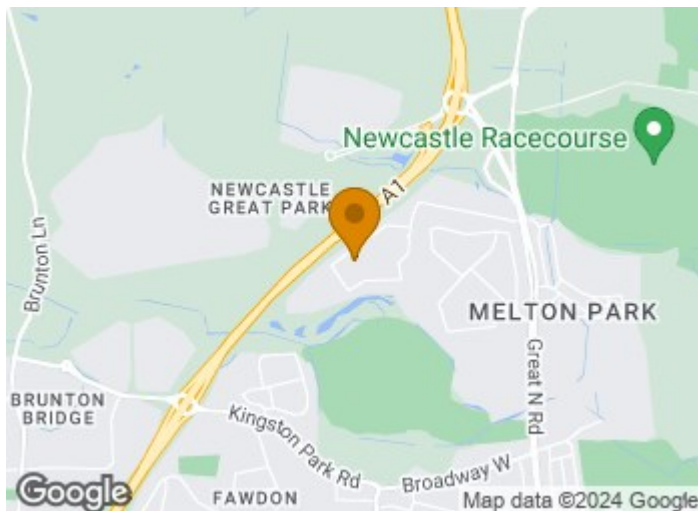
12'3" x 7'9" (3.74m x 2.37m)

Bedroom

9'10" x 10'5" (3.0 x 3.2)

Bathroom

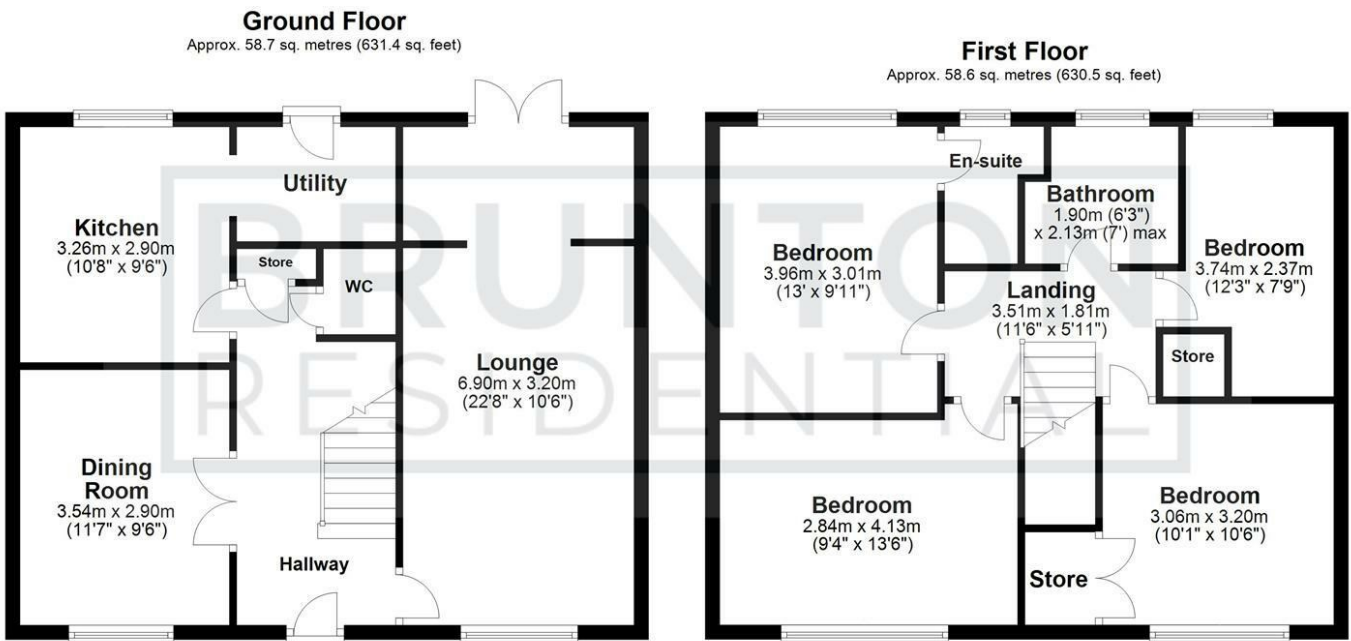
Disclaimer



- DETACHED HOUSE
- DRIVEWAY
- FOUR BEDROOMS
- NO FORWARD CHAIN
- GARAGE
- EXCELLENT GARDEN



Floor Plan



Total area: approx. 117.2 sq. metres (1262.0 sq. feet)

All measurements are approximate and are for illustration only.
Plan produced using PlanUp.

These particulars, whilst believed to be accurate are set out as a general outline only for guidance and do not constitute any part of an offer or contract. Intending purchasers should not rely on them as statements of representation of fact, but must satisfy themselves by inspection or otherwise as to their accuracy. No person in this firm's employment has the authority to make or give any representation or warranty in respect of the property.

