

T. 01670 202008
Emorpeth@bruntonresidential.co
A. 28a Bridge Street , NE61 1NL
W. bruntonresidential.com



Rose Gardens

Blossom Park Morpeth, NE61 6FU

THREE BEDROOM - DOUBLE PARKING - SOUGHT AFTER LOCATION

Brunton Residential are delighted to offer this semi-detached home located on Rose Gardens in Blossom Park. This three bedroom property offers fantastic living accommodation with a stunning finish throughout and would make an excellent family home.

Offers Over £219,950

9 Rose Gardens

Blossom Park Morpeth, NE61 6FU



The residence welcomes you with an inviting entrance hallway, featuring two doors to the right, one leading to the WC and the other to a spacious lounge with a large window to the front. Transitioning from the lounge is a door that opens into a generously proportioned kitchen/dining room, adorned with sleek floor and wall units. A conveniently located storage cupboard under the stairs adds practicality to the space.

Ascending to the first floor reveals three bedrooms, including a sizable master bedroom with an en-suite, a generously sized room, and a slightly smaller room presently utilized as an office. The first floor is completed by a family bathroom and a landing area.

Situated at the property's front, a driveway provides parking space for two cars, to the rear garden it provides a patio area for outdoor enjoyment, and a garden shed—perfect for storage needs. Nestled in Blossom Park, within the historic mining village of Pegswood, the residence offers a convenient location just two miles east of Morpeth.

ON THE GROUND FLOOR

Hallway

WC

Living Room

16'5" x 12'0" (5.00m x 3.65m)

Kitchen/Dining Room

10'10" x 15'1" (3.30m x 4.60m)

Store

ON THE FIRST FLOOR

Landing

Bathroom

Bedroom

9'3" x 6'6" (2.81m x 1.99m)

Bedroom

10'10" x 8'3" (3.30m x 2.51m)

En-suite

Bedroom

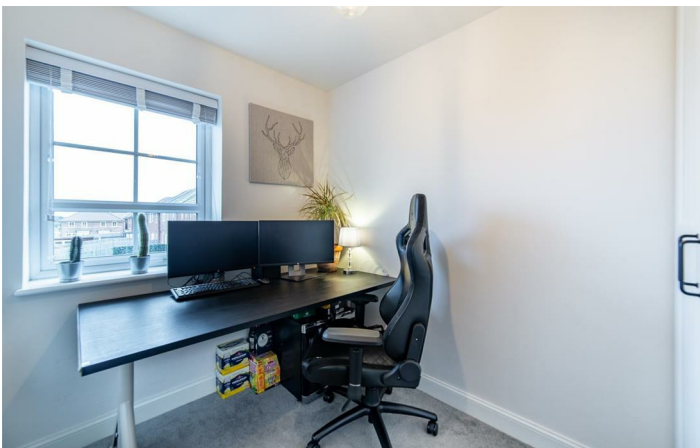
6'7" x 8'3" (2.00m x 2.51m)

Store

Disclaimer



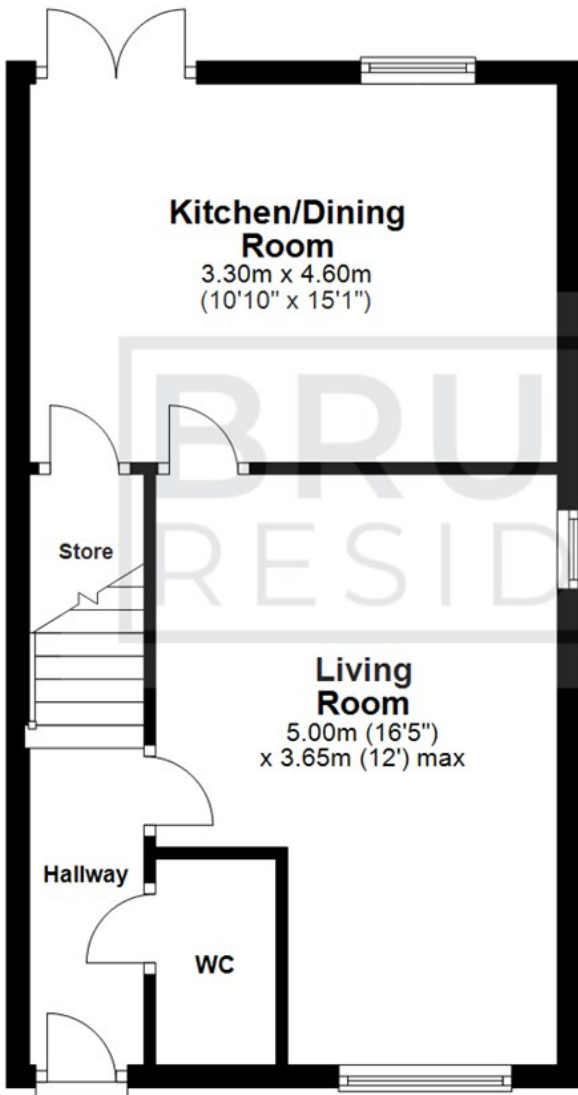
- THREE BEDROOM SEMI-DETACHED
- DOUBLE PARKING
- FANTASTIC CONDITION
- SOUGHT AFTER LOCATION
- PERFECT FIRST TIME BUY
- EN-SUITE



Floor Plan

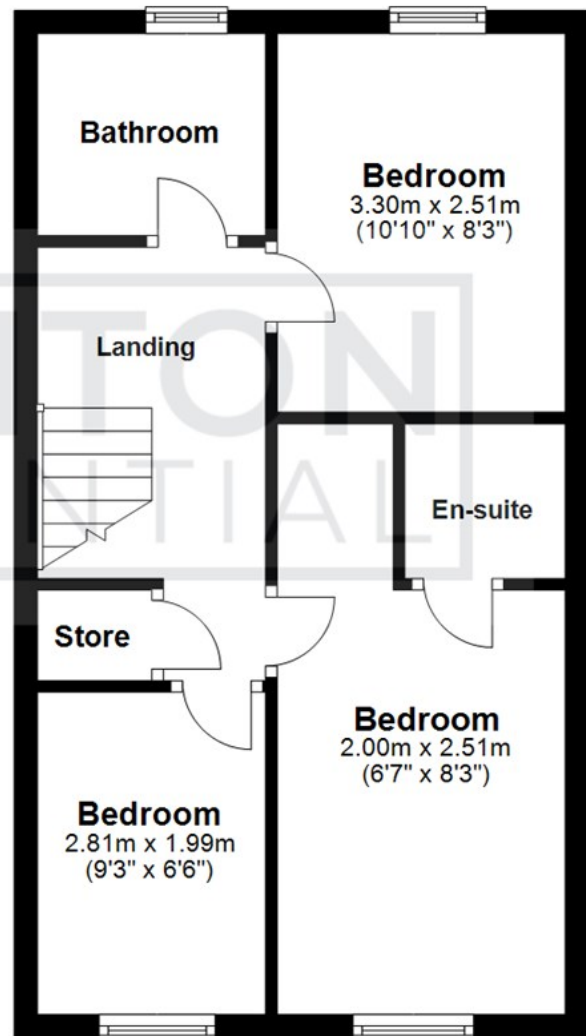
Ground Floor

Approx. 37.5 sq. metres (403.9 sq. feet)



First Floor

Approx. 39.4 sq. metres (423.9 sq. feet)



All measurements are approximate and are for illustration only.
Plan produced using PlanUp.

These particulars, whilst believed to be accurate are set out as a general outline only for guidance and do not constitute any part of an offer or contract. Intending purchasers should not rely on them as statements of representation of fact, but must satisfy themselves by inspection or otherwise as to their accuracy. No person in this firm's employment has the authority to make or give any representation or warranty in respect of the property.

