

## Duke Street

### Smiths Dock North Shields, NE29 6BU

SECOND FLOOR APARTMENT - MODERN PROPERTY - PERFECT FIRST TIME BUY

Brunton Residential are delighted to offer this fantastic apartment located in the Smith's Dock development in North Shields. This beautiful property is perfectly situated with views of the River Tyne and the mouth of the Tyne, close to all the local boutique bars and restaurants.

**£129,950**

# Smokehouse One Duke Street

## Smiths Dock North Shields, NE29 6BU



The accommodation is located on the 2nd-floor and briefly comprises: entrance hallway, open plan lounge/kitchen with feature window showcasing a Westerly view over the Tyne River capturing the afternoon and evening sun, there is a well sized double bedroom and a high spec bathroom with shower over bath. Externally there is the use of an external cycle storeroom and stunning communal landscaped grounds with seating areas and visitor parking.

Viewing is necessary to appreciate the accommodation on offer, the property would be ideal for professionals or couples.

For more information about this fantastic development see <https://www.smithsdock.co.uk/>

### Open Plan Living

23'0" x 13'5" (7.00m x 4.08m)

### Bedroom

15'1" x 11'10" (4.61m x 3.60m)

### Bathroom

### Hall

### Disclaimer



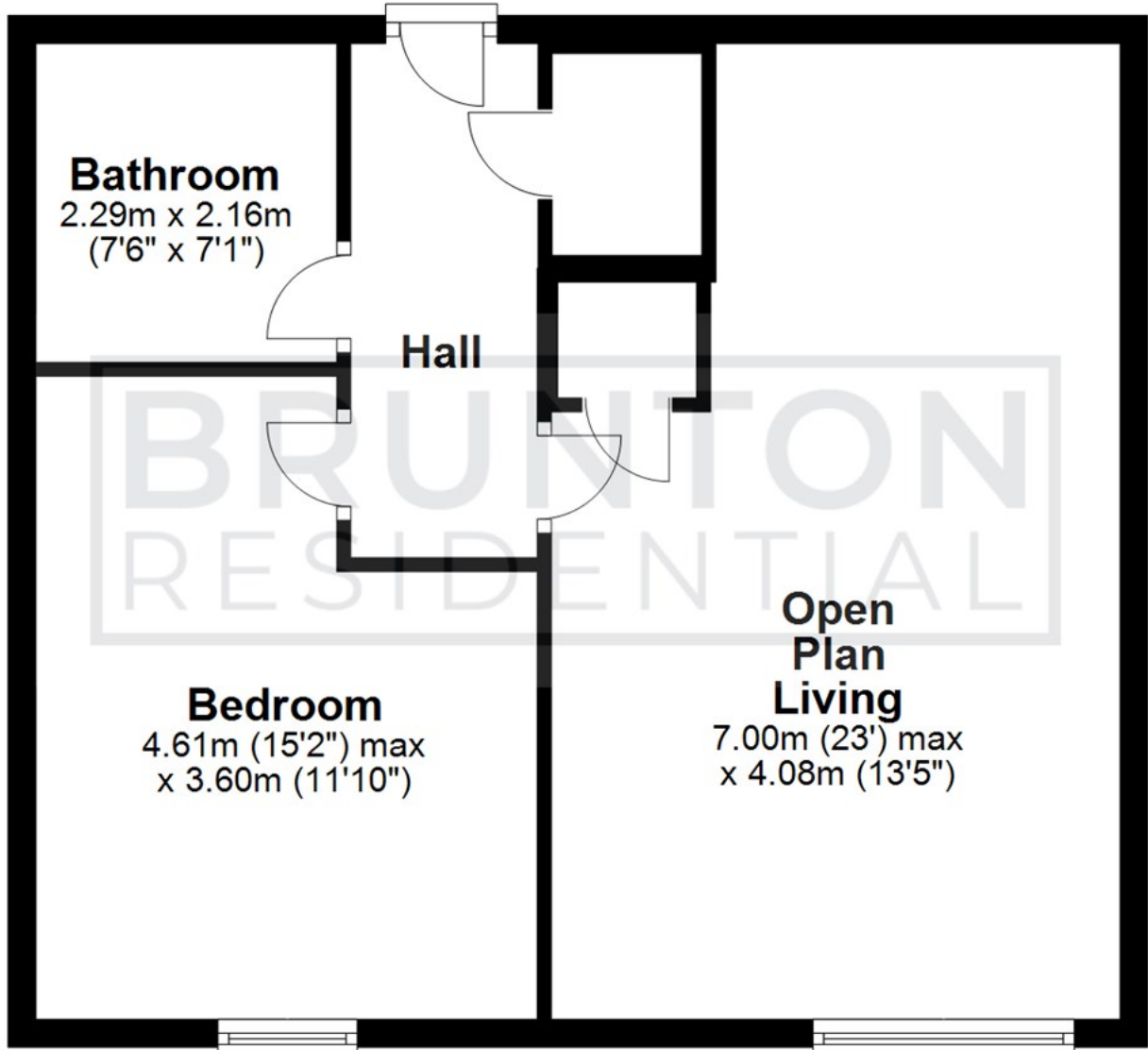
- RIVER VIEWS
- OPEN PLAN
- SECOND FLOOR
- EXCELLENT LOCATION
- ONE BEDROOM
- PERFECT FIRST TIME BUY



## Floor Plan

### Second Floor

Approx. 54.4 sq. metres (586.0 sq. feet)



All measurements are approximate and are for illustration only.  
Plan produced using PlanUp.

These particulars, whilst believed to be accurate are set out as a general outline only for guidance and do not constitute any part of an offer or contract. Intending purchasers should not rely on them as statements of representation of fact, but must satisfy themselves by inspection or otherwise as to their accuracy. No person in this firm's employment has the authority to make or give any representation or warranty in respect of the property.

