

T. 01912368347
E. info@bruntonresidential.com
A. Brunton Residential Middleton
W. South, Wagonway Drive, NE13
9RT



Gatekeeper Close

Great Park, NE13 9EH

EXCELLENT CONDITION - SOUGHT AFTER LOCATION - PERFECT STARTER HOME

Brunton Residential are delighted to offer for sale this three-bedroom townhouse located on Gatekeeper Close in Great Park. This home is in a fantastic condition throughout and would make a perfect home for first time buyers.

Offers Over £195,000

10 Gatekeeper Close

Great Park, NE13 9EH



Accommodation briefly comprises of; entrance porch, lounge with window to front, breakfasting kitchen with French door access to rear gardens and an internal hallway with WC & staircase to first floor. The kitchen has a range of wall and floor units with coordinated work surfaces and some fitted appliances. The first floor consists of two bedrooms of equal size, both would fit a double bed with furniture while a family bathroom is in between. The top floor boasts a large master bedroom with ample storage. With this being an end of terrace, this home has a Dorma style window to the front, this allows more natural light and a better all round aesthetic to the top floor.

Externally, there is a small town garden to the front with pathway access to the property and designated parking space. The rear garden is laid with artificial lawn with pathway access to garden shed with fenced boundaries.

ON THE GROUND FLOOR

Porch

Lounge

15'0" x 12'0" (4.57m x 3.67m)

Kitchen

8'11" x 12'0" (2.72m x 3.67m)

WC

Bedroom

8'8" x 12'0" (2.63m x 3.67m)

Bathroom

ON THE SECOND FLOOR

Bedroom

25'11" x 8'7" (7.90m x 2.61m)

Disclaimer

ON THE FIRST FLOOR

Bedroom

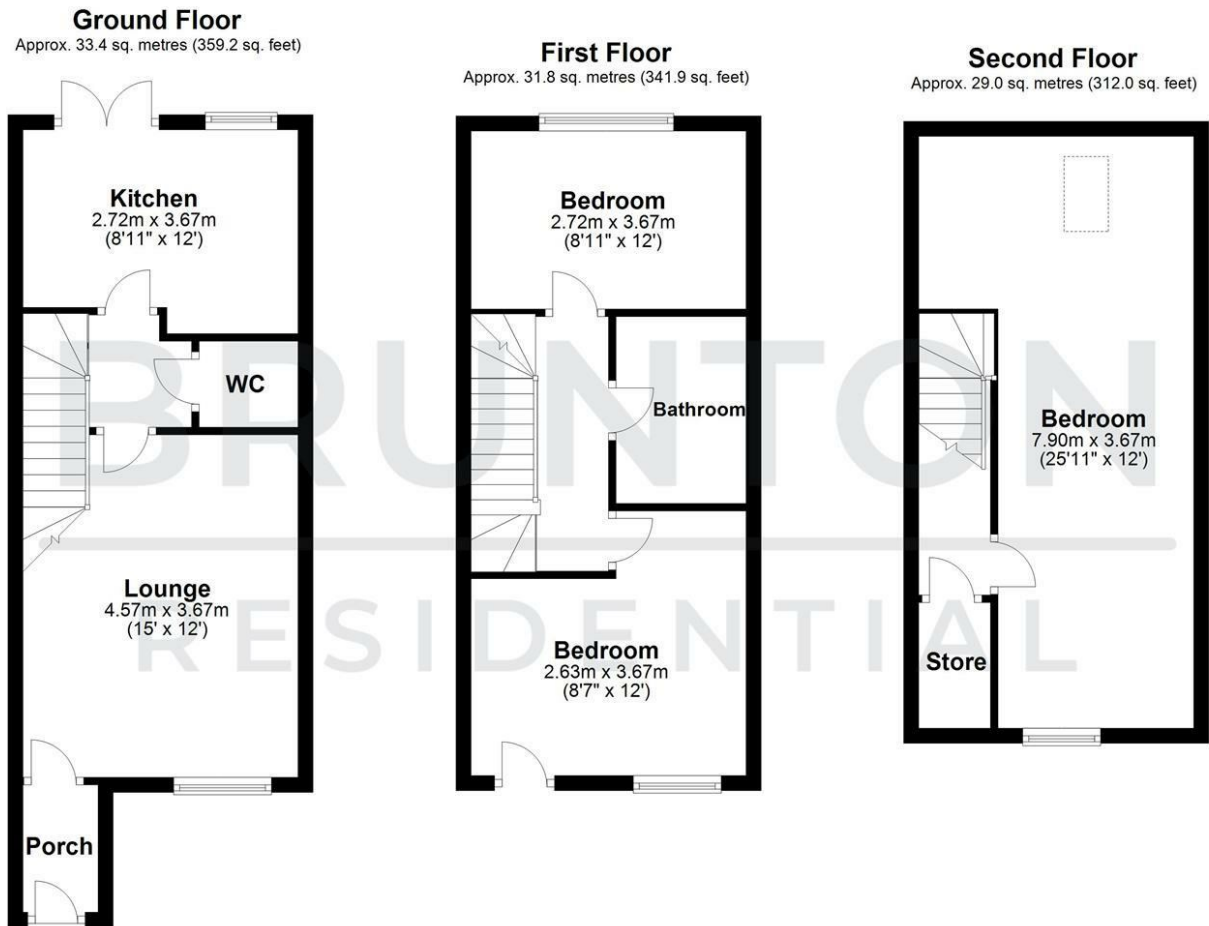
8'11" x 12'0" (2.72m x 3.67m)



- GREAT CONDITION
- TOWNHOUSE
- SOUGHT AFTER LOCATION
- END TERRACE
- THREE BEDROOMS
- OFF-STREET PARKING



Floor Plan



Total area: approx. 94.1 sq. metres (1013.1 sq. feet)

All measurements are approximate and are for illustration only.
Plan produced using PlanUp.

These particulars, whilst believed to be accurate are set out as a general outline only for guidance and do not constitute any part of an offer or contract. Intending purchasers should not rely on them as statements of representation of fact, but must satisfy themselves by inspection or otherwise as to their accuracy. No person in this firm's employment has the authority to make or give any representation or warranty in respect of the property.

