

T. 01670 202008  
Emorpeth@bruntonresidential.co  
A. 28a Bridge Street , NE61 1NL  
W. bruntonresidential.com



## The Green

### Longframlington Morpeth, NE65 8AQ

DETACHED BUNGALOW - THREE BEDROOMS - LARGE PLOT

Brunton Residential are delighted to offer for sale this superb bungalow located on The Green in Longframlington. This superb property is perfectly positioned, set back from the street. It offers a fantastic home with stunning gardens or there is also potential to build in the expansive garden space.

**£450,000**

# The Green

Longframlington Morpeth, NE65 8AQ



Accommodation comprises; a conservatory which is used as a reception porch, there is an internal hallway with access to all rooms. The lounge has a windows to the front and side with a feature fireplace, there are double doors to a separate dining room which in turn leads to a fitted kitchen. From the kitchen is a fitted utility room which has access to the rear gardens.

There is a mater bedroom with fitted wardrobes and a bathroom WC, there are two further bedrooms and a shower room. The external spaces of this property are fantastic. There is a long driveway to the front which offer parking for multiple cars along with access to a double garage and single carport, there is a range of planted and paved areas which wrap around the front and sides. The rear of the property consists of a large garden space, there is a range of lawned, planted and gravelled areas with fenced boundaries.

## Conservatory

## Hallway

## Lounge

18'9" x 14'2" (5.71m x 4.33m)

## Kitchen

10'2" x 14'2" (3.11m x 4.33m)

## Dining Room

10'6" x 14'2" (3.20m x 4.33m)

## Utility

5'3" x 14'2" (1.61m x 4.33m)

## Master Bedroom

15'11" x 8'4" (4.85m x 2.54m)

## En-suite

8'6" x 11'6" (2.60m x 3.51m)

## Bedroom

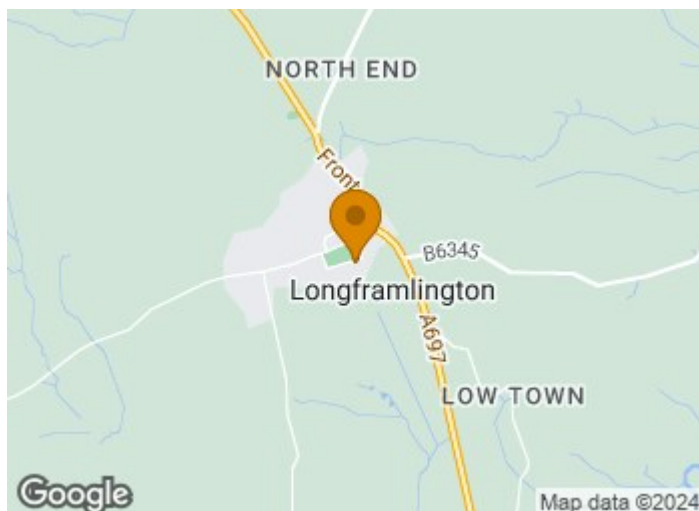
8'6" x 10'10" (2.60m x 3.30m)

## Bedroom

9'9" x 12'0" (2.98m x 3.66m)

## Shower Room

8'6" x 5'9" (2.60m x 1.76m)



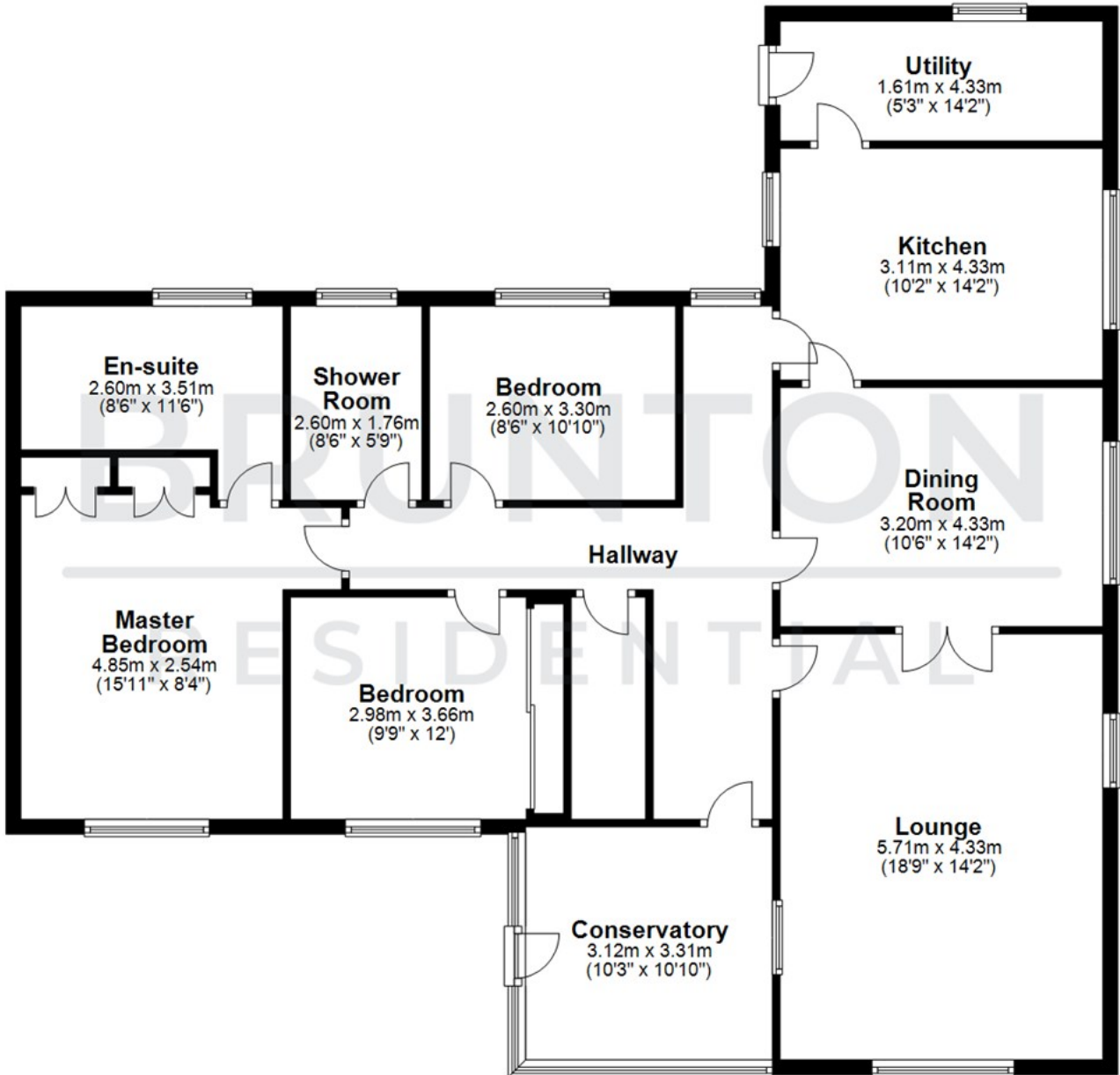
- DETACHED BUNGALOW
- WRAP AROUND GARDENS
- LARGE PLOT
- LONG DRIVEWAY
- DOUBLE GARAGE
- THREE BEDROOMS



## Floor Plan

### Ground Floor

Approx. 141.2 sq. metres (1520.1 sq. feet)



Total area: approx. 141.2 sq. metres (1520.1 sq. feet)

All measurements are approximate and are for illustration only.  
Plan produced using PlanUp.

These particulars, whilst believed to be accurate are set out as a general outline only for guidance and do not constitute any part of an offer or contract. Intending purchasers should not rely on them as statements of representation of fact, but must satisfy themselves by inspection or otherwise as to their accuracy. No person in this firm's employment has the authority to make or give any representation or warranty in respect of the property.

