

T. 0191 236 8347  
E. info@bruntonresidential.com  
A. 125 St George's Terrace, NE2  
W. 2DN  
bruntonresidential.com



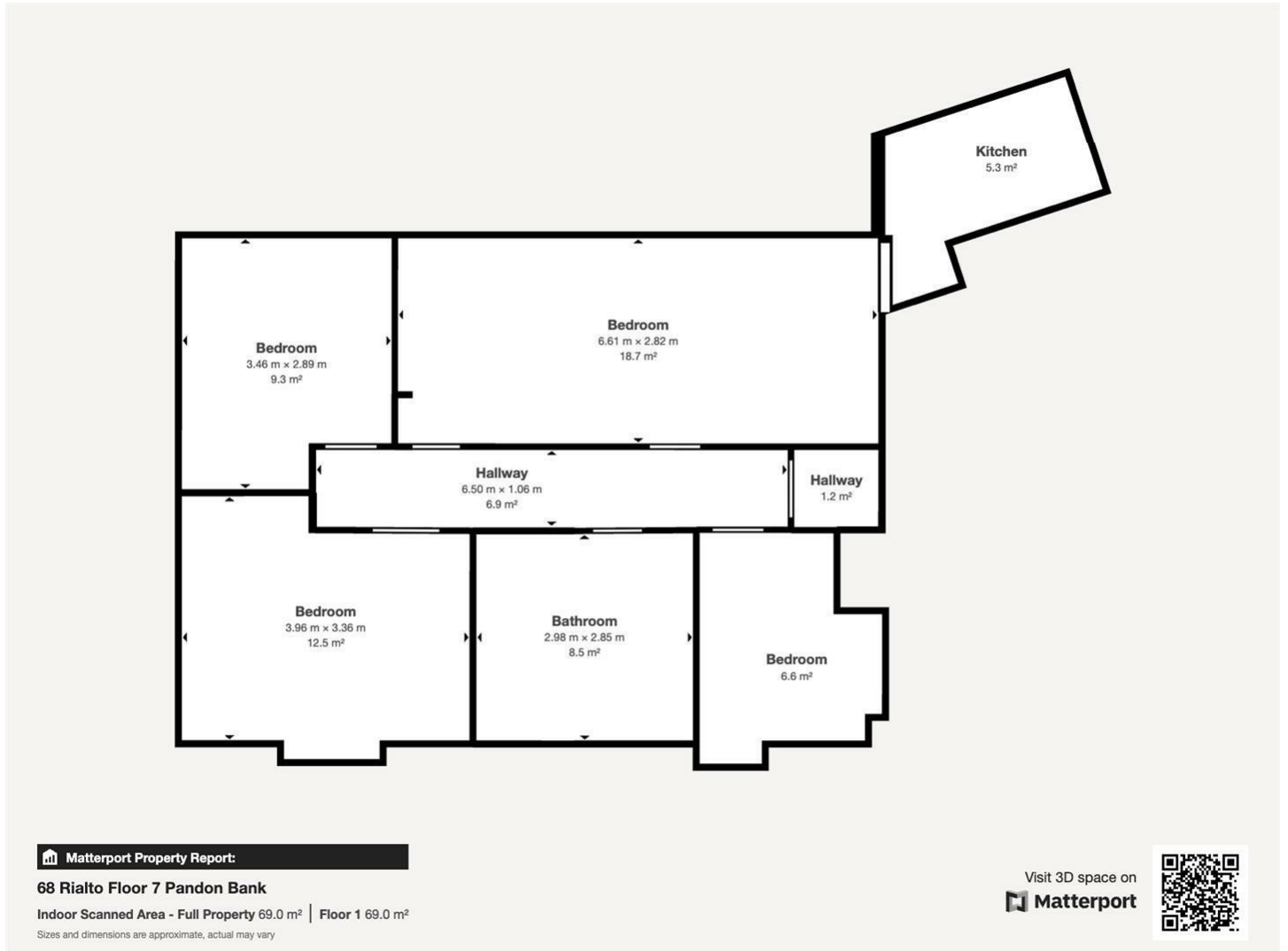
## Melbourne Street, City Centre, NE1 2JR

£1,495 Per Month

\*\*\*360 Virtual Tour\*\*\* Rent £115pppw / £1495pcm - 3 Bedroom Apartment - Master Bedroom With En-Suite - Open Plan Kitchen Living Space - Fully Modernised Within - Available Furnished - Students Welcome - Council Tax Band C - EPC Rating of C



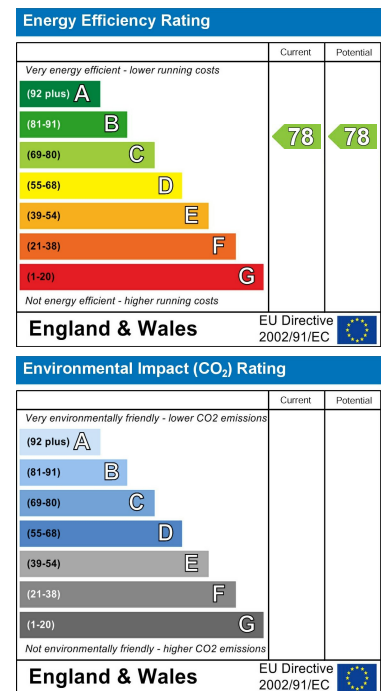
## Floor Plan



## Area Map



## Energy Efficiency Graph



These particulars, whilst believed to be accurate are set out as a general outline only for guidance and do not constitute any part of an offer or contract. Intending purchasers should not rely on them as statements of representation of fact, but must satisfy themselves by inspection or otherwise as to their accuracy. No person in this firm's employment has the authority to make or give any representation or warranty in respect of the property.

125 St George's Terrace, Jesmond, Newcastle upon Tyne, Tyne & Wear, NE2 2DN