

BRUNTON

RESIDENTIAL



BRAMBLING PLACE, FIVE MILE PARK, NE13

Offers Over £400,000

BRUNTON

RESIDENTIAL





BRUNTON

RESIDENTIAL



BRUNTON

RESIDENTIAL



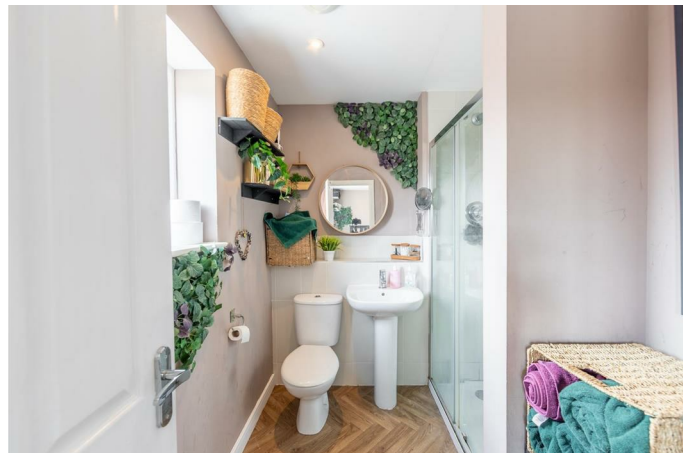
Delightful detached four-bedroom family home situated on Brambling Place in Five Mile Park. The property is well-presented and offers an ideal family home with a detached garage, off-street parking, and a private rear garden.

The ground floor boasts spacious lounge, kitchen, and dining room areas. The first floor hosts four generously sized bedrooms with three bathrooms, two of which are en-suites. The property further benefits from a versatile enclosed rear garden providing a lovely space for outdoor relaxation.

Located in the highly desirable area of Five Mile Park, the home enjoys excellent proximity to local shops, amenities, and well-rated schools. It also benefits from great transport links into Newcastle city centre and the surrounding areas, making it an ideal choice for families seeking comfort and convenience.

BRUNTON

RESIDENTIAL



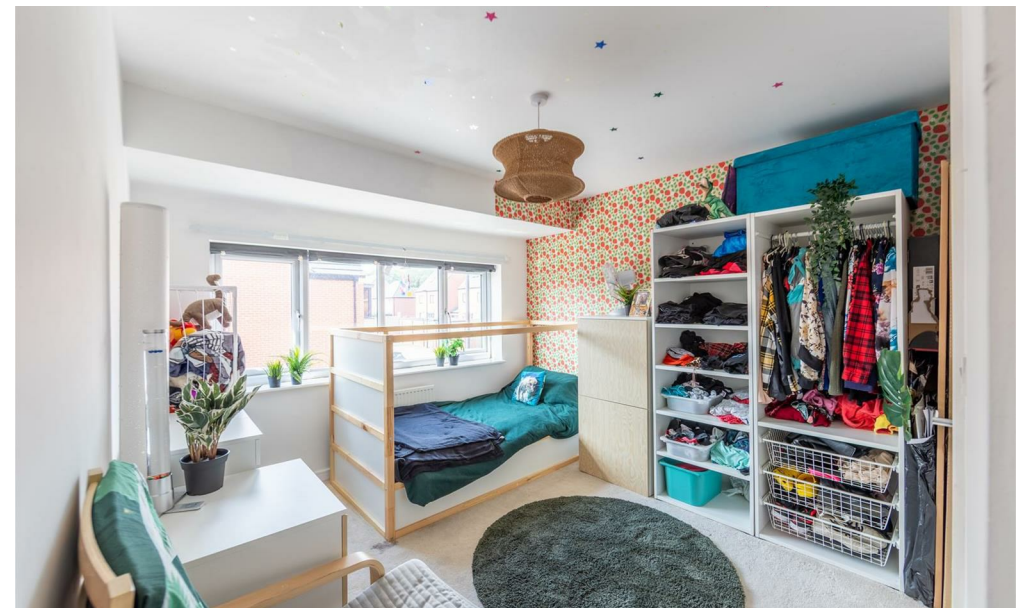
BRUNTON

RESIDENTIAL

The internal accommodation comprises: An entrance hallway with stairs leading to the first-floor landing. To the left is a spacious dining room with a front-aspect window, and to the right is a generous lounge featuring a front-aspect bay window. At the rear of the ground floor is a modern kitchen, well-equipped with integral appliances and floor and wall units offering ample storage space and work surfaces. The kitchen opens into a family room, with both areas featuring French doors that lead out to the rear garden. The ground floor further benefits from a convenient downstairs WC and an under-stair storage cupboard.

The first-floor landing provides access to four well-proportioned bedrooms. The master bedroom, located to the right of the property, benefits from an en-suite shower room. Bedrooms 2 and 3, situated to the left of the property, share a Jack-and-Jill en-suite shower room. A family bathroom services the fourth bedroom.

Externally, the property features a long driveway to the right, leading to a garage and providing off-street parking for two to three cars. To the rear, the enclosed garden includes paved, gravel, and lawned areas, offering a versatile space for various relaxation and outdoor activities.



BRUNTON

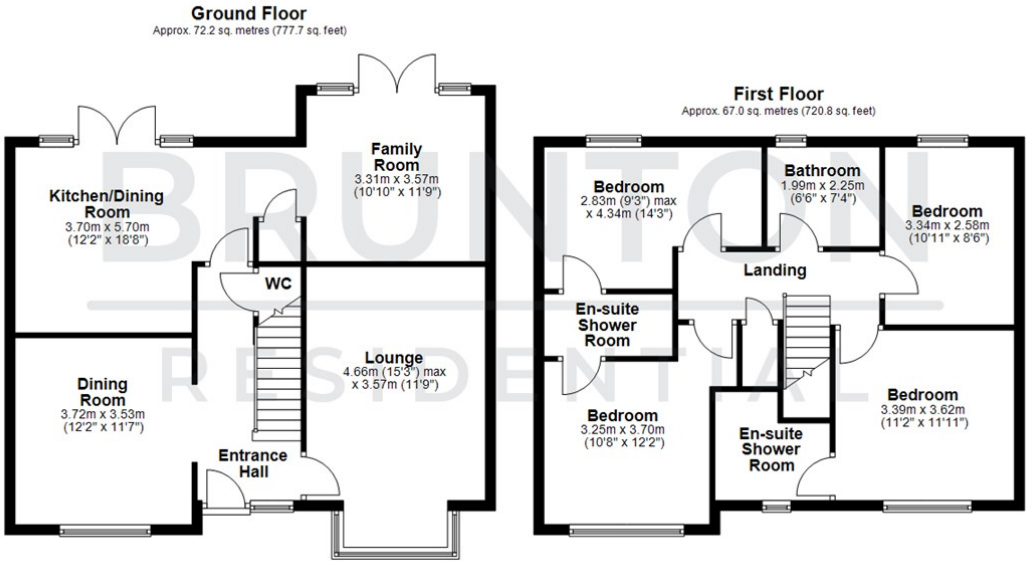
RESIDENTIAL

TENURE : Leasehold

LOCAL AUTHORITY : North Tyneside

COUNCIL TAX BAND : E

EPC RATING : B



All measurements are approximate and are for illustration only.
Plan produced using PlanUp.

Energy Efficiency Rating		
	Current	Potential
Very energy efficient - lower running costs		
(92 plus) A		
(81-91) B		
(69-80) C		
(55-68) D		
(39-54) E		
(21-38) F		
(1-20) G		
Not energy efficient - higher running costs		
England & Wales	EU Directive 2002/91/EC	

Environmental Impact (CO ₂) Rating		
	Current	Potential
Very environmentally friendly - lower CO ₂ emissions		
(92 plus) A		
(81-91) B		
(69-80) C		
(55-68) D		
(39-54) E		
(21-38) F		
(1-20) G		
Not environmentally friendly - higher CO ₂ emissions		
England & Wales	EU Directive 2002/91/EC	