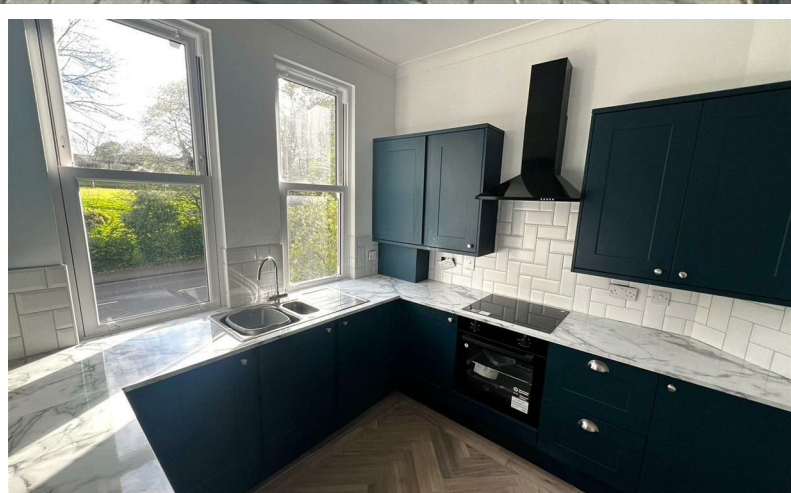


**Rice  
hamberlains**  
ESTATE AGENTS LLP



**£1,350 Per Month**

Flat 2 50 Salisbury Road, Moseley, Birmingham, West Midlands, B13 8JT



# Flat 2 50 Salisbury Road, Moseley, Birmingham, West Midlands, B13 8JT

**\*\* WONDERFUL CHARACTER, RECENTLY RENOVATED THROUGHOUT AND PICTURESQUE VIEWS OF MOSELEY PARK! FIRST FLOOR FLAT \*\*** We are delighted to offer to the market this exceptional opportunity to rent a little piece of Moseley charm and history! This two bedroom, first floor, converted apartment boasts a wealth of character and period features and has unrivalled views from the living room of Moseley Private Park and Pool! Being recently renovated throughout, the accommodation offered consists of; communal parking, communal entrance, entrance hallway, superb character living room with fireplace and stunning views, integrated kitchen, two good bedrooms, re-fitted modern shower room and lovely communal gardens overlooking Moseley Private Park and Pool. For further information or to arrange your viewing please either call our Lettings team.

## Credit References and Deposit

Prospective tenants will be required to complete a credit referencing application payable whether successful or not. Prior to taking occupation of the property you will be required to pay a deposit of 1½ times the monthly rent, the first months rent in advance and an administration fee.

## Directions

