



30 Whoberley Avenue, Coventry - CV5 8EP  
£245,000

Williams  
BINCH





## 30 Whoberley Avenue

Coventry, Coventry

**Charming 3-bed mid-terraced house in vibrant neighbourhood. Period features, cosy lounge, private garden, parking space. Tranquil oasis close to amenities and schools. EPC C. A slice of paradise awaits!**

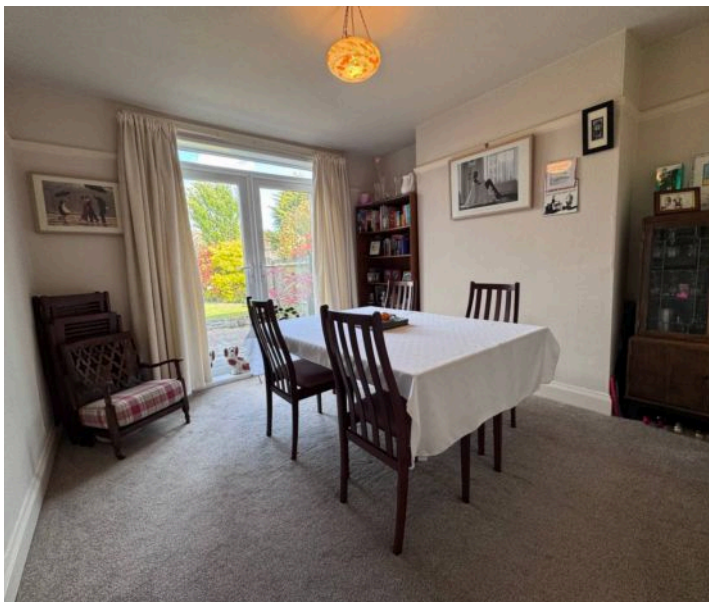
**Council Tax band: B**

**Tenure: Freehold**

**EPC Energy Efficiency Rating: C**

**EPC Environmental Impact Rating:**

- **Traditional Single Bayed Home**
- **Excellent Local Amenities And School Catchments**
- **Lounge With Feature Bay Window**
- **Dining Room With French Doors To Rear Garden**
- **Gas Central Heating - Double Glazing**
- **Filled With Gorgeous Original Features Including Doors, Minton Tiled Floor, Original Feature Fireplaces And Picture Rails**
- **Lovely Gardens To Front And Rear. Rear Parking Space**
- **EPC C**









[sales@williamsandbinch.co.uk](mailto:sales@williamsandbinch.co.uk)

02476 011400



**Location**  
Whoberley Avenue

**Details**  
3 bedrooms  
1 bathroom



**Disclaimer**  
Although every care has been taken, measurements are approximate & no responsibility is taken for error.

Plan is for illustrative purposes only.

