



14 Howat Road, Keresley End - CV7 8JP

Offers in Region of £185,000

Williams
BIRCH



14 Howat Road

Keresley End, Coventry

Charming 3-bed semi-detached house in quiet neighbourhood. Modern kitchen, spacious lounge/diner, fitted bathroom. WC, Large rear garden. Gas heating, double-glazed windows, EPC rating C. Ideal home for you!

Council Tax band: A

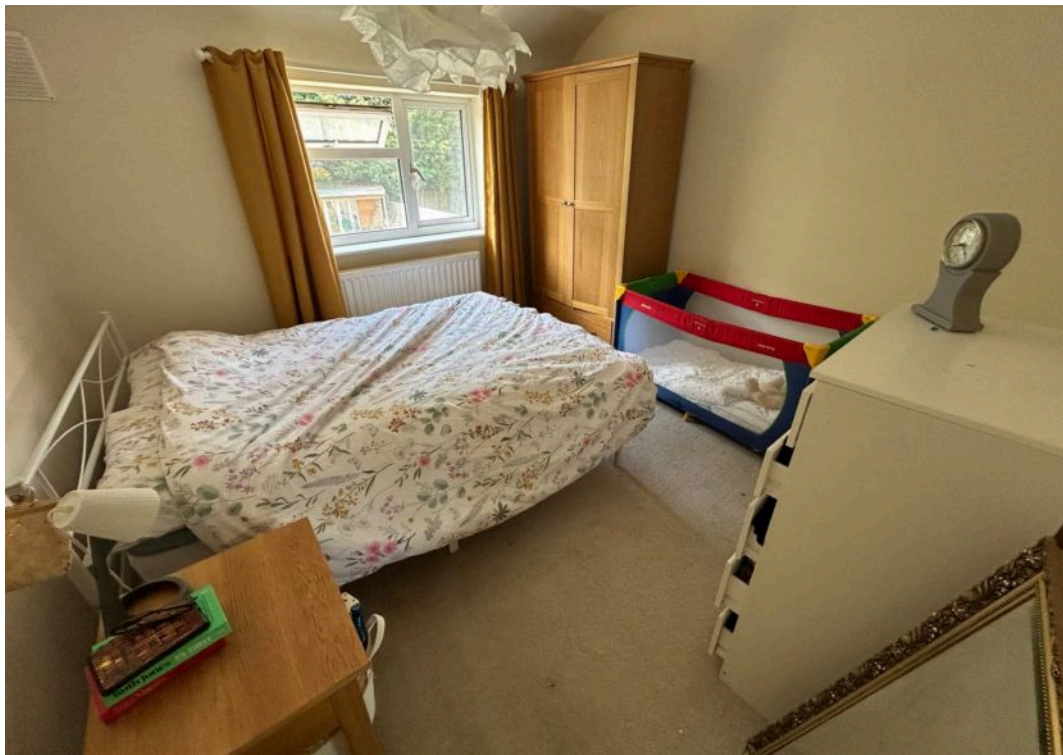
Tenure: Freehold

EPC Energy Efficiency Rating: C

EPC Environmental Impact Rating: C

- Newly Fitted Bathroom
- Lovely Lounge / Diner
- Newly Fitted Kitchen
- WC
- Drive
- Gas Central Heating - Double Glazing
- EPC C
- Superb Semi Detached Home
- 3 Bedrooms
- Excellent Local Amenities





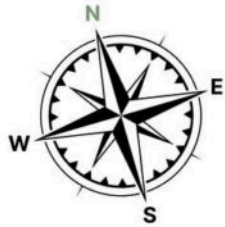
sales@williamsandbinch.co.uk

02476 011400



Location
Howat Road, CV7 8JP

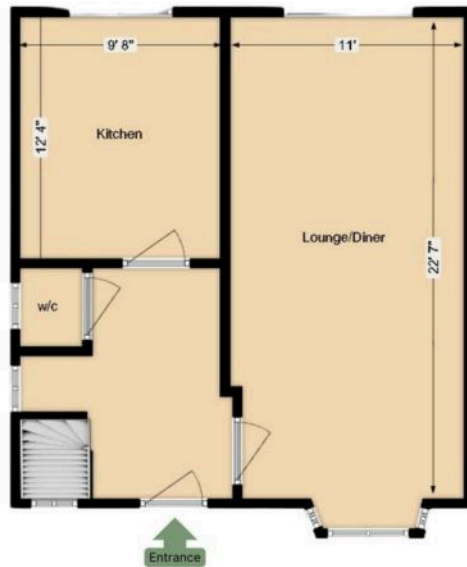
Details
3 bedroom
1 bathroom, 1 w/c



Disclaimer
Although every care has been taken, measurements are approximate & no responsibility is taken for error.

Plan is for illustrative purposes only.

Ground Floor



First Floor

