



22 Adderley Street, Coventry - CV1 5AT

Offers in Region of £215,000

Williams
BINCH

22 Adderley Street

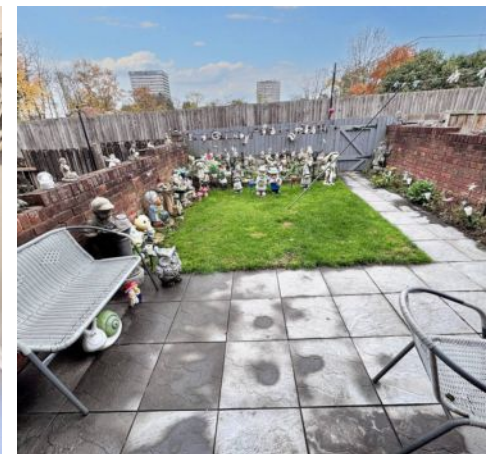
Coventry, Coventry

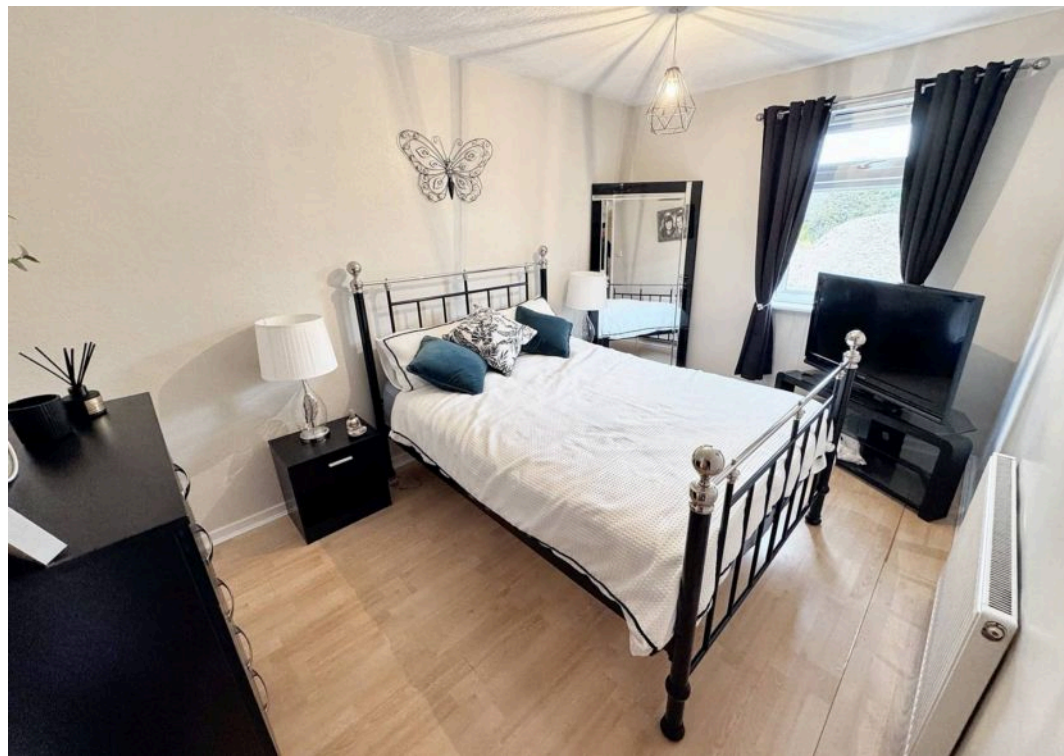
Superb traditional terraced home in vibrant neighbourhood, offers 4 bedrooms, lounge, kitchen/diner, drive, garden, and family shower room. Gas heating, double glazing, EPC C. Excellent value - make it yours today!

Council Tax band: B

Tenure: Freehold

- Superb Traditional Terraced Home
- Excellent Location With Local Amenities And Transport Links
- Gorgeous Lounge
- Fitted Kitchen / Diner
- 4 Bedrooms (Ground Floor Bedroom Could Be A Office / Studio)
- Large Family Shower Room
- Drive To Front & Garden To Rear
- Gas Central Heating - Double Glazing
- Excellent Value For Money
- EPC C





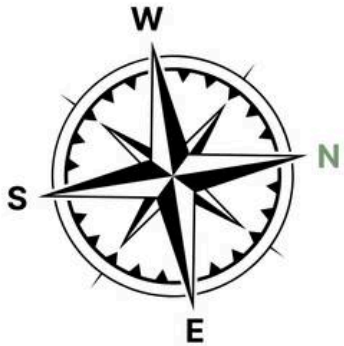


Location

Berkeley Road South, Earlsdon

Details

3 bedrooms + bedroom/studio
1 shower room

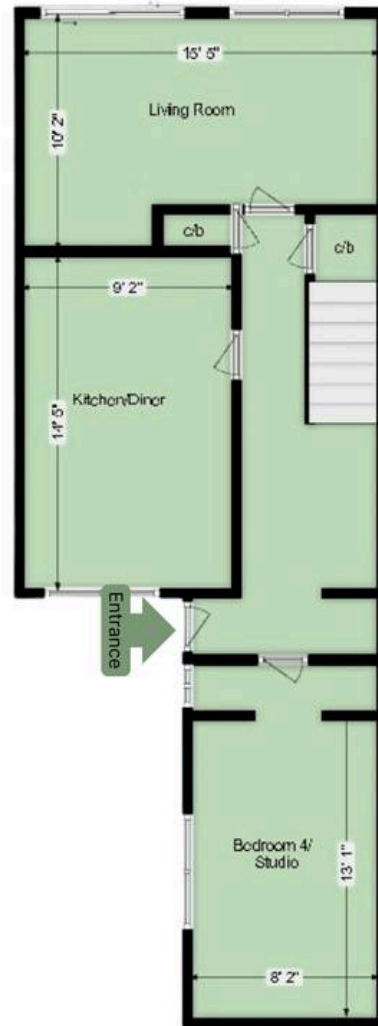


Disclaimer

Although every care has been taken, measurements are approximate & no responsibility is taken for error.

Plan is for illustrative purposes only.

Ground Floor



First Floor

