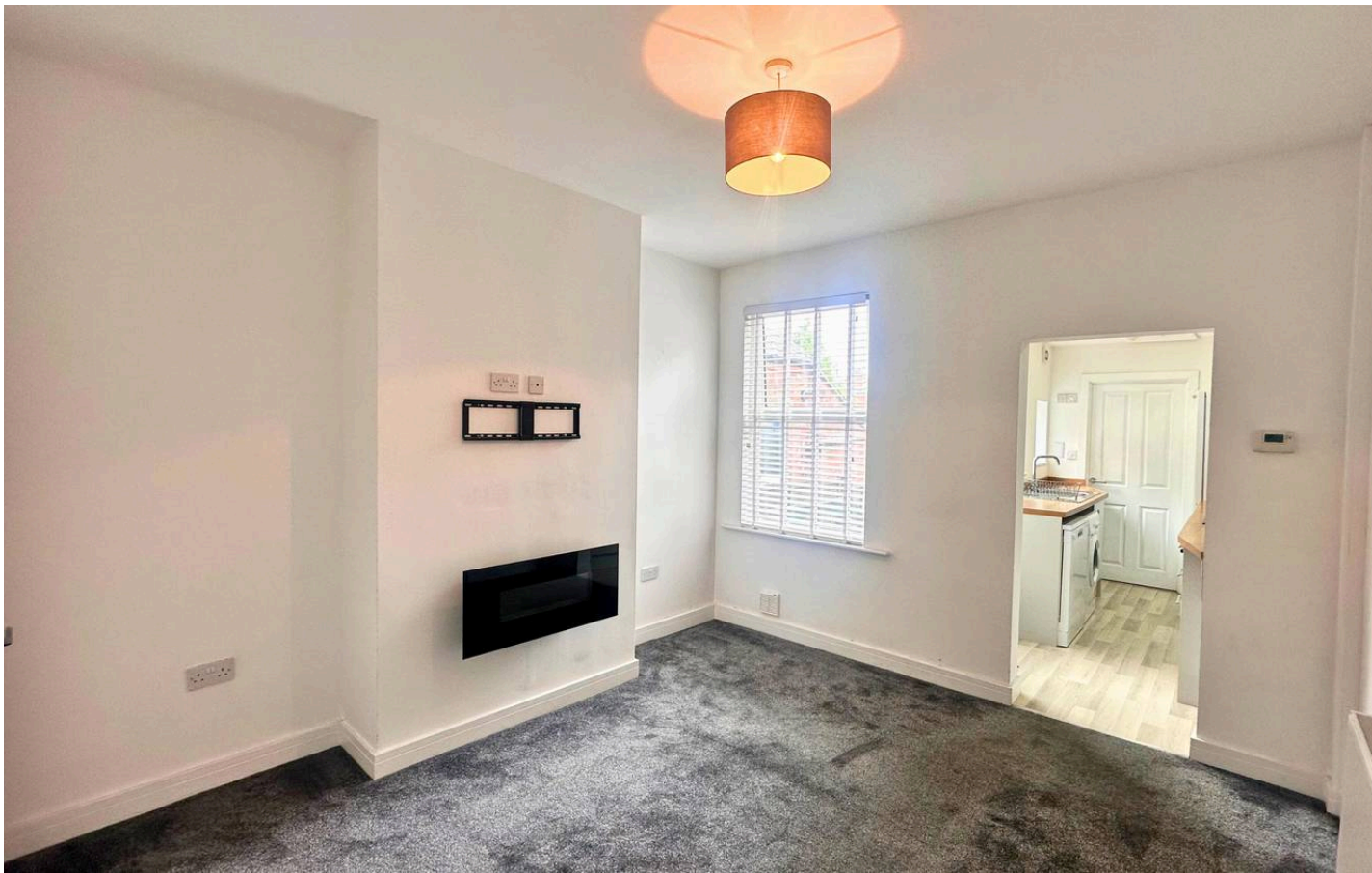




**94 Melbourn Road, Earlsdon – CV5 6JL**  
**£1,200 pcm**





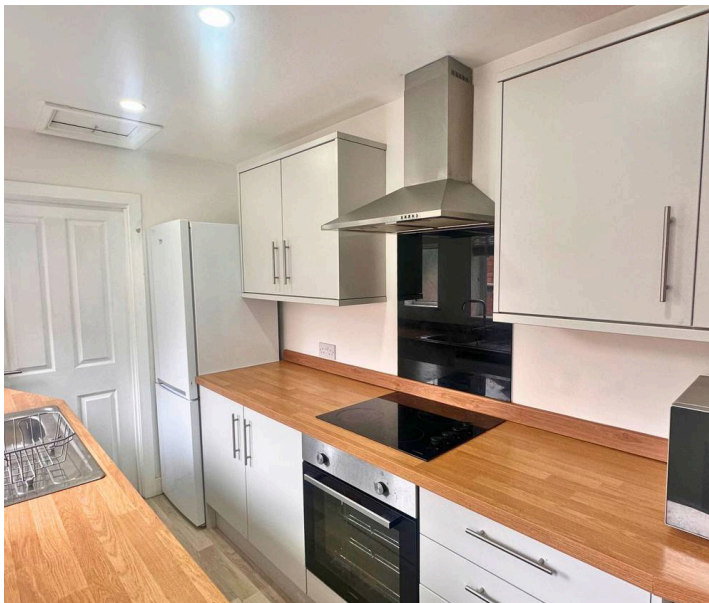
## 94 Melbourne Road

Earlsdon, Coventry

**Modern 3-bed property in sought-after Earlsdon. Stylish interior, fitted kitchen, private garden. Walking distance to High Street, easy access to city centre. Contact for viewing – high demand location!**

**Council Tax band: A**

- **Modern kitchen with integrated appliances**
- **Contemporary bathroom with walk-in shower**
- **Private low-maintenance garden**
- **Charming fireplace**
- **Ample built-in storage**
- **Large windows with natural light**
- **Period terraced house features**
- **On-street parking**
- **Neutral decor throughout**
- **Direct kitchen-living access**









**[lettings@williamsandbinch.co.uk](mailto:lettings@williamsandbinch.co.uk)**  
**02476 011400**

