



Apt 9, Whittle House, 19 Warwick Street, Earlsdon, Coventry – CV5 6BQ
Offers in Region of **£270,000**



Apartment 9, Whittle House, 19 Warwick Street

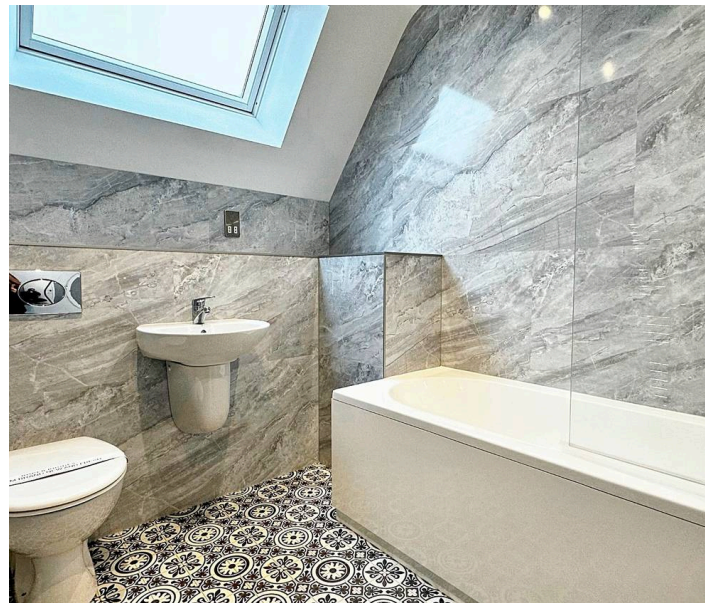
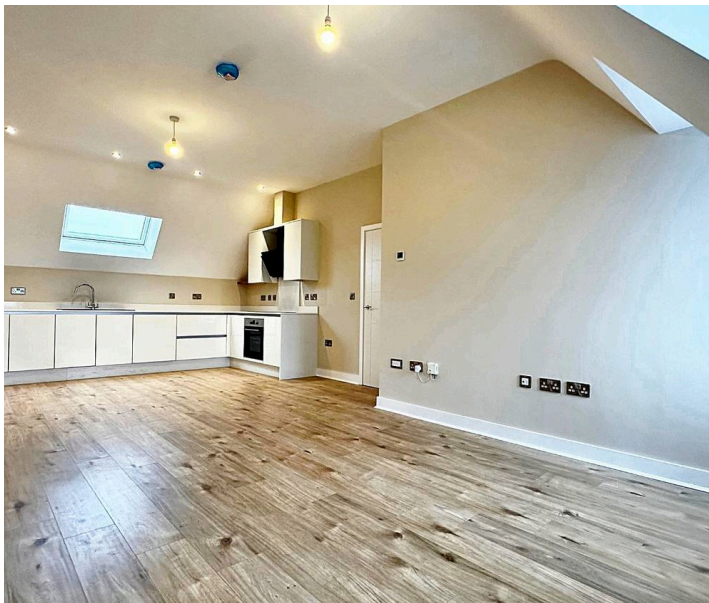
Earlsdon, Coventry

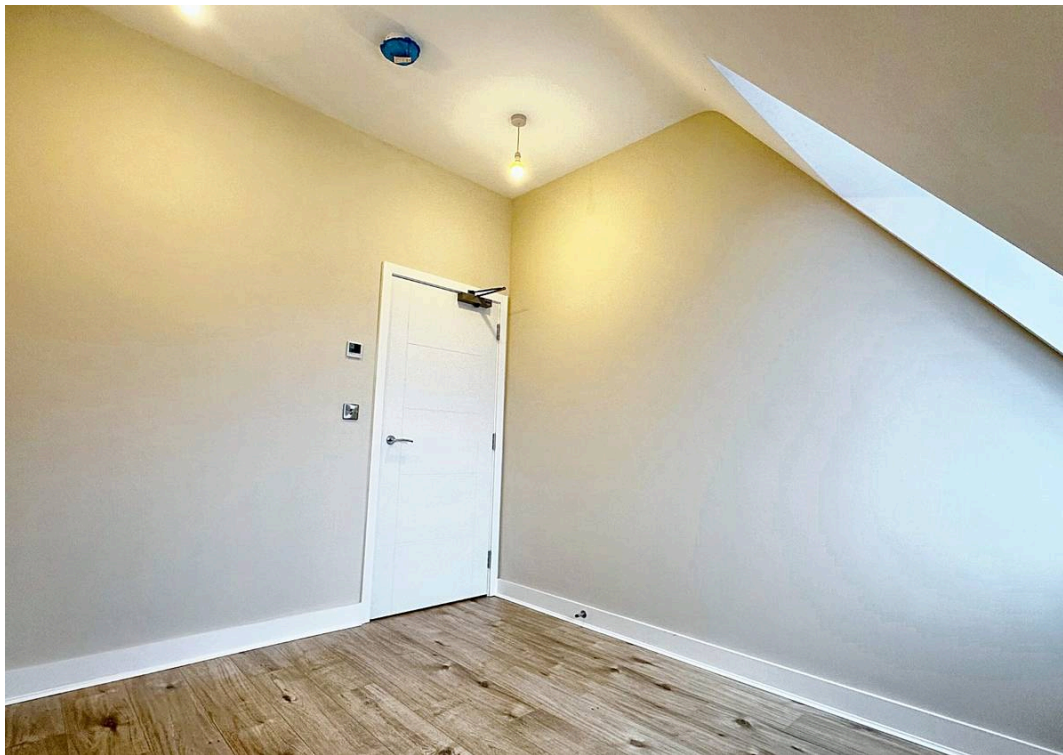
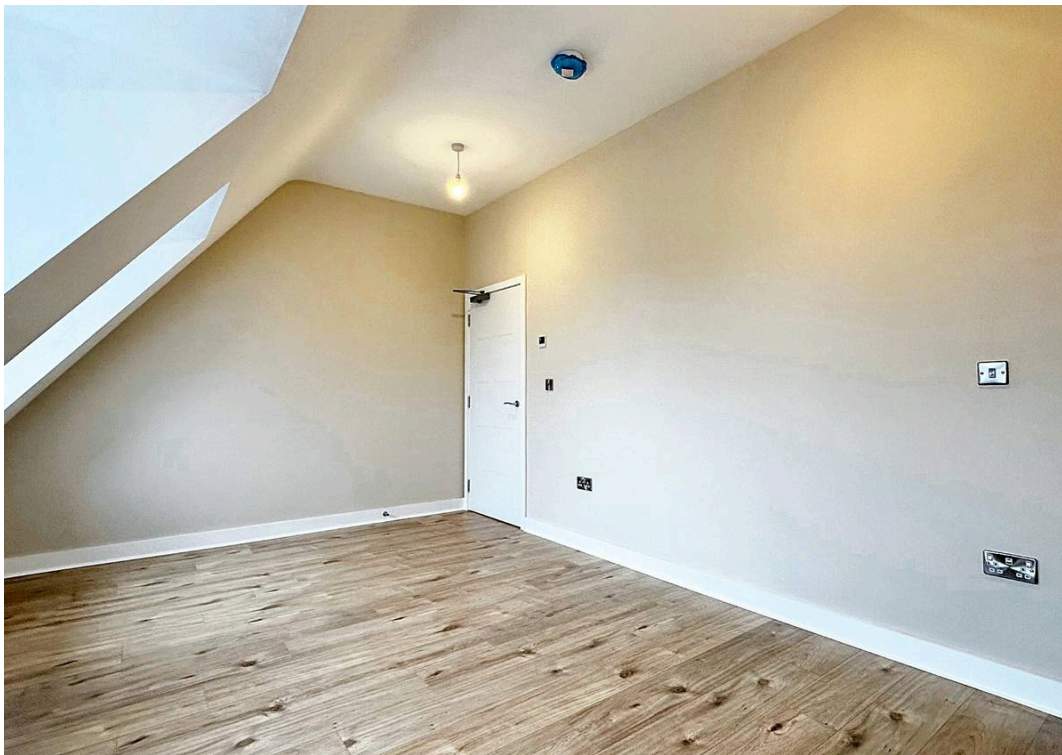
Brand New Luxury Apartment – Brand new 2-bed apartment with luxury features, modern design, and ideal city location. Underfloor heating, double glazing, private parking and long lease. EPC B. Don't miss out!"

Council Tax band: C

Tenure: Leasehold

- **Brand New Luxury Apartment**
- **2 Double Bedrooms**
- **Stunning Lounge / Diner / Kitchen**
- **Beautiful Bathroom**
- **Under Floor Gas Central Heating – UPVC Double Glazing**
- **Superb Location Just A Short Stroll To The Ever Popular High St**
- **999 Year Lease + Own A Share Of The Freehold**
- **Allocated Private Parking**
- **EPC B – No Chain**





© This floor plan is for information only and is not intended to be used as a basis for any legal proceedings. It is provided as a guide only and is not intended to be used as a basis for any legal proceedings. It is provided as a guide only and is not intended to be used as a basis for any legal proceedings.

Disclaimer:

We warrant that the information contained in this floor plan is true and correct to the best of our knowledge and belief at the time of preparation. We do not warrant that the information contained in this floor plan is true and correct to the best of our knowledge and belief at the time of preparation.

Apartment 09 Whittle House, 19 Warwick Street, CV5 6BQ

Kitchen/Dining/Living	4.07m x 7.66m	13'3" x 25'1"
Bed 1	4.77m x 3.47m	15'6" x 11'3"
Bed 2	2.77m x 3.47m	9'0" x 11'3"
Bathroom	2.00m x 2.35m	6'5" x 7'7"



Apartment 09 Sales Plan

211 Rev #	
Jeremy Construction Ltd	
15-35 Warwick Street, Coventry	
Apartment 11 Sales Plan	
150 of A3	June 2023
150 of A3	150 of A3
Construction	C5528