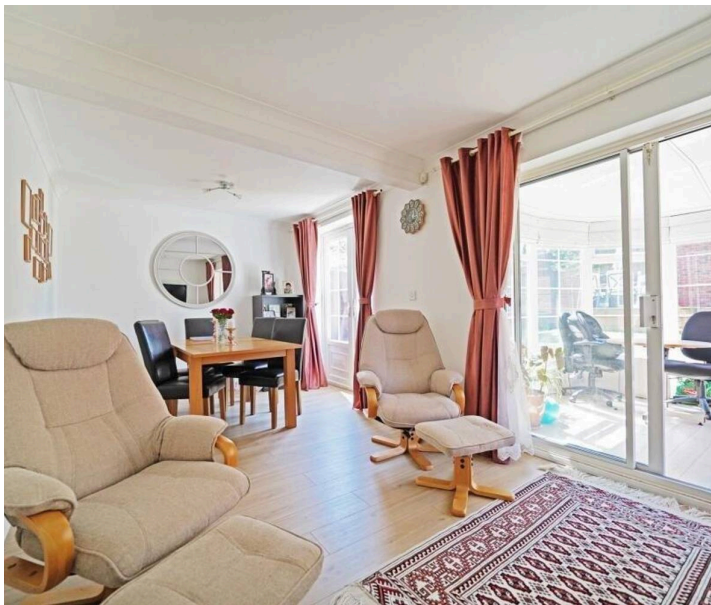




7 Grovefield Crescent, Balsall Common – CV7 7RE
£1,950 pcm



7 Grovefield Crescent

Balsall Common, Coventry

Modern 4-bed, 3-bath home in Balsall Common. Spacious living, beautiful garden, garage. Ideal for families or professionals. Light-filled open plan, modern kitchen, welcoming living room. Four bedrooms, neutral decor. Garage, decked seating, gas heating, double glazing. Nearby schools, amenities, green spaces, excellent transport links. A perfect family home in a tranquil village setting. Contact us to arrange a viewing.

Council Tax band: F

Tenure: Freehold

EPC Energy Efficiency Rating: C

EPC Environmental Impact Rating: C

- Spacious South Westerly garden
- Decked seating area
- Modern kitchen
- Breakfast bar
- Open plan living and dining
- French doors to garden
- Modern bathrooms with walk-in shower and bath-tub
- Fireplace in living room
- Off-road parking
- Integral garage



lettings@williamsandbinch.co.uk

02476 011400



Location

Grovefield Crescent, Balsall Common

Details

4 bedrooms

1 bathroom, 1 en-suite & 1 W/C



Disclaimer

Although every care has been taken, measurements are approximate & no responsibility is taken for error.

Plan is for illustrative purposes only.

