



BISHOPS WAY
NOS 1 - 17

1 Bishops Way

Buckden, St. Neots, PE19 5TZ

Guide price £550,000



1 Bishops Way

Buckden, St. Neots, PE19 5TZ

GUIDE PRICE £550,000 to £575,000

Located in the beautiful village of Buckden, is this four bedroom, detached family home with a garage and parking.

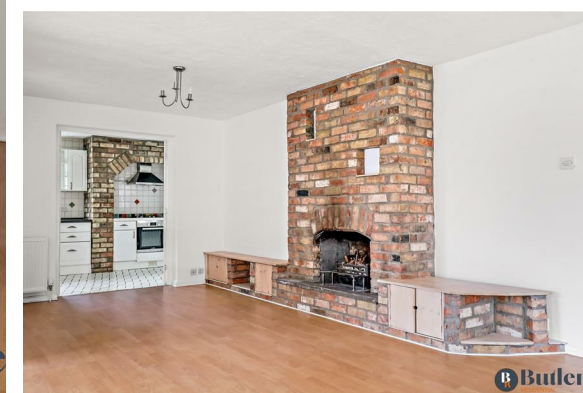
The property has been vastly extended over the years with an abundant amount of living space. Downstairs includes four reception rooms, a large kitchen diner, utility room and downstairs W/C.

The lounge has been extended to the side creating a large and welcoming space flooded with natural light. The brick built fireplace is a welcome addition, perfect for cosy evenings when the colder nights draw in. Off the lounge is a study which could also be a playroom, or snug for older children.

The kitchen is large in size with a brick feature surrounding the oven and hob, and has plenty of space for preparing and cooking family meals. Off the kitchen is a pantry and access to a large utility room. Through to the dining area which includes a log burner.

Upstairs are four bedrooms. Bedroom one has an en-suite with shower, plus a separate dressing room. Bedrooms two, three and four all have built in storage. A modern three piece bathroom completes the living space.

Outside is a wrap around garden with plenty of mature shrubs and trees, a greenhouse area, plus an additional three brick built sheds. There is also a circular concrete swimming pool, very much loved over the years by the





previous owners.

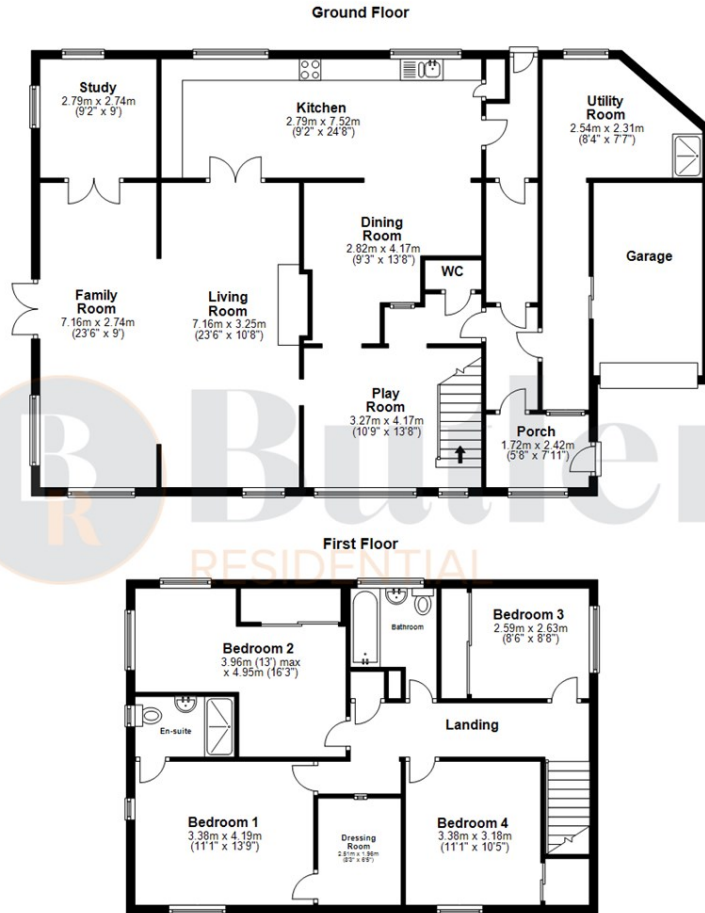
Access to the garage and utility room is via a separate hallway from the front.

A must see property to appreciate the scope and space this home has to offer (approx 2400 square foot)

Offered chain free.

Centrally located in the village, a stones throw away from the local Primary School and within quick walking distance to the local shops, library and pubs. For those in need to commute the A1 is within minutes as well as the A14 and nearby mainline train stations in Huntingdon and St Neots.

Floor Plan



Total area: approx. 227.0 sq. metres (2443.1 sq. feet)

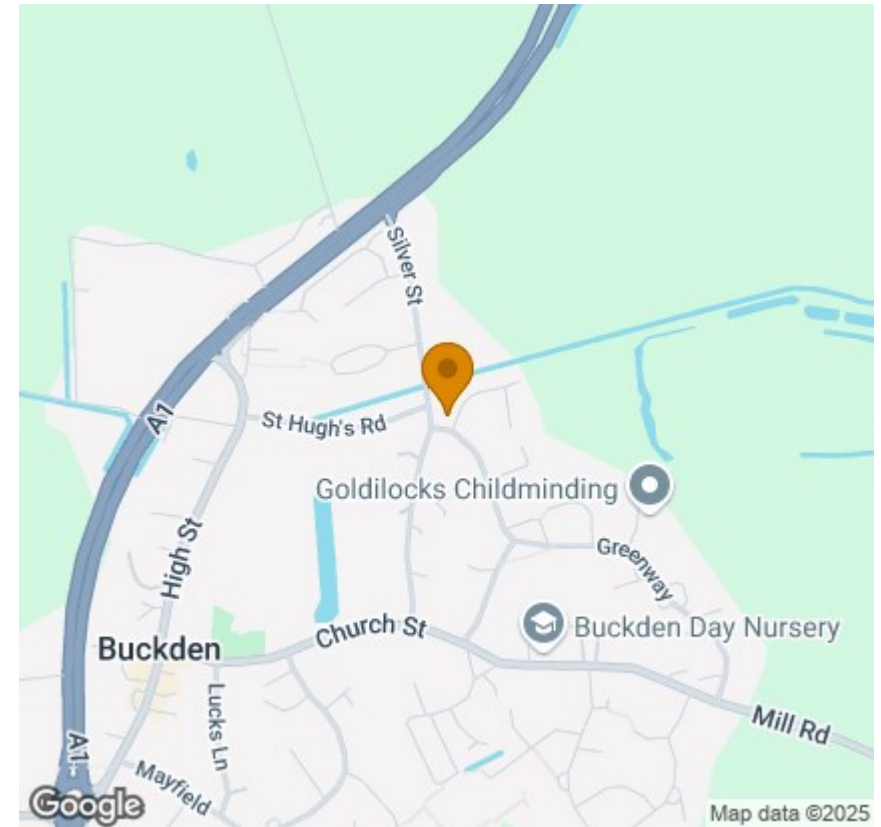
Whilst every attempt has been made to ensure the accuracy of the floor plan contained here, the measurements of doors, windows, rooms and any other items are approximate and no responsibility is taken for error or omission or representation. The floor plan is for illustrative purposes only and should be used as such by any prospective purchaser. Plan produced using PlanUp.

Viewing

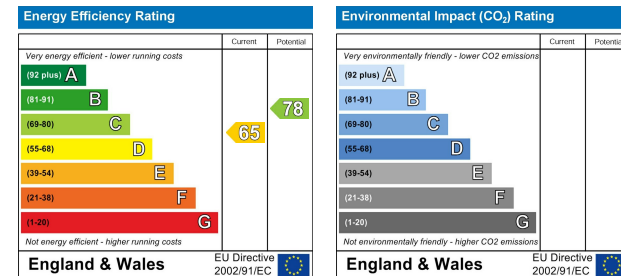
Please contact us on 01438 584400 if you wish to arrange a viewing appointment for this property or require further information.

These particulars, whilst believed to be accurate are set out as a general outline only for guidance and do not constitute any part of an offer or contract. Intending purchasers should not rely on them as statements of representation of fact, but must satisfy themselves by inspection or otherwise as to their accuracy. No person in this firm's employment has the authority to make or give any representation or warranty in respect of the property.

Area Map



Energy Efficiency Graph



Address: Suite 2, First Floor, Unit B, Balbir House Norton Green Road, Stevenage, SG1 2LP

Tel: 01438 584400

Email: hello@butlerresidential.co.uk



butlerresidential.co.uk