



3 Sele House North Road
Hertford, SG14 1LQ

£250,000



3 Sele House North Road

, Hertford, SG14 1LQ

Located in Hertford is this one bedroom, Grade II listed apartment with parking.

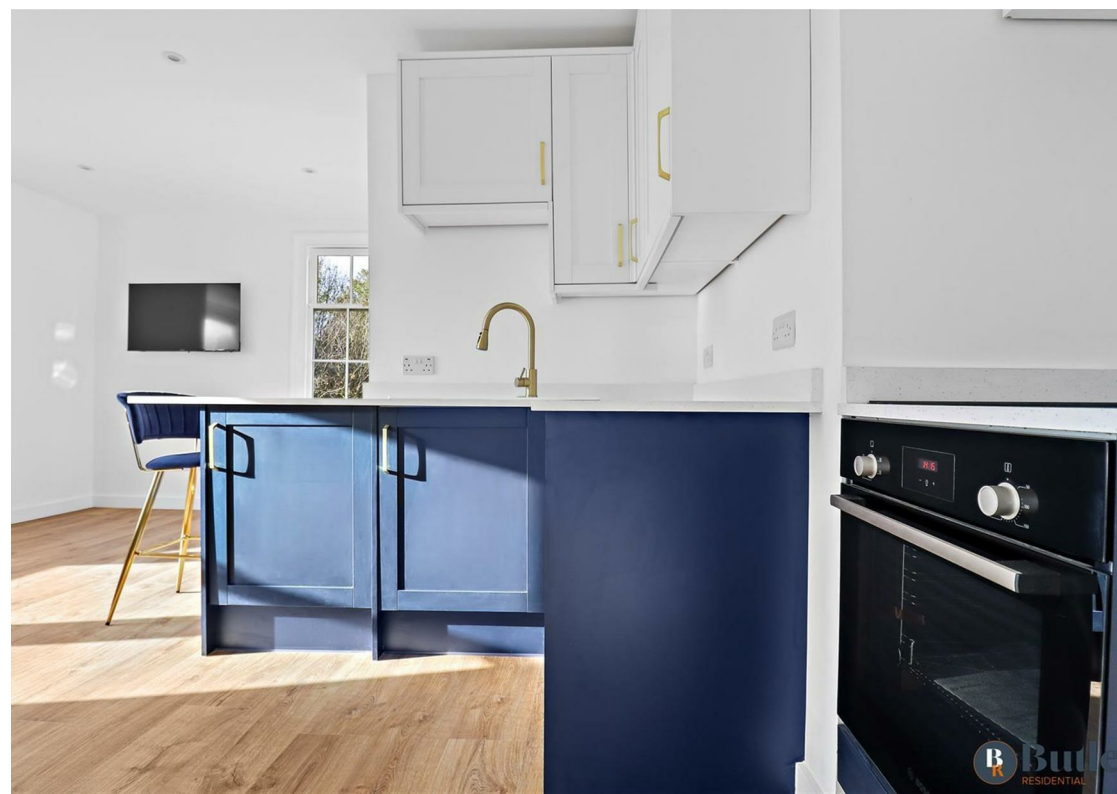
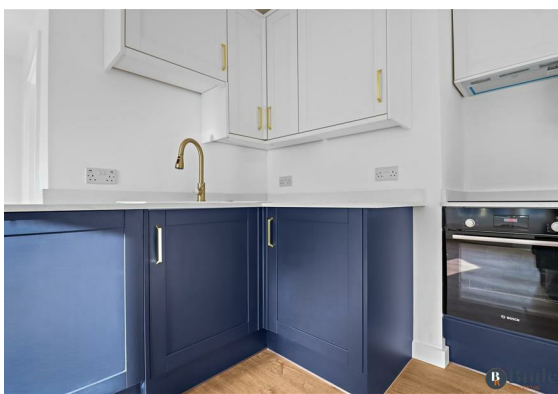
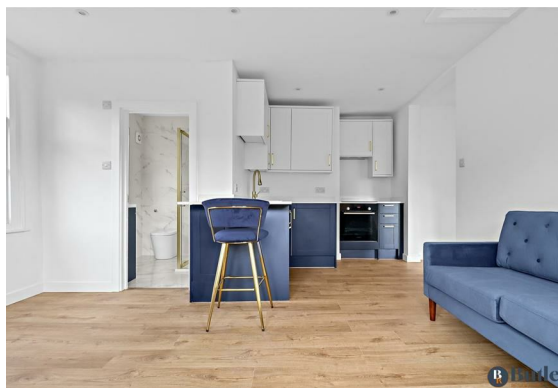
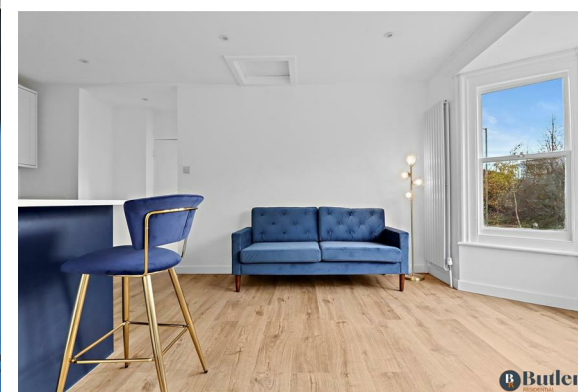
Sele House holds significant historical importance in Hertford and the UK, having originally been Sele Mill, the country's first-ever commercial paper mill.

Fully refurbished and modernised, this contemporary first-floor apartment is ready to move straight in.

Step inside to a bright and welcoming open-plan living area, with wood-effect flooring underfoot. Dual-aspect windows provide views to the front and the canopy, with a large bay window beautifully framing the living space. The kitchen boasts stylish two-tone white and navy cabinets with gold hardware, stone worktops with upstands, and a chic feature tap. Integrated appliances include a Bosch oven and induction hob, with an extractor fan above, and an under-counter fridge.

Through to the bedroom, you'll find another beautiful bay window and double mirrored wardrobes, offering excellent storage solutions. The three-piece bathroom is a luxurious retreat, featuring statement tiling, gold hardware, and a light-up vanity mirror. Under-sink storage keeps cosmetics and cleaning products neatly tucked away.

Across the hall from the front door is a separate storage room, with space and plumbing for a washing machine. Outside, access to the property is via secure remote-controlled gates, and the apartment comes with one parking





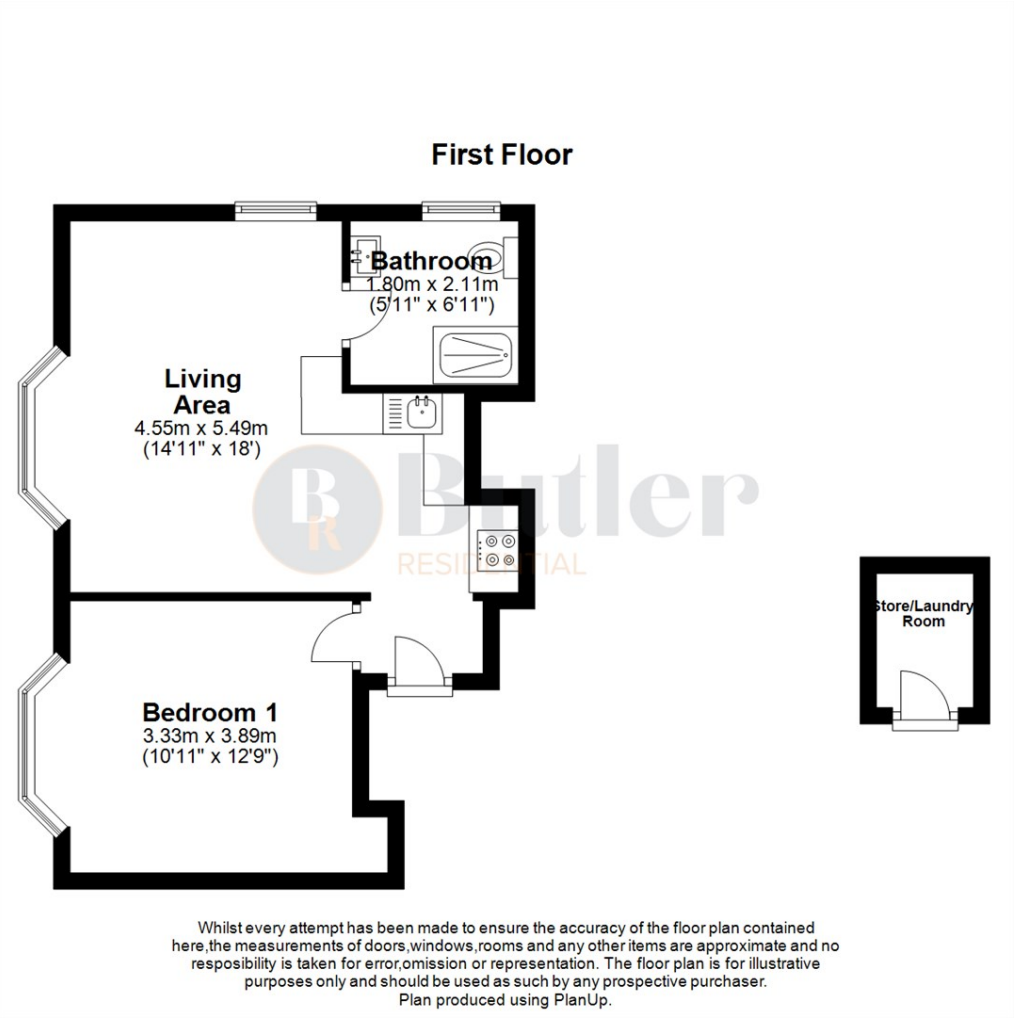
space.

The property is conveniently located a short walk from Hertford North railway station, offering journeys to Finsbury Park in under forty minutes. Hertford town centre is just a five to ten-minute walk away, with its array of independent shops, restaurants, bars, and pubs, plus a popular farmers' market featuring artisan and local traders on the second Saturday of each month.

A must-see property, ideal for a first-time buyer or someone looking to start or expand a rental portfolio.

Agent's Note

Floor Plan



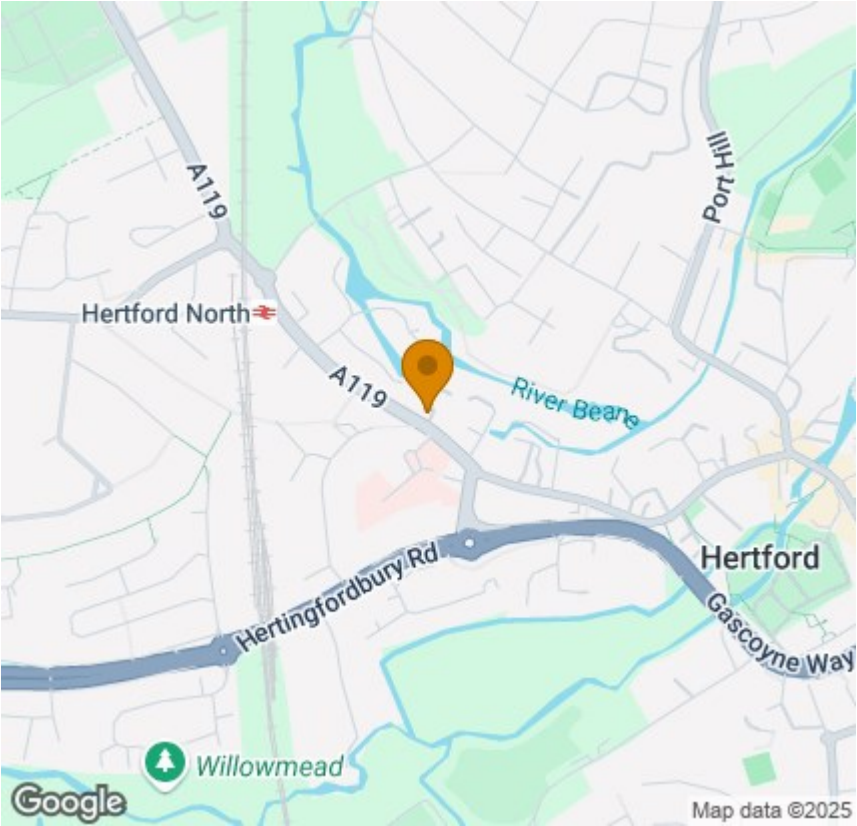
Viewing

Please contact us on 01438 584400 if you wish to arrange a viewing appointment for this property or require further information.

These particulars, whilst believed to be accurate are set out as a general outline only for guidance and do not constitute any part of an offer or contract. Intending purchasers should not rely on them as statements of representation of fact, but must satisfy themselves by inspection or otherwise as to their accuracy. No person in this firms employment has the authority to make or give any representation or warranty in respect of the property.

Address: Suite 2, First Floor, Unit B, Balbir House Norton Green Road, Stevenage, SG1 2LP
Tel: 01438 584400
Email: hello@butlerresidential.co.uk

Area Map



Energy Efficiency Graph

