



43 Church Field, Ware, SG12 0EP

Guide price £410,000

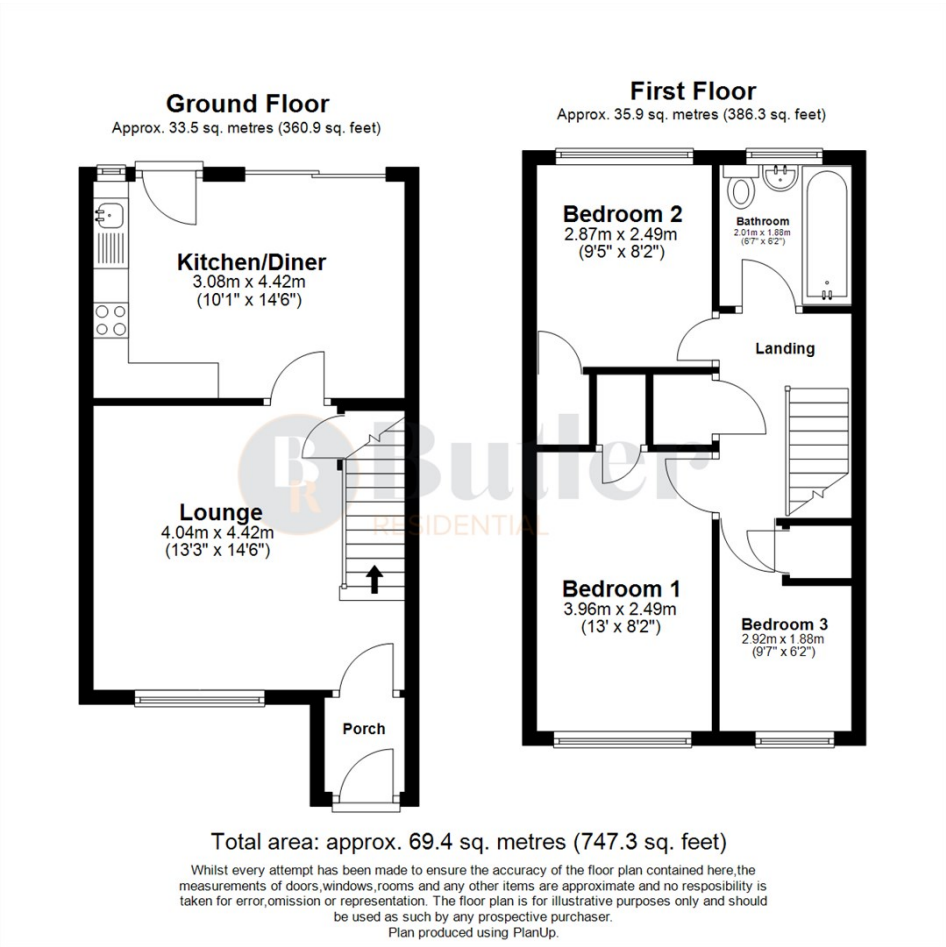
Guide price £410,000 - £425,000.

Located in Ware is this chain free, three bedroom terraced home with allocated parking.

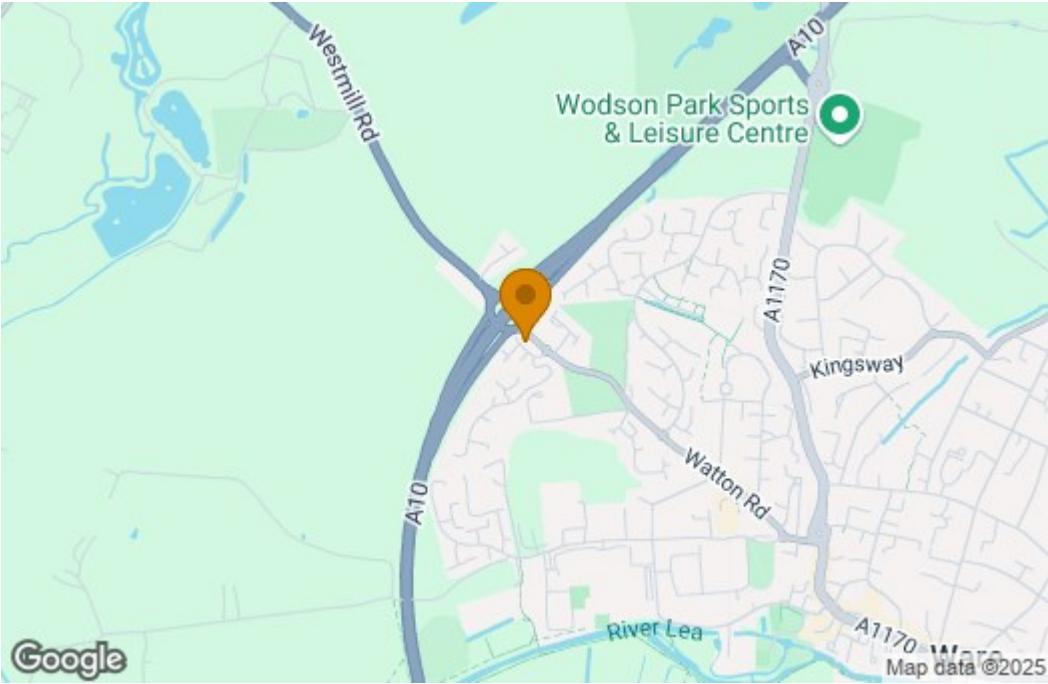
Step inside to an entrance porch with space to hang coats and bags. The lounge is bright and airy, offering views to the front and a useful understairs storage cupboard. At the heart of the home is the kitchen/ dining room, an ideal space for entertaining family and friends, with sliding patio doors leading out to the garden, bringing the outside in.

Upstairs, there are three bedrooms, all with built-in storage cupboards, along with a three-piece family bathroom.

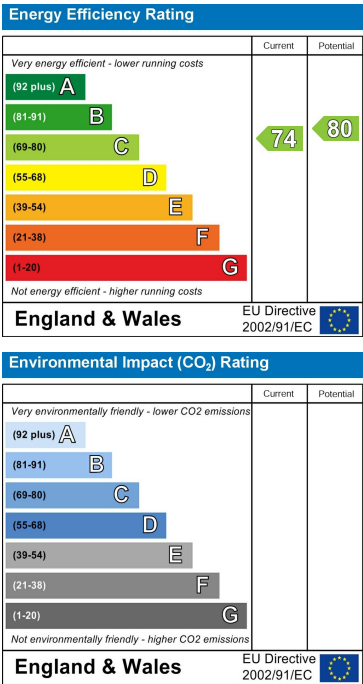
Floor Plan



Area Map



Energy Efficiency Graph



These particulars, whilst believed to be accurate are set out as a general outline only for guidance and do not constitute any part of an offer or contract. Intending purchasers should not rely on them as statements of representation of fact, but must satisfy themselves by inspection or otherwise as to their accuracy. No person in this firms employment has the authority to make or give any representation or warranty in respect of the property.