



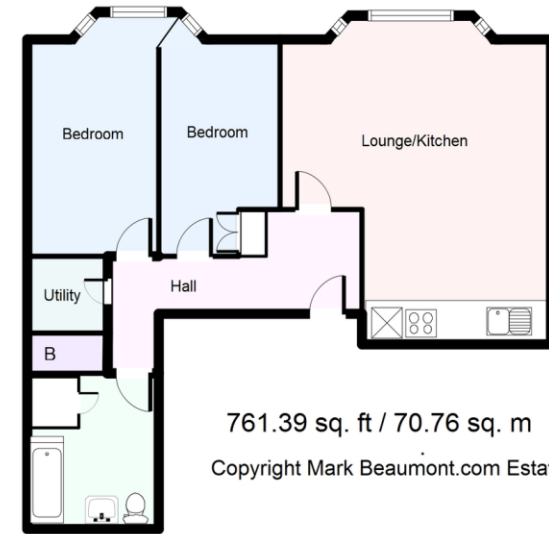
Lewisham High Street, Lewisham, London SE13 6JZ

£1,200 pcm

- TWO BEDROOMS
- 71 m2 A GENEROUS SIZE
- BIG OPEN PLAN LOUNGE
- NEW FITTED KITCHEN

Beaumont Lettings.com: Large, two bedroom first floor flat. The flat has been refurbished throughout and is ready for its first tenants. Big Hallway. Large lounge opening onto a new 'American' style kitchen. One very good sized bedroom and a decent second bedroom. Unusually the flat has a separate utility room. There is also a large bathroom. Newly decorated with wooden flooring.

Centrally located in Lewisham High Street, but also around the corner from Ladywell. Superb transport being near two great stations and the DLR. Available now. #AskBeaumont



761.39 sq. ft / 70.76 sq. m
 Copyright Mark Beaumont.com Estate Agents



| Energy Efficiency Rating | | |
|----------------------------------------------------|-------------------------|-----------|
| | Current | Potential |
| <i>Very energy efficient - lower running costs</i> | | |
| (92-100) A | | |
| (81-91) B | | |
| (69-80) C | | |
| (55-68) D | 62 | 70 |
| (39-54) E | | |
| (21-38) F | | |
| (1-20) G | | |
| <i>Not energy efficient - higher running costs</i> | | |
| England & Wales | EU Directive 2002/91/EC | |

South London Branch, 197
 Lewisham High Street, London,
 SE13 6AA

www.markbeaumont.com
lettings@markbeaumont.com
 020 8852 5000

Agents Note: Whilst every care has been taken to prepare these particulars, they are for guidance purposes only. All measurements are approximate and for general guidance purposes only and whilst every care has been taken to ensure their accuracy, they should not be relied upon and we advise to recheck the measurements.