





Property Summary

A ground floor, two-bedroom garden flat, with direct access to the garden. This flat has a share of freehold.

The layout of the flat is versatile and can be used as two reception rooms and one bedroom. There is a modern fitted kitchen and a modern shower room. Located in a quiet residential road, between five main stations and under a mile to five great parks.

For sale with no onward chain. #AskBeaumont

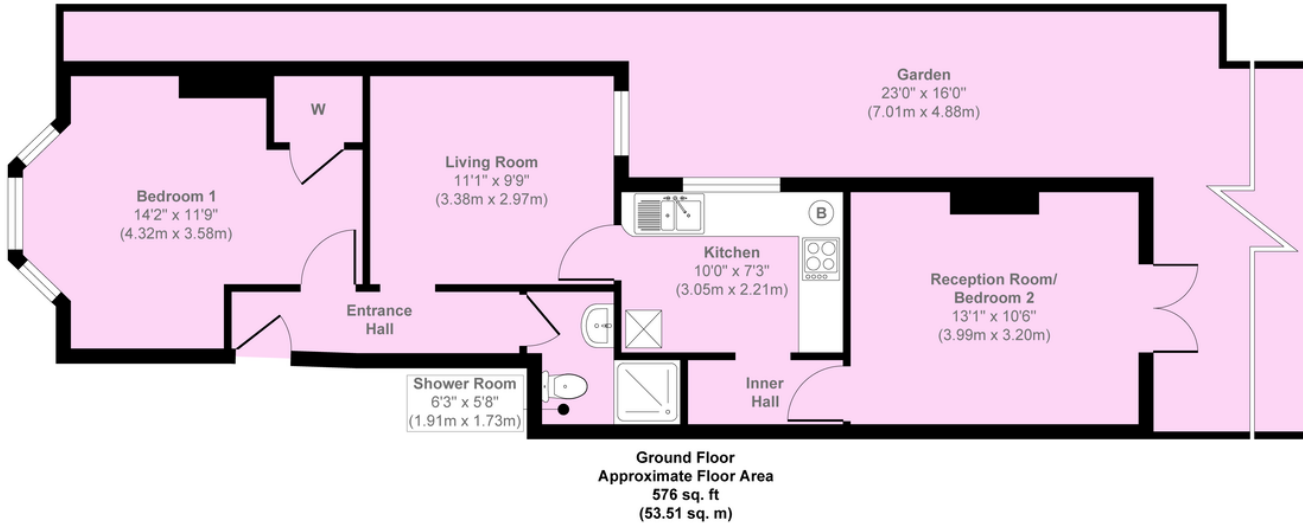
Property Features

- Garden Flat
- Direct Garden Access
- Share of freehold
- Two bedrooms or
- Two reception rooms
- Private section of garden
- Quiet residential street
- Modern kitchen and
- Shower room
- Good for many stations





Fordyce Road



Approx. Gross Internal Floor Area 576 sq. ft / 53.51 sq. m
Illustration for identification purposes only, measurements are approximate, not to scale.

Copyright © markbeaumont.com
Produced by Elements Property

Distances are taken from googlemaps.co.uk. They are approximate and are to be used as rough guide only.

TRANSPORT

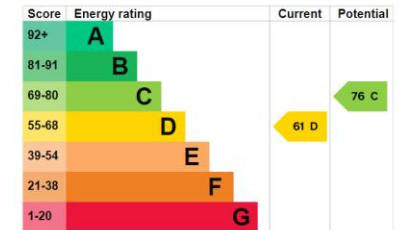
- Hither Green Station 0.6 Mile
- Ladywell Station 0.6 Mile
- Lewisham Station & DLR 1.1 Mile
- Catford & Catford Bridge Station 1.0 Mile

PARKS

- Lewisham Park 0.2 Mile
- Mountsfield Park 0.3 Mile
- Manor Park 0.5 Mile
- Manor House Gardens 0.8 Mile
- Ladywell Fields 0.5 Mile

WALKSCORE.COM 85/100

"Very Walkable"
Most errands can be accomplished on foot."



AGENTS NOTE

Lewisham council tax band 'B' currently £1413pa.
We are not aware of any service or ground rent charges.