



**Mark Beaumont**  
markbeaumont.com

MELROSE CLOSE, LONDON, SE12 0AL  
ASKING PRICE OF £425,000





## DESCRIPTION

An opportunity to purchase a three bedroom terrace house which is situated 0.7 miles from Lee Main Line Station. The house needs some TLC and this is reflected in the price. The accommodation offers entrance porch, hallway, lounge, kitchen/diner and a ground floor WC. To the first floor there are three bedrooms and a family bathroom. The property also benefits from central heating, rear garden and off street parking. Melrose Close is well located for schools, bus routes and Burnt Ash Pond - local nature reserve. The property is also offered CHAIN FREE. FREEHOLD. #AskBeaumont  
Whatsapp us: 07832 685 596

## ENTRANCE HALL

## KITCHEN

11' 7" x 11' 4" (3.53m x 3.45m)

## RECEPTION ROOM

14' 3" x 11' 4" (4.34m x 3.45m)

## WC

## HALLWAY

## BEDROOM

11' 11" x 8' 9" (3.63m x 2.67m)

## BEDROOM

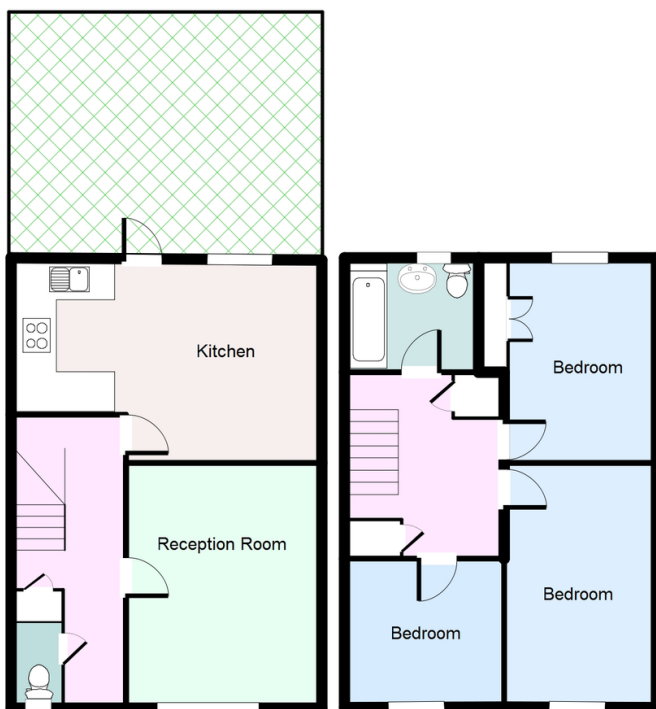
14' 1" x 8' 9" (4.29m x 2.67m)

## BEDROOM

9' 1" x 8' 6" (2.77m x 2.59m)

## BATHROOM

## GARDEN



938 sq. ft

(c) Mark Beaumont

