

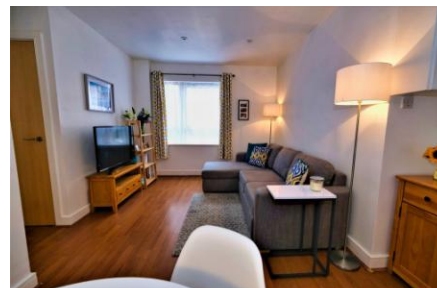


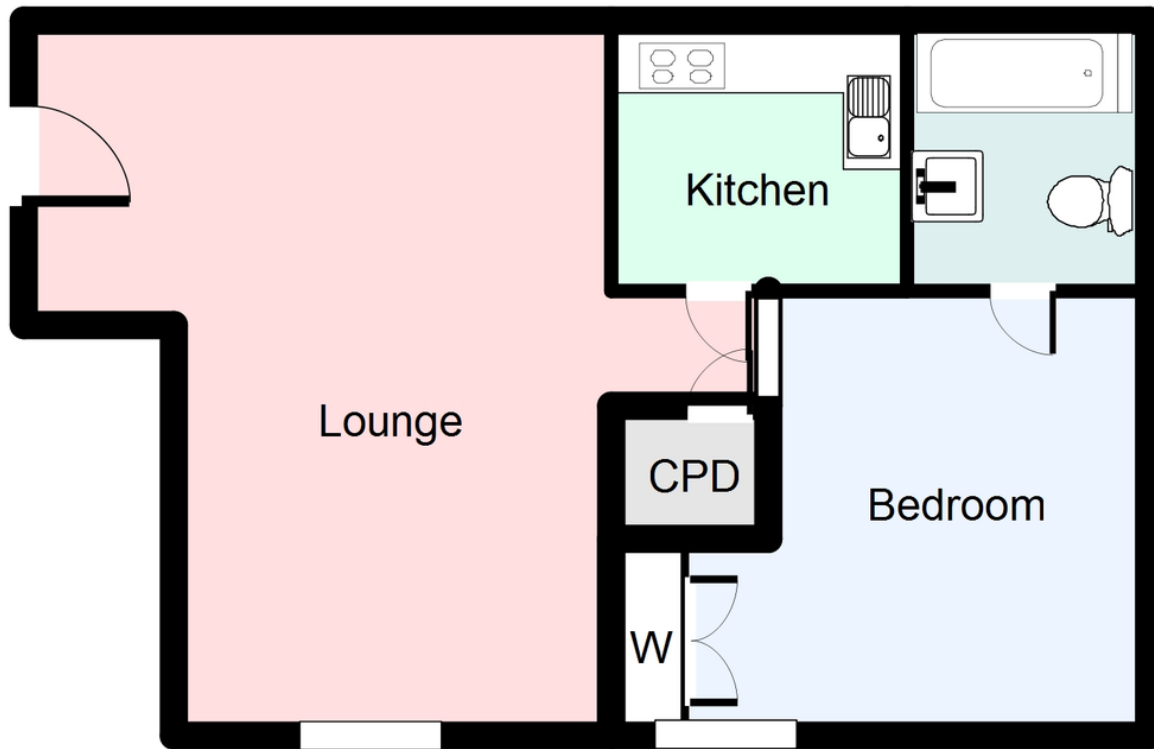
Catalpa Court, Hither Green,
London, SE13 6TG.

Offers in excess £250,000

STAMP DUTY EXEMPT.

Mark Beaumont Estate Agents are pleased to offer for sale this well-presented ground floor flat which forms part of the modern Meridian South development. The complex benefits from on-site CCTV, security and a caretaker, communal grounds, a Tesco Express and Anytime Fitness gym. Neighbours are typically young couples, professionals and young families.





Copyright Mark Beaumont Estate Agents
 APPROX GROSS INTERNAL FLOOR AREA: 387 sq. ft

Energy Efficiency Rating		Current	Potential
Very energy efficient - lower running costs			
(92 plus)	A		
(81-91)	B		
(69-80)	C		
(55-68)	D	68	80
(39-54)	E		
(21-38)	F		
(1-20)	G		
Not energy efficient - higher running costs			

South London Branch
 197 Lewisham High
 Street
 London
 SE13 6AA

www.markbeaumont.com
 sales@markbeaumont.com
 020 8852 5000

Agents Note: Whilst every care has been taken to prepare these particulars, they are for guidance purposes only. All measurements are approximate are for general guidance purposes only and whilst every care has been taken to ensure their accuracy, they should not be relied upon and potential buyers are advised to recheck the measurements