





### Property Summary

Lovely three-bedroom family home for sale. This property is located in a residential cul de sac and is chain free

Close by you will find excellent transport links including Grove Park station (approx 14 minutes to London Bridge) and bus routes keeping you well connected with both Bromley and Eltham.

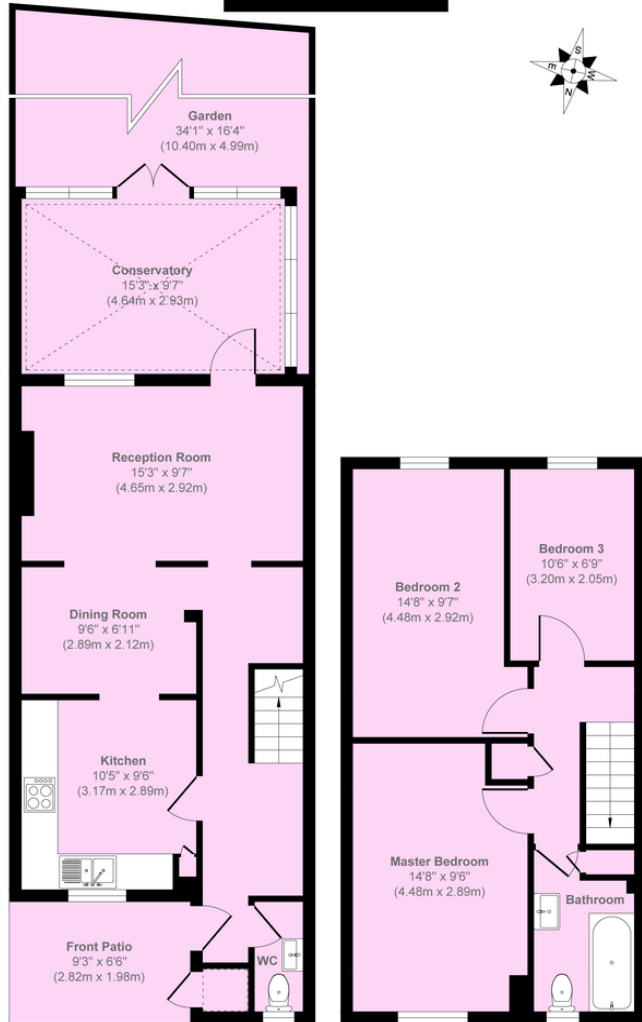
### Property Features

- Chain Free
- Conservatory
- Private Garden
- Freehold
- 3 Bedroom House
- Cul De Sac





Duddington Close, London, SE9 4JD



Ground Floor  
 Approximate Floor Area  
 457 sq. ft  
 (42.48 sq. m)

First Floor  
 Approximate Floor Area  
 453 sq. ft  
 (42.12 sq. m)

**Approx. Gross Internal Floor Area 910 sq. ft / 84.61 sq. m**

Illustration for identification purposes only, measurements are approximate, not to scale.  
 Copyright © markbeaumont.com  
 Produced by Elements Property

Score	Energy rating	Current	Potential
92+	A		
81-91	B		
69-80	C		80   C
55-68	D	60   D	
39-54	E		
21-38	F		
1-20	G		