





Property Summary

Built in the 1970's as a four bedroom house and arranged over three floors is this Freehold town house. The location is one of the biggest draws to this house, it is in a quiet, tree lined cul-de-sac. Literally just 0.5 Mile from Hither Green station and 0.6 to Lewisham and Ladywell Stations/Centres. This is a centrally located house, but in a much quieter road than you would expect for London.

The house is currently arranged as a three bedroom house. The present owners have opened up the fourth bedroom to create an extra reception area, which is currently a toy/play room. Downstairs there is also a cloakroom and a kitchen which is large enough to eat in.

On the first floor there is the living room and a double bedroom. On the top floor there is another double bedroom and a single bedroom together with the modern bathroom. There are gardens to the front and rear and the house also has an allocated off road, parking space. The house is well presented and ready to move into.

Property Features

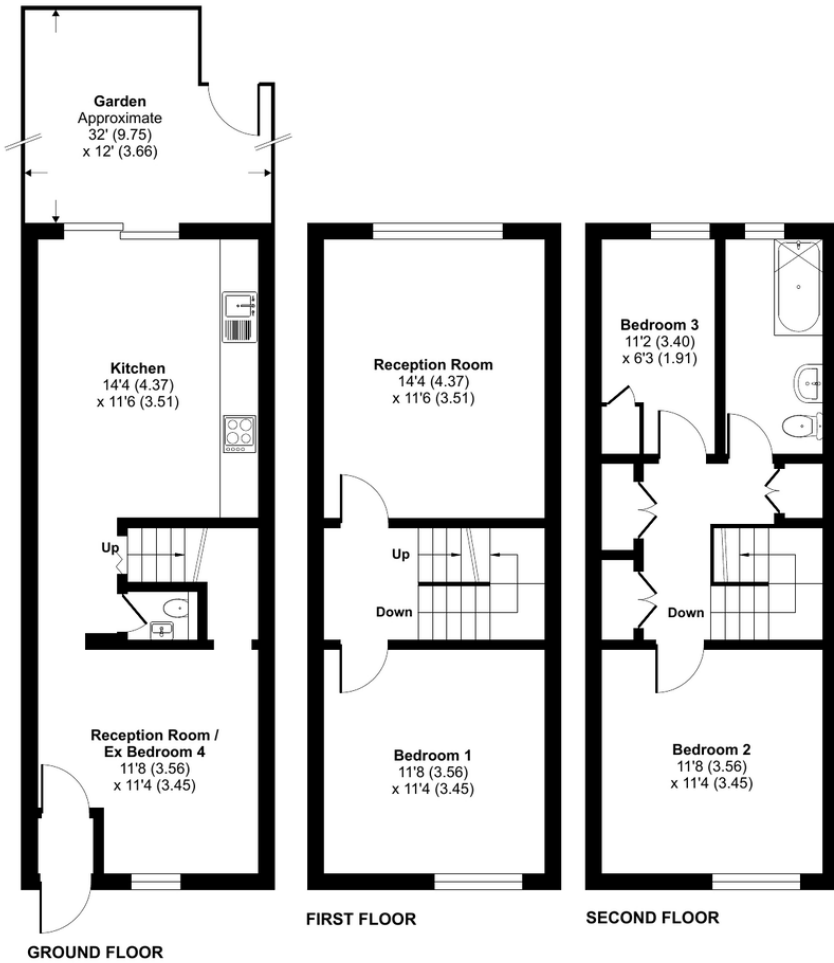
- Four bedrooms
- Modern Kitchen with room to eat in
- Modern Bathroom
- Downstairs Cloakroom
- Courtyard garden
- Two bedrooms are doubles
- Cul-de-sac location
- Tree Lined gorgeous secret road
- Allocated Parking
- Freehold house





College Park Close, London, SE13

Approximate Area = 1140 sq ft / 106 sq m
For identification only - Not to scale



Score	Energy rating	Current	Potential
92+	A		
81-91	B		89 B
69-80	C	72 C	
55-68	D		
39-54	E		
21-38	F		
1-20	G		

Floor plan produced in accordance with RICS Property Measurement Standards incorporating International Property Measurement Standards (IPMS2 Residential). © nlc|ecom 2023. Produced for Mark Beaumont. REF: 974108

South London Branch, 197 Lewisham High Street, London, SE13 6AA

www.markbeaumont.com
sales@markbeaumont.com
020 8852 5000

Agents Note: Whilst every care has been taken to prepare these particulars, they are for guidance purposes only. All measurements are approximate and for general guidance purposes only and whilst every care has been taken to ensure their accuracy, they should not be relied upon and potential buyers are advised to recheck the measurements.