





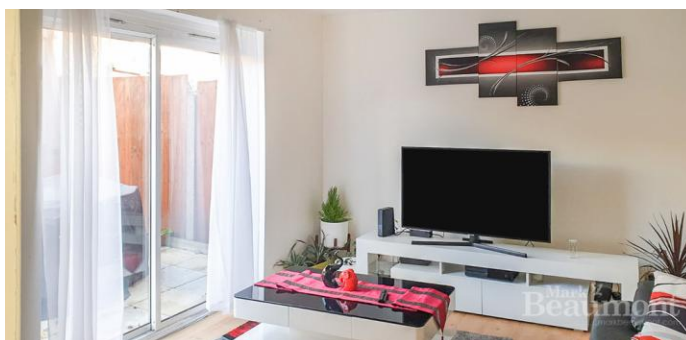


### Property Summary

This freehold house is located between the parks of Manor House Gardens and Manor Park, on the Hither Green side of town. Hither Green station is just 0.5 mile. It is a generous 958m<sup>2</sup> or 89m<sup>2</sup>. This house represents great value for money to move into a very sought after wider area.

### Property Features

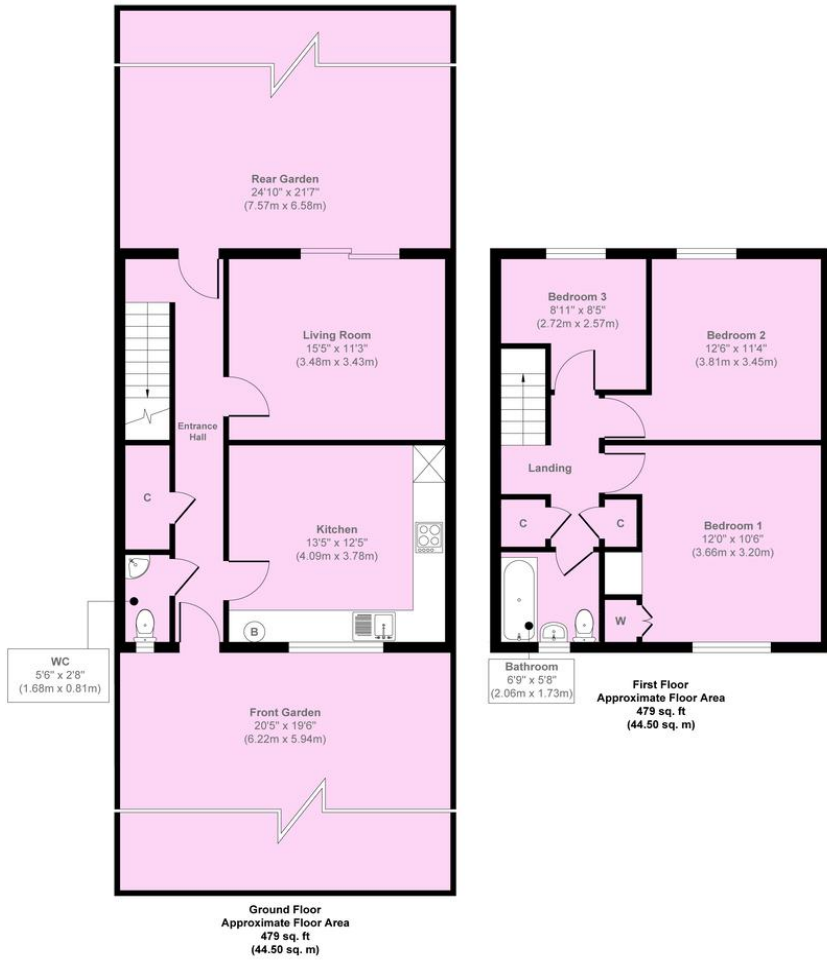
- MANOR HOUSE GARDENS AREA
- HITHER GREEN 0.5 MILE
- BLACKHEATH 0.9 MILE
- FREEHOLD HOUSE
- 3 BEDROOMS
- PRIVATE FRONT & BACK GARDENS
- TWO RECEPTION ROOMS
- DOWNSTAIRS CLOAKROOM
- 958 FT<sup>2</sup> (89M) OF ACCOMODATION
- NO CHAIN







Cordwell Road



Approx. Gross Internal Floor Area 958 sq. ft / 89.00 sq. m

Illustration for identification purposes only, measurements are approximate, not to scale.  
Copyright © markbeaumont.com  
Produced by Elements Property

Score	Energy rating	Current	Potential
92+	A		
81-91	B		
69-80	C	74   C	86   B
55-68	D		
39-54	E		
21-38	F		
1-20	G		