



- 2 Large Bedrooms
- Open Plan Kitchen
- Big living room
- Over two floors

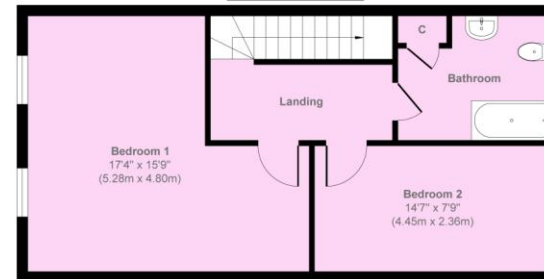
Lewisham High Street, London, SE13 6JZ

£1,600 pcm

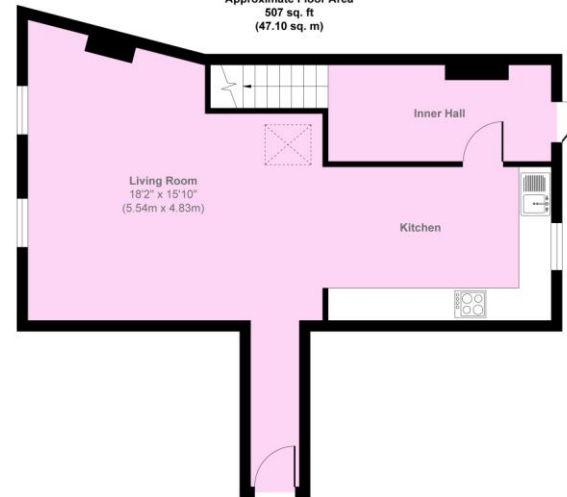
The property has been decorated. A large, 2 bedroom with a separate kitchen. Centrally located in Lewisham High Street, but also around the corner from Ladywell. Superb transport being near two great stations and the DLR. Available now.



Lewisham high street 324



Second Floor
Approximate Floor Area
507 sq. ft
(47.10 sq. m)



First Floor
Approximate Floor Area
553 sq. ft
(51.37 sq. m)

Approx. Gross Internal Floor Area 1060 sq. ft / 98.47 sq. m

Illustration for identification purposes only, measurements are approximate, not to scale.
Copyright © markbeaumont.com
Produced by Elements Property

Score	Energy rating	Current	Potential
92+	A		
81-91	B		
69-80	C		77 C
55-68	D	60 D	
39-54	E		
21-38	F		
1-20	G		

197 South London Branch,
Lewisham High Street, London,
SE13 6AA

www.markbeaumont.com
lettings@markbeaumont.com
020 8852 5000

Agents Note: Whilst every care has been taken to prepare these particulars, they are for guidance purposes only. All measurements are approximate and are for general guidance purposes only and whilst every care has been taken to ensure their accuracy, they should not be relied upon and we advise to recheck the measurements.