



Flat 4 Adam Morris Way  
Coalville, LE67 3AU

Offers in excess of £125,000









## Brief Description

In the heart of Coalville, this WELL-PRESENTED first-floor apartment on Adam Morris Way offers a delightful living experience. Available with NO UPWARD CHAIN, this flat is ready for you to move in and make it your own.

The property boasts two SPACIOUS bedrooms including a master suite complete with an ensuite shower room and a family bathroom, making it an ideal choice for couples or small families. The generous living area is perfect for relaxation and entertaining, complemented by a separate study area.

Upon entering the building, you are greeted by a SECURE communal entrance equipped with an intercom system. Stairs rise to the first floor landing, leading to the apartment with its welcoming hallway adorned with CONTEMPORARY laminate flooring. The GENEROUS living area, bathed in natural light from two windows, features STYLISH wall panelling and seamlessly connects to a dedicated study area, perfect for those who work from home or require additional space.

The kitchen is well-appointed with a range of wall and base units, complemented by a MARBLE-STYLE worktop. It includes an integrated oven, grill, and hob, along with plumbing for a washing machine and space for fridge freezer, ensuring all your culinary needs are met.

The master bedroom is a standout feature, offering AMPLE SPACE and a modern en-suite shower room, complete with tiled finish and ceiling spotlights. The second bedroom is also a comfortable double, providing flexibility for guests or family. The family bathroom is TASTEFULLY designed with a three-piece suite, including a bath, WC, and hand basin, featuring partly tiled walls for a clean and MODERN FINISH.

Externally, the well-maintained COMMUNAL GARDENS provide a pleasant outdoor space, laid to lawn with attractive planted borders. Additionally, the property includes one allocated PARKING space, ensuring convenient off-road parking.

This leasehold apartment combines modern living with a prime location, making it a FANTASTIC OPPORTUNITY.







## ON THE GROUND FLOOR

Communal Entrance

## ON THE FIRST FLOOR

Entrance Hall

Living Room

11'4" x 14'6" (3.45m x 4.42m)

Study Area

6'8" x 6'9" (2.03m x 2.06m)

Kitchen

10'0" x 13'9" (3.05m x 4.19m)



Bedroom 1

12'4" x 14'9" (3.76m x 4.50m)

En Suite Shower Room

Bedroom 2

8'0" x 10'0" (2.44m x 3.05m)

Family Bathroom

5'5" x 6'6" (1.65m x 1.98m)



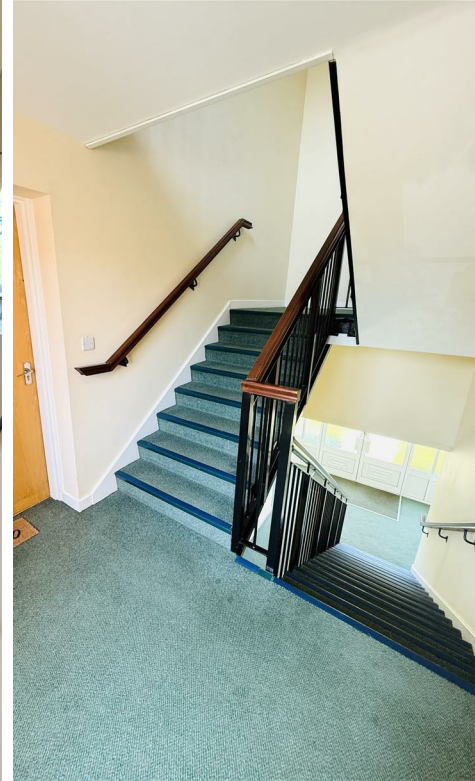
## ON THE OUTSIDE

Communal Gardens

Allocated Off-Road Parking

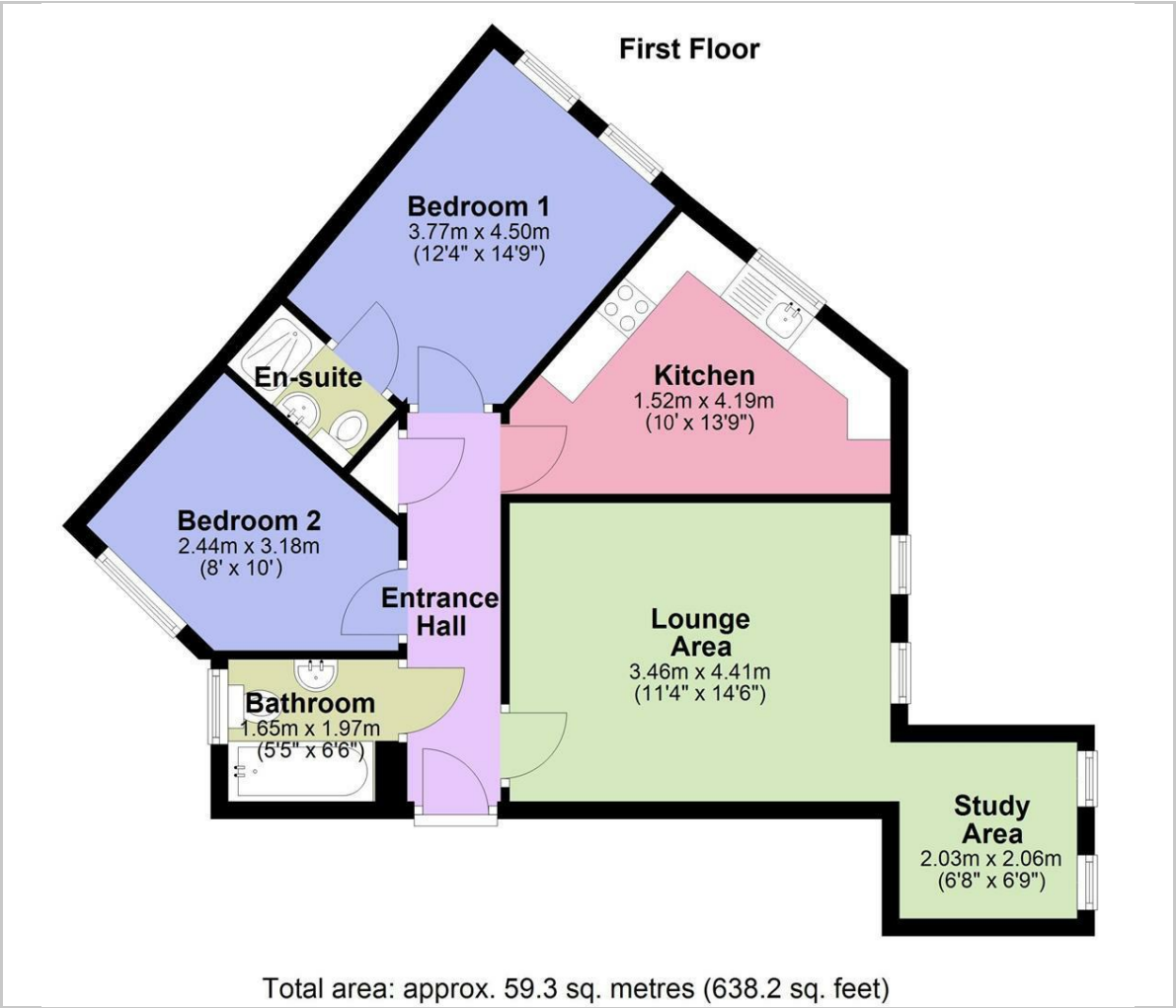








Floor Plan



Viewing

Please contact our Maynard Estates Office on 01530 682886 if you wish to arrange a viewing appointment for this property or require further information.

These particulars, whilst believed to be accurate are set out as a general outline only for guidance and do not constitute any part of an offer or contract. Intending purchasers should not rely on them as statements of representation of fact, but must satisfy themselves by inspection or otherwise as to their accuracy. No person in this firms employment has the authority to make or give any representation or warranty in respect of the property.

2-4 North Street, Whitwick, Coalville, Leicestershire, LE67 5HA  
Tel: 01530 682886 Email: sales@maynardestates.co.uk maynardestates.co.uk

Area Map



Energy Efficiency Graph

