



103 Central Road, Coalville, LE67 2FL

£800 Per month

This property is conveniently located on the outskirts of Coalville, providing easy access to local amenities and transport links. On Central Road in the popular area of Hugglescote, this delightful two-bedroom semi-detached house presents an EXCELLENT OPPORTUNITY for tenants seeking a long term let.

The home is WELL-PRESENTED THROUGHOUT, yet it also offers potential for further enhancements to suit your personal taste. Upon entering, you are greeted by a lovely open-plan living room and dining area. The living room is situated to the left, while the dining area, featuring FRENCH DOORS that lead to the rear garden, is to the right. The dining space boasts wood-effect vinyl flooring, creating a warm and inviting atmosphere.

The kitchen, accessible from the dining area, is equipped with MODERN base units, an integrated oven and grill, and ample space for a fridge freezer and washing machine. The metro tile splashback adds a contemporary touch, while the wood-effect vinyl flooring continues the theme of practicality and style. Adjacent to the kitchen is the family bathroom, which features a three-piece white suite, ATTRACTIVE tile-effect flooring, and built-in storage cupboards for added convenience.

Upstairs, you will find TWO GENEROUSLY SIZED DOUBLE BEDROOMS. The master bedroom benefits from built-in wardrobes and a matching chest of drawers, providing ample storage space.

ON THE GROUND FLOOR

Entrance

Living Room 11'0" x 12'3" (3.35m x 3.73m)



Dining Room 10'2" x 12'3" (3.10m x 3.73m)



Kitchen



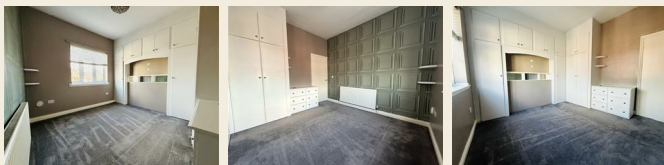
Family Bathroom



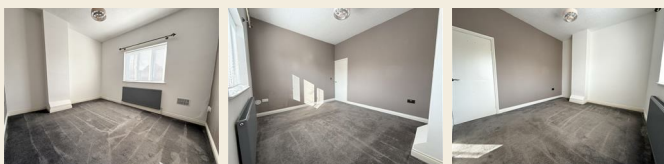
ON THE FIRST FLOOR

Landing

Bedroom 1 11'1" x 12'4" (3.38m x 3.76m)



Bedroom 2 10'4" x 12'3" (3.15m x 3.73m)



ON THE OUTSIDE



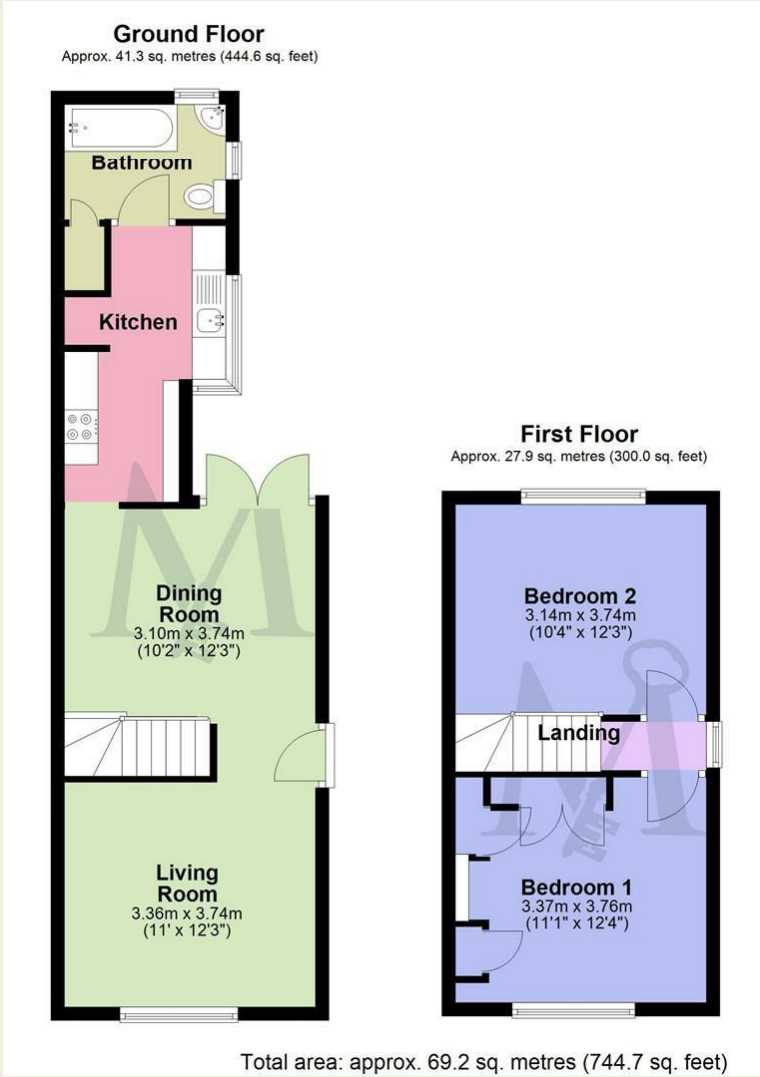
Rear Garden



Off-Road Parking



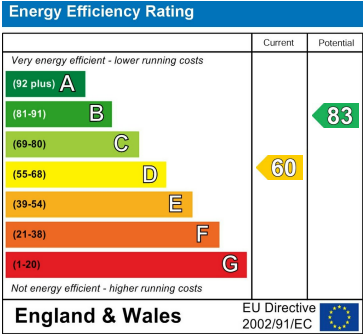
Floor Plan



Area Map



Energy Efficiency Graph



These particulars, whilst believed to be accurate are set out as a general outline only for guidance and do not constitute any part of an offer or contract. Intending purchasers should not rely on them as statements of representation of fact, but must satisfy themselves by inspection or otherwise as to their accuracy. No person in this firms employment has the authority to make or give any representation or warranty in respect of the property.