



# Town Lane, Bebington

£260,000 Offers Over



**LESLEY HOOKS**  
ESTATE AGENTS





This beautifully presented semi-detached home is ready to move straight into, offering stylish and comfortable living throughout. Finished with oak timber doors, uPVC double glazing and combi gas central heating, the property is designed with both charm and convenience in mind. The welcoming hallway leads into a bright lounge with a lovely bay window, while the rear of the home opens into a fantastic open-plan space, combining the dining area, a modern fitted kitchen and a light-filled conservatory. The kitchen is a real highlight, complete with integrated washing machine, fridge freezer, Belfast-style sink and a hot water tap. Upstairs, there are three well-proportioned bedrooms and a superb family bathroom featuring a three-piece suite with an elegant roll-top bath with claw feet. Outside, the rear garden provides a delightful retreat, with a patio area perfect for relaxing or entertaining. Ideally located, the home is within walking distance of primary, secondary and grammar schools, with Teehey Lane's shops and amenities just around the corner. This stunning home is perfect for those looking for nothing to do other than simply put their furniture down! Council tax band B. Freehold.



#### **Hallway**

13'3" (4.04m) x 5'8" (1.73m)

#### **Lounge**

11'4" (3.45m) Into Bay x 11'7" (3.53m)

#### **Dining Room**

11'11" (3.63m) x 10'8" (3.25m)

#### **Kitchen**

8'10" (2.69m) x 7'0" (2.13m)

#### **Conservatory**

11'1" (3.38m) x 9'8" (2.95m)



#### **Bedroom One**

13'0" (3.96m) Into Bay x 10'11" (3.33m)

#### **Bedroom Two**

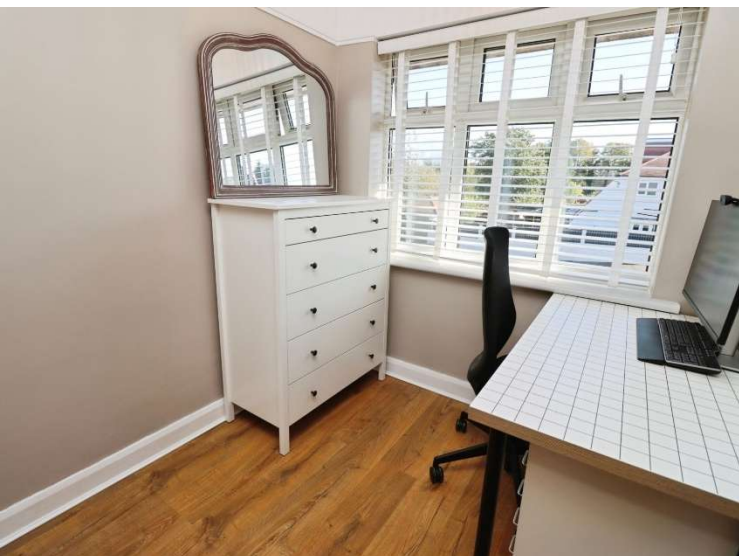
10'6" (3.2m) x 10'11" (3.33m)

#### **Bedroom Three**

7'0" (2.13m) x 6'6" (1.98m)

#### **Bathroom**

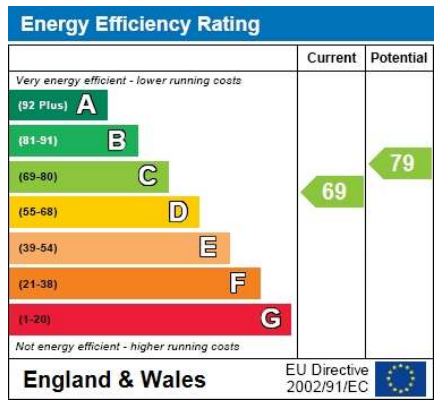
6'6" (1.98m) x 6'2" (1.88m)





GROUND FLOOR

1ST FLOOR



**Contact Us:**

**0151 644 6000**

lesley@lesleyhooks.co.uk

6 Church Road, Bebington,

Wirral, Merseyside, CH63 7PH

WHERE EVERY PROPERTY HAS BEEN MADE TO ENSURE THE ACCURACY OF THE FIGURES CONSIDERED HERE, MEASUREMENTS OF ROOMS, WALLS, CEILING AND FLOOR ARE TAKEN TO THE CENTER OF THE WALLS. THE DATA FOR MEASUREMENTS ARE ONLY VALID FOR THE PROPERTY AS SHOWN. THE DATA FOR MEASUREMENTS ARE ONLY VALID FOR THE PROPERTY AS SHOWN. THE DATA FOR MEASUREMENTS ARE ONLY VALID FOR THE PROPERTY AS SHOWN. THE DATA FOR MEASUREMENTS ARE ONLY VALID FOR THE PROPERTY AS SHOWN.

Disclaimer: Whilst these details are thought to be correct, their accuracy cannot be guaranteed and do not form part of any contract. It should be noted that we have not tested any fixtures, fittings, equipment, apparatus or services, therefore we cannot verify that they are in working order of fit for purpose. Solicitors should be used to confirm that any moveable items described within these details are in fact part of the sale agreement. While we try to ensure measurements are correct they are not guaranteed and purchasers are advised to take their own measurements before ordering any fixtures and fittings. Please note: if you are buying a leasehold property, please ensure that all details and conditions of the lease are checked with your solicitor prior to you incurring any costs as additional fees could be incurred for items such as leasehold packs.