



# Gorseysville, Bebington

£300,000 Offers Over



**LESLEY HOOKS**  
ESTATE AGENTS







This stunning and extended semi-detached home is the perfect blend of contemporary style and comfortable living, ready for you to move straight into. With uPVC double glazing and a combi-fired gas central heating system, this beautifully presented property offers a spacious and inviting layout. Step inside to a welcoming hallway that leads to a bright and airy lounge, while the heart of the home is the open-plan kitchen family room. This impressive space boasts a stylish island unit, a charming Victorian-style cast iron fireplace, and a conservatory dining area, creating a wonderful setting for both relaxing and entertaining. The first floor offers three well-proportioned bedrooms and a sleek, modern three-piece bathroom, complete with a shower and shower screen over the bath. The second floor reveals a generously sized fourth bedroom with built-in eaves wardrobes, providing ample storage and a peaceful retreat. Outside, the property continues to impress with a driveway offering off-road parking leading to the garage. The rear garden is a true highlight, featuring a lovely patio area that enjoys a sun-soaked southerly aspect—ideal for outdoor dining and enjoying the warmer months. Ideally located within walking distance of excellent primary, secondary, and grammar schools, it's an ideal choice for families. A fantastic opportunity to own a stylish and spacious home in a desirable location—early viewing is highly recommended! Council tax band C. Freehold.



#### **Hallway**

10'9" (3.28m) x 5'11" (1.8m)

#### **Lounge**

12'1" (3.68m) Into Bay x 11'4" (3.45m)

#### **Open Plan Kitchen Family Room**

22'0" (6.71m) Max x 17'10" (5.44m) Max

#### **Bedroom One**

12'4" (3.76m) Into Bay x 11'5" (3.48m)

#### **Bedroom Two**

11'10" (3.61m) x 11'5" (3.48m)

#### **Bedroom Three**

6'11" (2.11m) x 5'11" (1.8m)

#### **Bathroom**

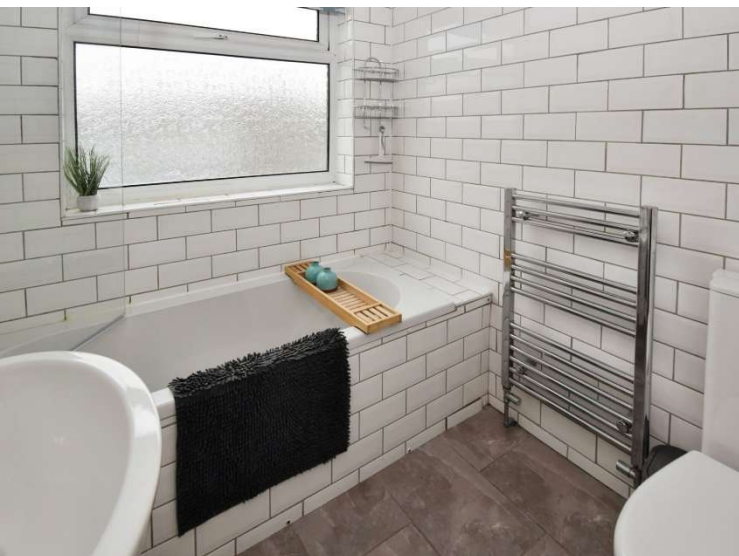
6'0" (1.83m) x 5'11" (1.8m)

#### **Bedroom Four**

16'1" (4.9m) Max x 12'7" (3.84m)











GROUND FLOOR



FIRST FLOOR



SECOND FLOOR



## Contact Us:

**0151 644 6000**

[lesley@lesleyhooks.co.uk](mailto:lesley@lesleyhooks.co.uk)

6 Church Road, Bebington,

Wirral, Merseyside, CH63 7PH

Whilst every attempt has been made to ensure the accuracy of the floorplan contained here, measurements of doors, windows, rooms and any other items are approximate and no responsibility is taken for any error, omission or misstatement. The plan is for illustrative purposes only and should be used as a guide to only prospective purchasers. The services, systems and appliances shown have not been tested and no guarantee is given as to their condition or efficiency on the plan. Made with Metropix G202.

Disclaimer: Whilst these details are thought to be correct, their accuracy cannot be guaranteed and do not form part of any contract. It should be noted that we have not tested any fixtures, fittings, equipment, apparatus or services, therefore we cannot verify that they are in working order of fit for purpose. Solicitors should be used to confirm that any moveable items described within these details are in fact part of the sale agreement. While we try to ensure measurements are correct they are not guaranteed and purchasers are advised to take their own measurements before ordering any fixtures and fittings. Please note: if you are buying a leasehold property, please ensure that all details and conditions of the lease are checked with your solicitor prior to you incurring any costs as additional fees could be incurred for items such as leasehold packs.