



Selhurst Close, East Preston

Freehold

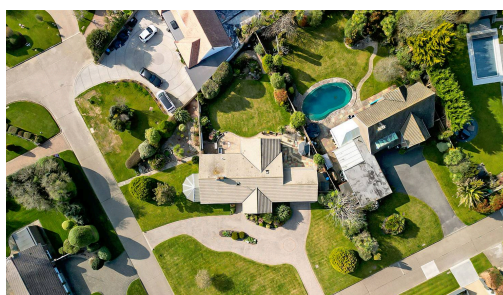
Stunning detached bungalow on the prestigious Willowhayne Estate, offered with no onward chain. • Beautifully transformed and spacious home featuring three bedrooms, including a luxurious principal suite with en-suite and walk-in wardrobe. • Set on an expansive 0.53-acre plot with a sweeping in-and-out driveway, garage, and useful laundry room. • Immaculately presented gardens providing a peaceful retreat, offering the perfect blend of elegance, space, and modern comfort. • Light-filled dual-aspect lounge leading to a charming sunroom, plus a stylish fitted kitchen with dining area. • For more information go to [Cooper Adams website](#)

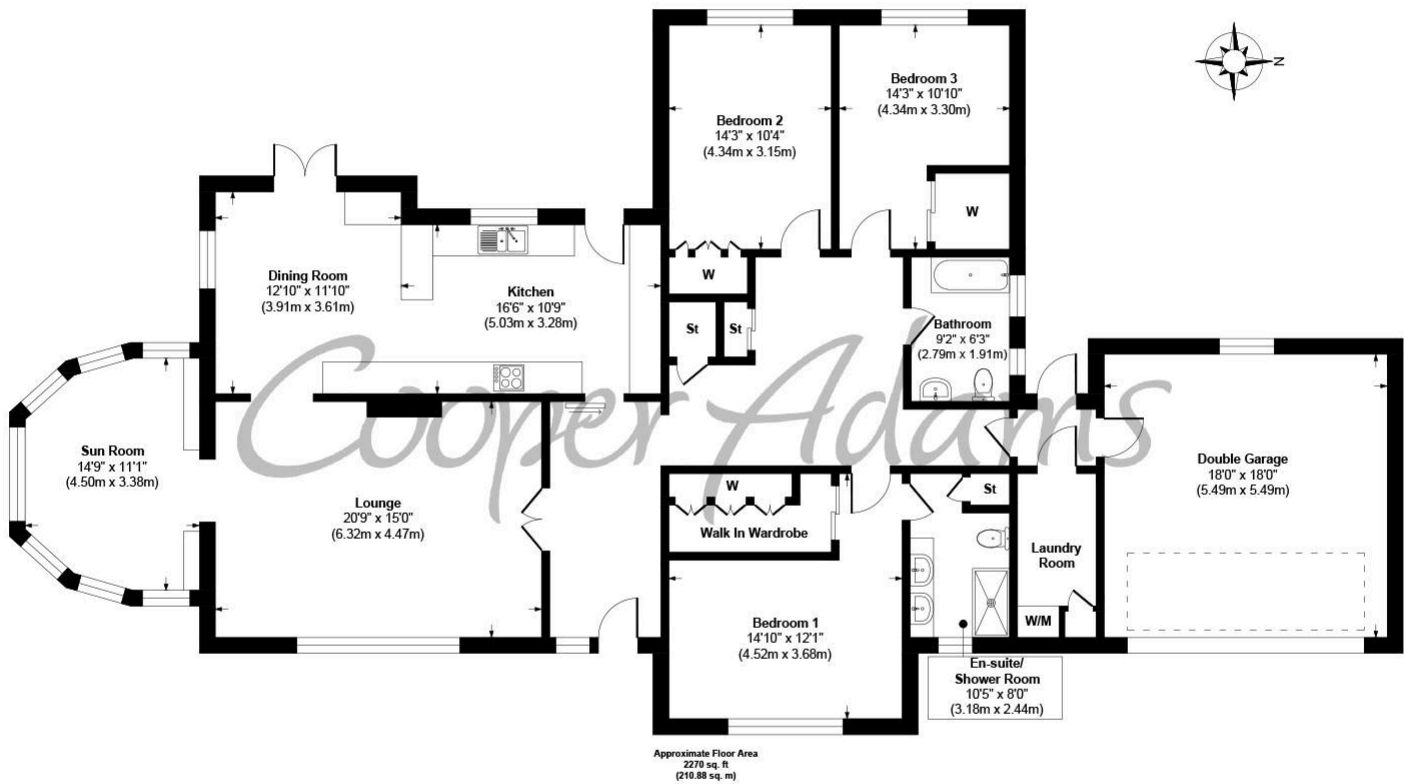
Cooper Adams

Stunning Detached Bungalow on the Prestigious Willowhayne Estate Set on a spacious 0.53-acre plot, this beautifully transformed bungalow offers elegance, modern living, and no onward chain. The welcoming entrance hall leads to three well-proportioned bedrooms, including a luxurious principal suite with an en-suite and walk-in wardrobe. A bright dual-aspect lounge flows into a charming sunroom, while the stylish fitted kitchen boasts a dedicated dining area. Externally, a sweeping in-and-out driveway, garage, and versatile laundry room enhance the property. The immaculately kept gardens provide a peaceful retreat in this exclusive location. Viewing is highly recommended.



The exclusive Willowhayne Marine Estate in East Preston, this prestigious location offers privacy, security, and coastal charm, with gated access on summer weekends. Just over half a mile from the railway station, it provides easy access to Brighton, Gatwick, and London. Surrounded by beautiful countryside, golf courses, and a variety of shops, restaurants, and cafés, this location offers the perfect blend of coastal and countryside living.





Selhurst Close East Preston, West Sussex, BN16 2SR
Approx. Gross Internal Floor Area 2270 sq. ft / 210.88 sq. m

Illustration for identification purposes only, measurements are approximate, not to scale.

Copyright © Cooper Adams

This material is protected by laws of copyright which is owned by Cooper Adams. Whilst every attempt has been made to ensure the accuracy of these details and floor plan contained here, they do not constitute any offer or contract or part thereof. All measurements are always maximum measurements into bay windows, alcoves and for L shaped rooms. No guarantee is given on total square footage taken from the floor plan. The details, pictures, maps and floor plans are for illustration purposes only and not to scale. Any appliances and/or services have not been tested. Cooper Adams is a trading name of Cooper Adams Estates Limited registered at Bishopstone. Registered in England and Wales. Our registered number is 07127482. Our VAT Number is 982847172.

Lettings | Sales | Free valuations | Land & New Homes | Mortgages

FULL DETAILS OF THE MATERIAL INFORMATION ARE ON OUR WEBSITE - VIEWING STRICTLY BY APPOINTMENT WITH COOPER ADAMS

FOR MORE PHOTOS AND TO BOOK A VIEWING VISIT OUR WEBSITE - Tel: 01903 791 792 - www.cooper-adams.com