



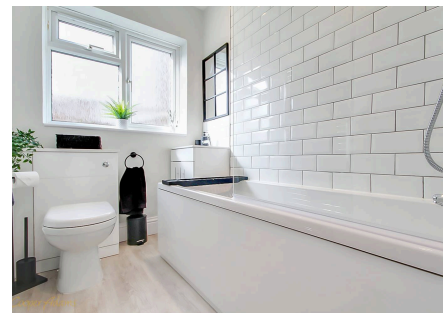
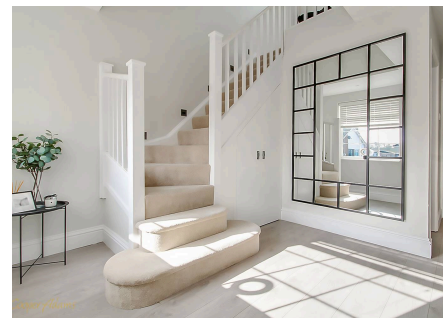
## Ashurst Way, East Preston

Freehold

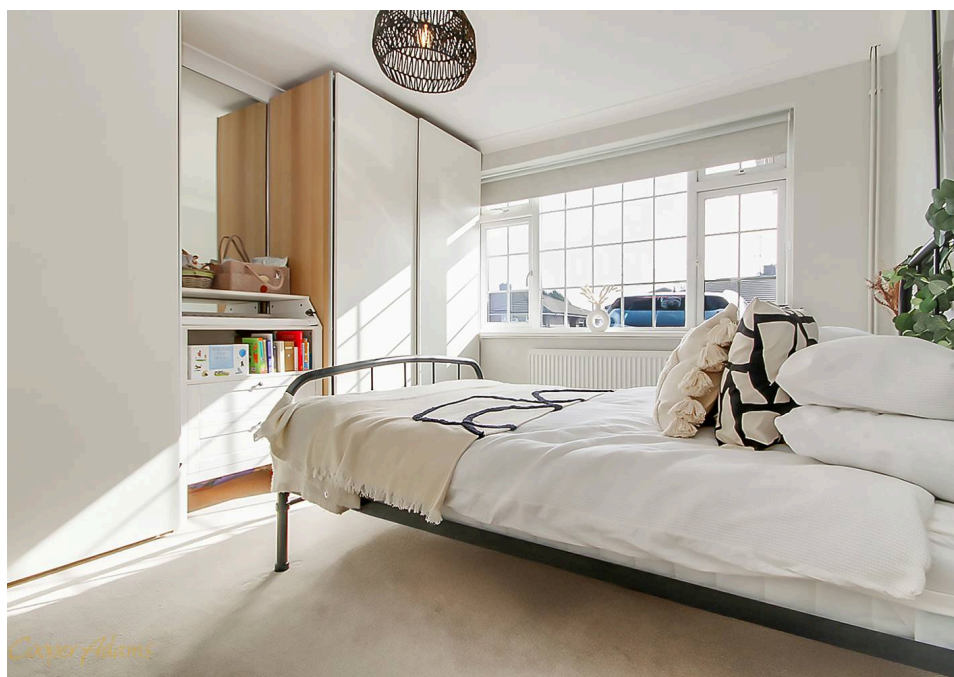
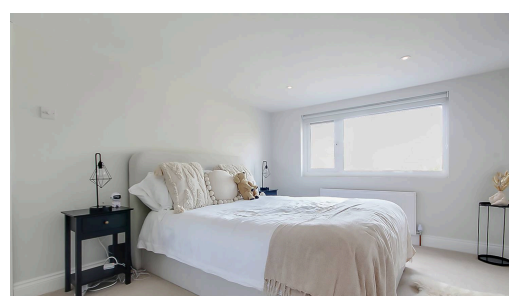
Four-Bedroom Semi-Detached Chalet Bungalow • Extended open-plan kitchen diner • Situated in the highly sought-after village of East Preston • Spacious separate living room • This property won't be on the market for long! • For more information go to [Cooper Adams website](#)

*Cooper Adams*

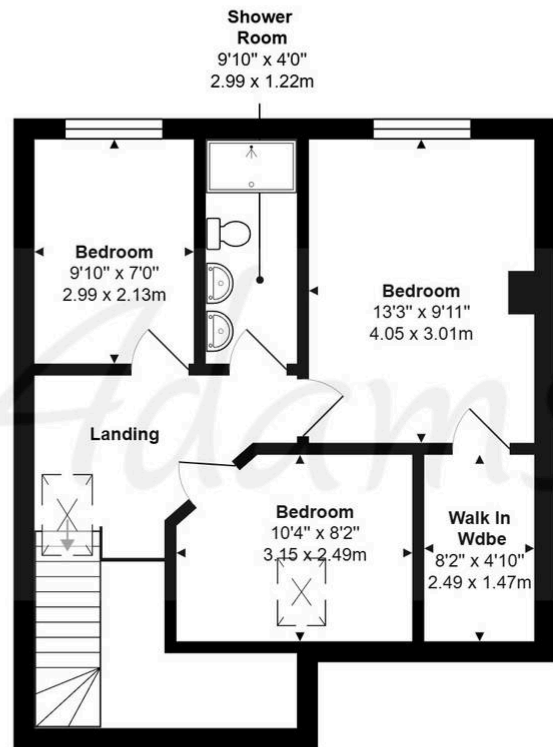
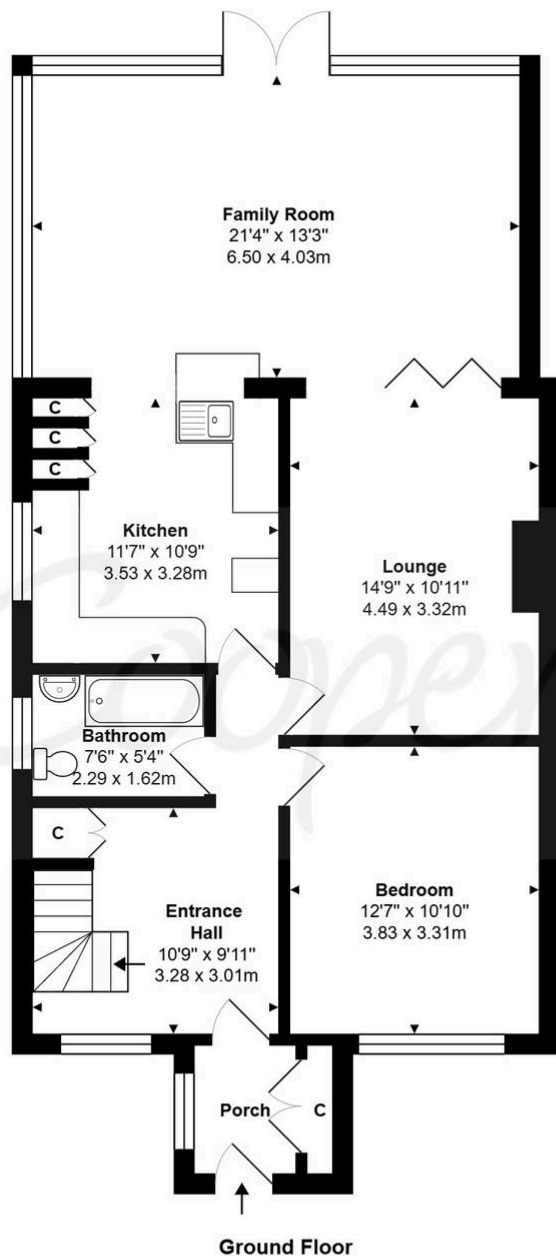
Located in the sought-after village of East Preston, this beautifully presented four-bedroom semi-detached chalet bungalow combines modern comfort with timeless charm. Ideal for families or those needing versatile space, the property features a bright entrance hall, spacious living room, and a stunning open-plan kitchen/dining/living area—perfect for entertaining or everyday living. The kitchen is stylish and well-equipped, while four generously sized bedrooms offer flexibility for bedrooms, guest rooms, or home offices. A ground-floor bedroom sits next to a sleek family bathroom, with a second bathroom upstairs serving the remaining bedrooms. In excellent condition and ready to move into, the home is within walking distance of local shops, schools, the coast, and just nine minutes from Angmering Station. A fantastic opportunity in a prime location—early viewing is highly recommended.



This home is ideally located near East Preston village centre, providing easy access to local amenities including schools and parks. East Preston, a charming seaside village in West Sussex just south of the South Downs National Park, offers a strong sense of community and is often described as 'living in the country by the sea.' The village features essentials such as shops, a post office, library, tennis club, restaurants, churches, and schools. Leisure options include sailing, golf, and health clubs, while the peaceful pebble beach nearby is perfect for relaxing walks year-round.







**First Floor**

Ashurst Way, East Preston, BN16 1AQ

Total Approx. Floor Area 1480 ft<sup>2</sup> ... 137.5 m<sup>2</sup>

Whilst every attempt has been made to ensure the accuracy of the floor plan contained here, measurements are approximate and no responsibility is taken for any error, omission or mis-statement.  
This plan is for illustrative purposes only and should be used as such by any prospective purchaser.  
Prepared by Jtm 2025



You can include any text here. The text can be modified upon generating your brochure.

This material is protected by laws of copyright which is owned by Cooper Adams. Whilst every attempt has been made to ensure the accuracy of these details and floor plan contained here, they do not constitute any offer or contract or part thereof. All measurements are always maximum measurements into bay windows, alcoves and for L shaped rooms. No guarantee is given on total square footage taken from the floor plan. The details, pictures, maps and floor plans are for illustration purposes only and not to scale. Any appliances and/or services have not been tested. Cooper Adams is a trading name of Cooper Adams Estates Limited registered at Bishopstone. Registered in England and Wales. Our registered number is 07127482. Our VAT Number is 982847172.

Lettings | Sales | Free valuations | Land & New Homes | Mortgages

FULL DETAILS OF THE MATERIAL INFORMATION ARE ON OUR WEBSITE - VIEWING STRICTLY BY APPOINTMENT WITH COOPER ADAMS

FOR MORE PHOTOS AND TO BOOK A VIEWING VISIT OUR WEBSITE - Tel: 01903 791 792 - www.cooper-adams.com