



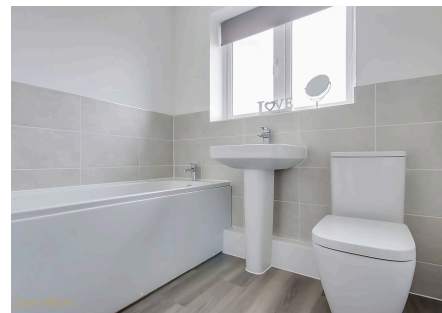
Avocet Drive, Angmering, BN16 4QL

Freehold

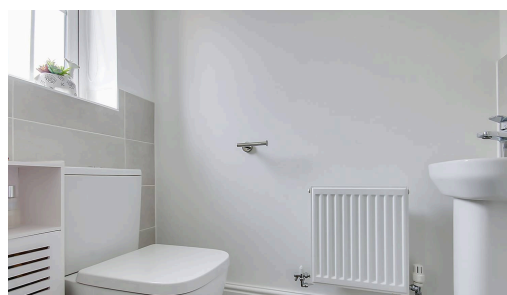
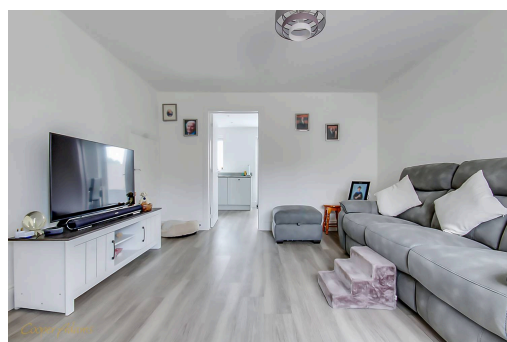
Immaculate two double bedroom semi-detached house • Remaining NHBC • Fully Fitted kitchen/breakfast room • South facing garden • Solar panels • Electric charging point • Driveway and parking for two cars • For more information, visit the Cooper Adams website

Cooper Adams

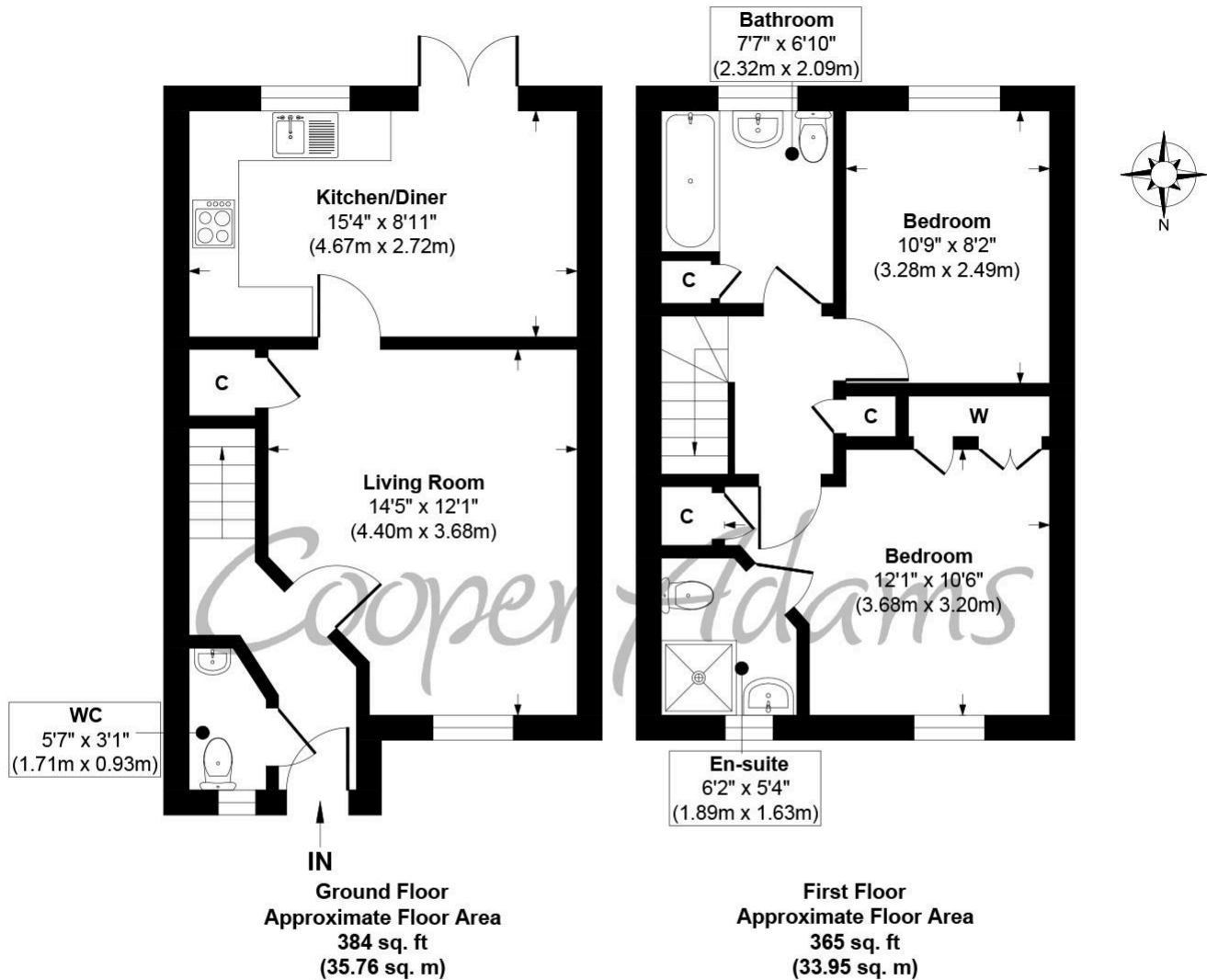
This immaculate Charles Church-built semi-detached home offers stylish, modern living in a peaceful spot within the development. Inside, you'll find a bright sitting room, a convenient downstairs cloakroom, and a contemporary kitchen/breakfast room that opens onto a sunny south-facing garden—complete with a patio ideal for alfresco dining and handy side access for garden maintenance. Upstairs, there are two double bedrooms, including a main with fitted wardrobes and en-suite, as well as a sleek family bathroom. The home offers generous storage throughout, plus a garden shed for additional space. A private driveway at the front provides parking for two vehicles and includes an EV charging point. Solar panels further enhance the home's eco-friendly appeal.



Angmering, a charming village near the South Downs, offers shops, schools, a health club, and a golf course. Beaches are within 2 miles, and nearby shopping is available in Rustington and Worthing. Angmering station connects to London, Brighton, and more, with Gatwick 40 miles away and easy access to the A27 and A24 roads.



Cooper Adams



Material Information includes important facts that may affect a buyer's decision to view or buy, such as tenure, restrictions, utilities, construction, and other key details. Full information for this property is available at www.cooper-adams.com. We may offer buyer services and receive referral benefits – details on request. All content is copyright Cooper Adams. Details and floor plans are for guidance only and don't form part of any contract. Measurements are maximums including bays and alcoves. Floor plan sizes are approximate. Images, maps and plans are not to scale. Appliances/services not tested. Cooper Adams Estates Ltd, Bishopstone. Reg No: 07127482. VAT No: 982847172.

Lettings | Sales | Free valuations | Land & New Homes | Mortgages

FULL DETAILS OF THE MATERIAL INFORMATION ARE ON OUR WEBSITE - VIEWING STRICTLY BY APPOINTMENT WITH COOPER ADAMS

FOR MORE PHOTOS AND TO BOOK A VIEWING VISIT OUR WEBSITE - Tel: 01903 791 792 - www.cooper-adams.com