

## Furzefield Close, Angmering, BN16 4LS

Freehold

Re-furbished three bedroom semi-detached bungalow • Fantastic open-plan kitchen/living area with bi-fold doors • Driveway for at least four cars • Garage • Sought after location • For more information visit the Cooper Adams website

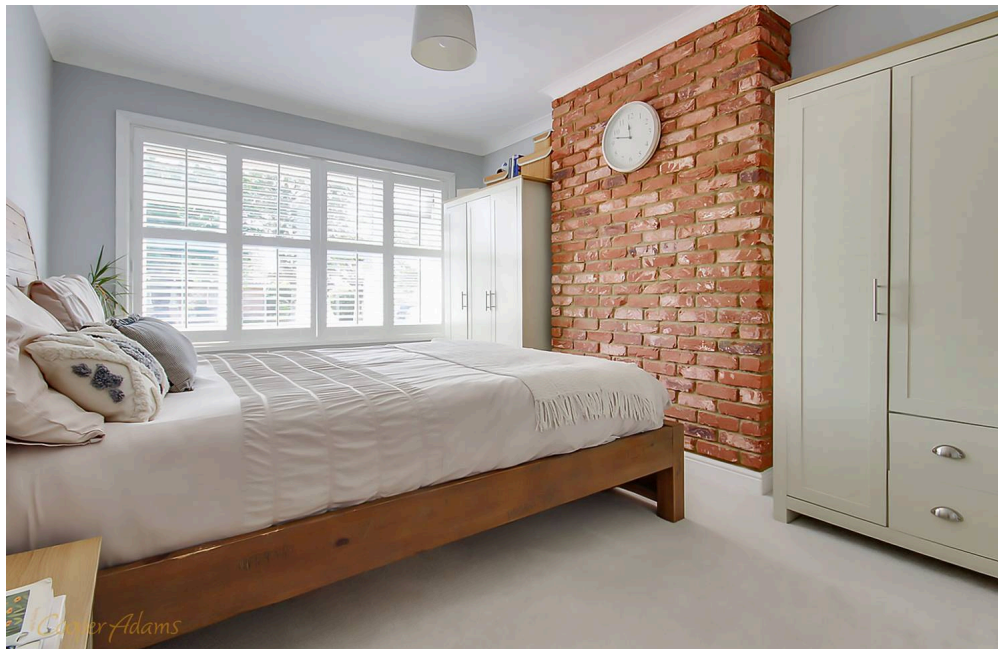
*Cooper Adams*



Welcome to this beautifully refurbished three-bedroom semi-detached bungalow, perfectly positioned in a highly sought-after location. Designed with modern living in mind, the home features a stunning open-plan kitchen, dining, and living area complete with bi-fold doors that open seamlessly onto a low maintenance private garden, ideal for relaxed mornings or entertaining guests. The property also offers two generous double bedrooms and a comfortable single bedroom/study, providing flexible living space for families or visitors.

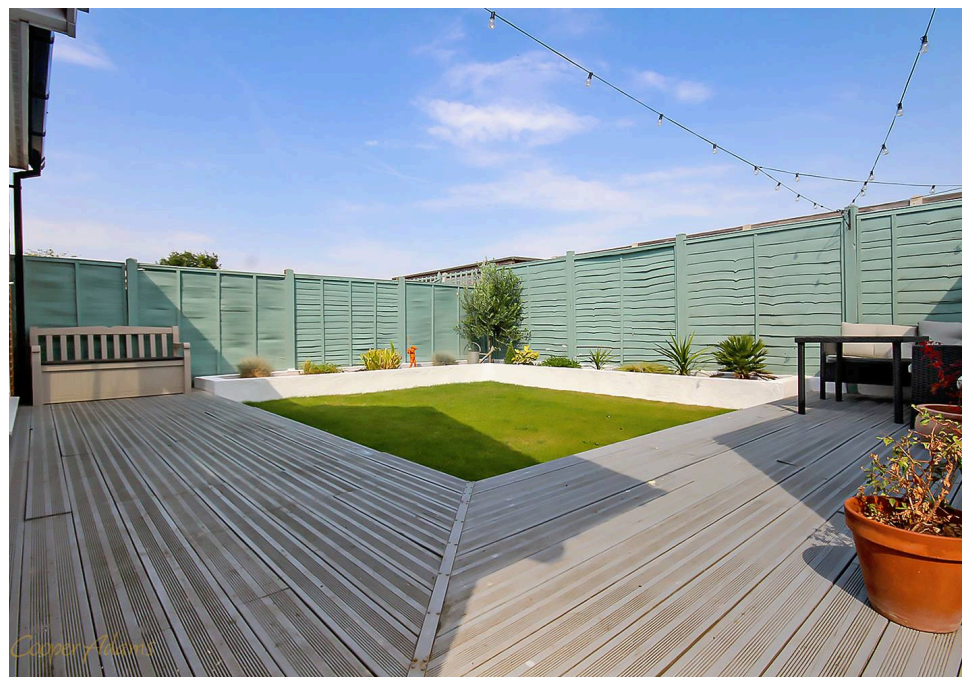
Additional highlights include a private driveway with space for at least four vehicles, plus a garage for secure storage or parking.

Located within easy reach of local amenities, shops, pubs, and well-regarded schools, this is a rare opportunity to enjoy both convenience and comfort in an exceptional setting.

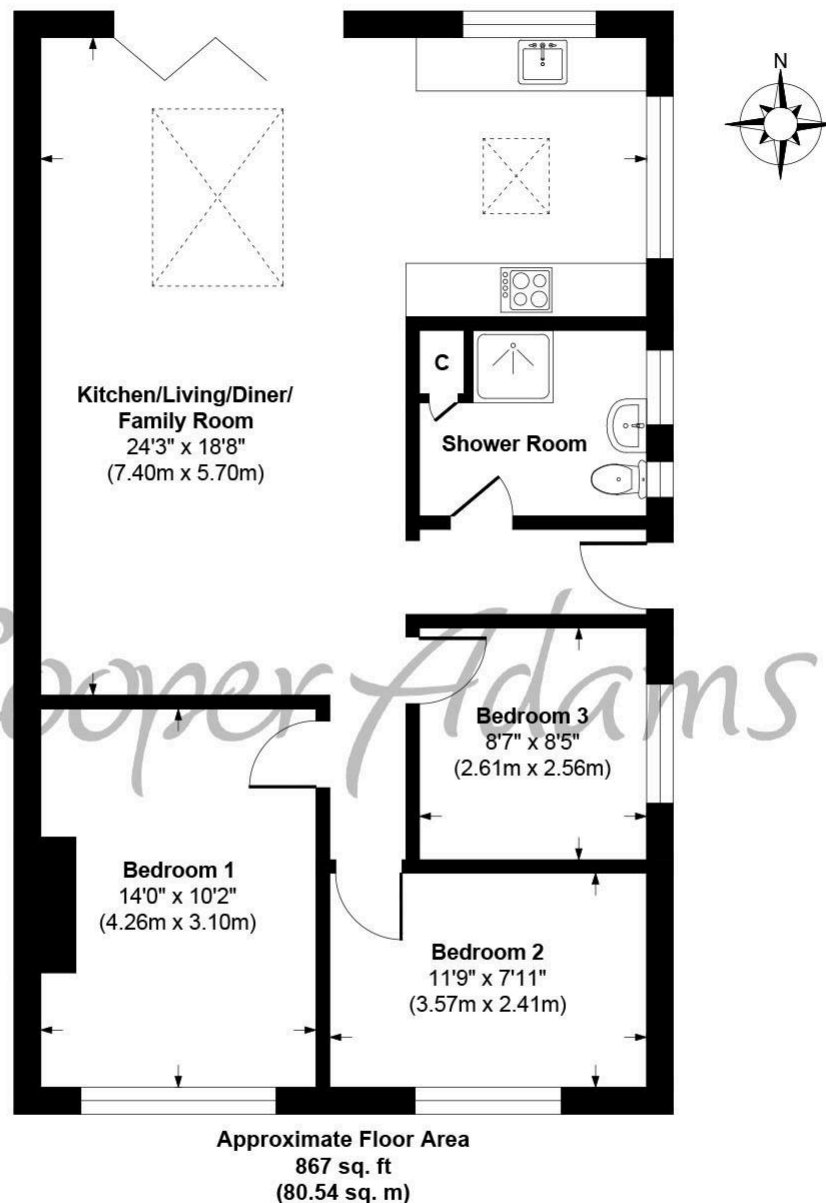


Angmering, a charming village near the South Downs, offers shops, schools, a health club, and a golf course. Beaches are within 2 miles, and nearby shopping is available in Rustington and Worthing. Angmering station connects to London, Brighton, and more, with Gatwick 40 miles away and easy access to the A27 and A24 roads.

This property is "Legally Prepared." Cooper Adams has gathered key documents, including the title, plans, property forms, warranties, and EPC. Buyers must request these before offering.



Cooper Adams



**Furzefield Close, Angmering, BN16 4LS**  
**Approx. Gross Internal Floor Area 867 sq. ft / 80.54 sq. m**

Illustration for identification purposes only, measurements are approximate, not to scale

Copyright © Cooper Adams



Material Information includes important facts that may affect a buyer's decision to view or buy, such as tenure, restrictions, utilities, construction, and other key details. Full information for this property is available at [www.cooper-adams.com](http://www.cooper-adams.com). We may offer buyer services and receive referral benefits – details on request. All content is copyright Cooper Adams. Details and floor plans are for guidance only and don't form part of any contract. Measurements are maximums including bays and alcoves. Floor plan sizes are approximate. Images, maps and plans are not to scale. Appliances/services not tested. Cooper Adams Estates Ltd, Bishopstone. Reg No: 07127482. VAT No: 982847172.

Lettings | Sales | Free valuations | Land & New Homes | Mortgages

FULL DETAILS OF THE MATERIAL INFORMATION ARE ON OUR WEBSITE - VIEWING STRICTLY BY APPOINTMENT WITH COOPER ADAMS

FOR MORE PHOTOS AND TO BOOK A VIEWING VISIT OUR WEBSITE - Tel: 01903 791 792 - [www.cooper-adams.com](http://www.cooper-adams.com)