

Blenheim Drive, Rustington, BN16 3SN

Freehold

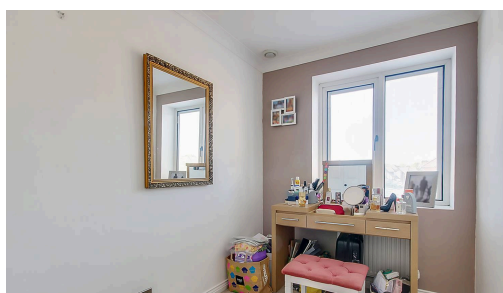
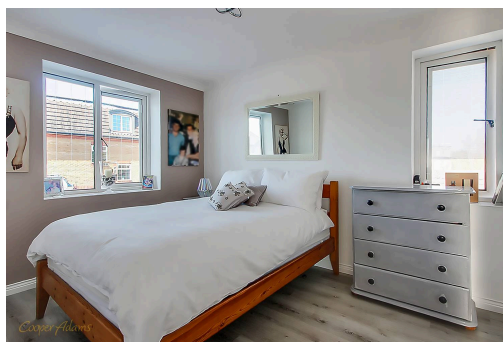
- A Detached Family Home
- Three Bedrooms with Fitted Wardrobes
- En-Suite to Primary Bedroom
- New Kitchen & Bathrooms
- New Radiators & Windows Throughout
- Driveway & Converted Garage
- Popular Parklands Estate
- Close to Local Schools
- Approx. 1311 sq. ft (121.8 sq. m)

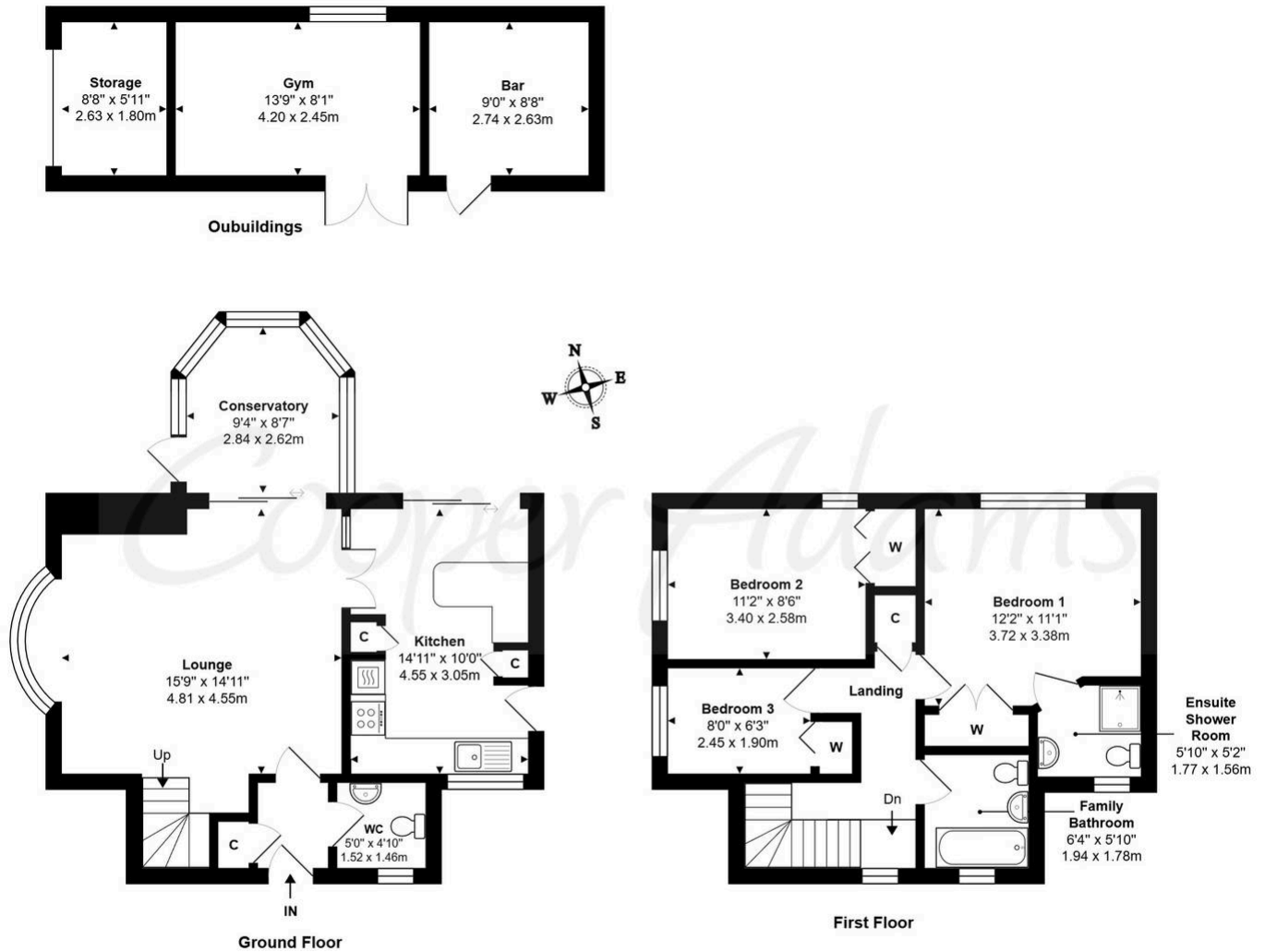
Cooper Adams

Tucked away on the ever-popular Parklands Estate, this beautifully presented detached family home offers a stylish and modern lifestyle, perfect for growing families. Boasting three good sized bedrooms, all with fitted wardrobes, the home includes a modern en-suite to the primary bedroom. Recently refurbished throughout, the property features brand new bathrooms and a top of the range kitchen, new radiators, and new windows, offering both comfort and efficiency. The modern living room offers a bay window to the front, and a media wall with a built-in feature fireplace, providing a stylish focal point and the perfect space to relax or entertain. The room is bright and airy, with a contemporary finish that complements the overall high standard of the home. There is also a conservatory overlooking the rear garden. Outside, you'll find a driveway for off-road parking, and a partially converted garage currently used as a home gym and bar, and the enclosed rear garden garden. Located close to excellent local schools, this home is ideal for families seeking a peaceful yet convenient location.



Rustington, a charming seaside village in West Sussex, offers a welcoming community, excellent shops, restaurants, and nearby leisure activities like sailing and golf. Its unspoiled pebble beach is perfect for peaceful walks, providing a serene escape just minutes away. Ideally located for all amenities, Rustington is a delightful place to live and unwind.





Blenheim Drive, Rustington, BN16 3SN

Total Approx. Floor Area 1311 ft² ... 121.8 m² (Includes Outbuilding)

Whilst every attempt has been made to ensure the accuracy of the floor plan contained here, measurements are approximate and no responsibility is taken for any error, omission or mis-statement.
This plan is for illustrative purposes only and should be used as such by any prospective purchaser.
Prepared by 1st Image 2025

Council Tax band: E, EPC Energy Efficiency Rating: D, EPC Environmental Impact Rating: E

Material Information includes important facts that may affect a buyer's decision to view or buy, such as tenure, restrictions, utilities, construction, and other key details. Full information for this property is available at www.cooper-adams.com. We may offer buyer services and receive referral benefits - details on request. All content is copyright Cooper Adams. Details and floor plans are for guidance only and don't form part of any contract. Measurements are maximums including bays and alcoves. Floor plan sizes are approximate. Images, maps and plans are not to scale. Appliances/services not tested. Cooper Adams Estates Ltd, Bishopstone. Reg No: 07127482. VAT No: 982847172.

Lettings | Sales | Free valuations | Land & New Homes | Mortgages

FULL DETAILS OF THE MATERIAL INFORMATION ARE ON OUR WEBSITE - VIEWING STRICTLY BY APPOINTMENT WITH COOPER ADAMS

FOR MORE PHOTOS AND TO BOOK A VIEWING VISIT OUR WEBSITE - Tel: 01903 791 792 - www.cooper-adams.com