

St. Margaret's Court Arundel Road, Angmering, BN16 4NQ

Leasehold

Ground floor apartment • Two double bedrooms • Kitchen/breakfast room • En-suite to main bedroom and a separate bathroom • Pretty landscaped grounds • Walking distance to shops, bus routes and amenities • No on going chain • For more information, visit the [Cooper Adams website](http://www.cooperadams.co.uk)

Cooper Adams

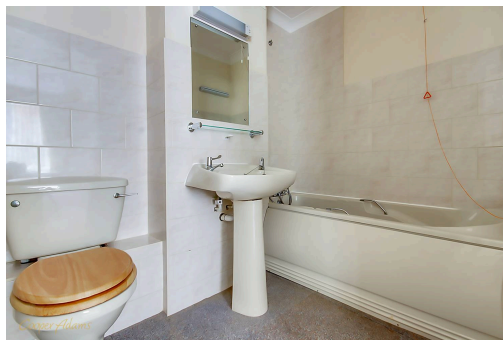
Nestled in the heart of the charming St Margaret's Court retirement village, this delightful ground floor apartment, rarely available, offers the ideal balance of comfort, practicality, and community living. Featuring two double bedrooms—including a main bedroom with en-suite shower room—and a separate bathroom, the layout provides both space and privacy.

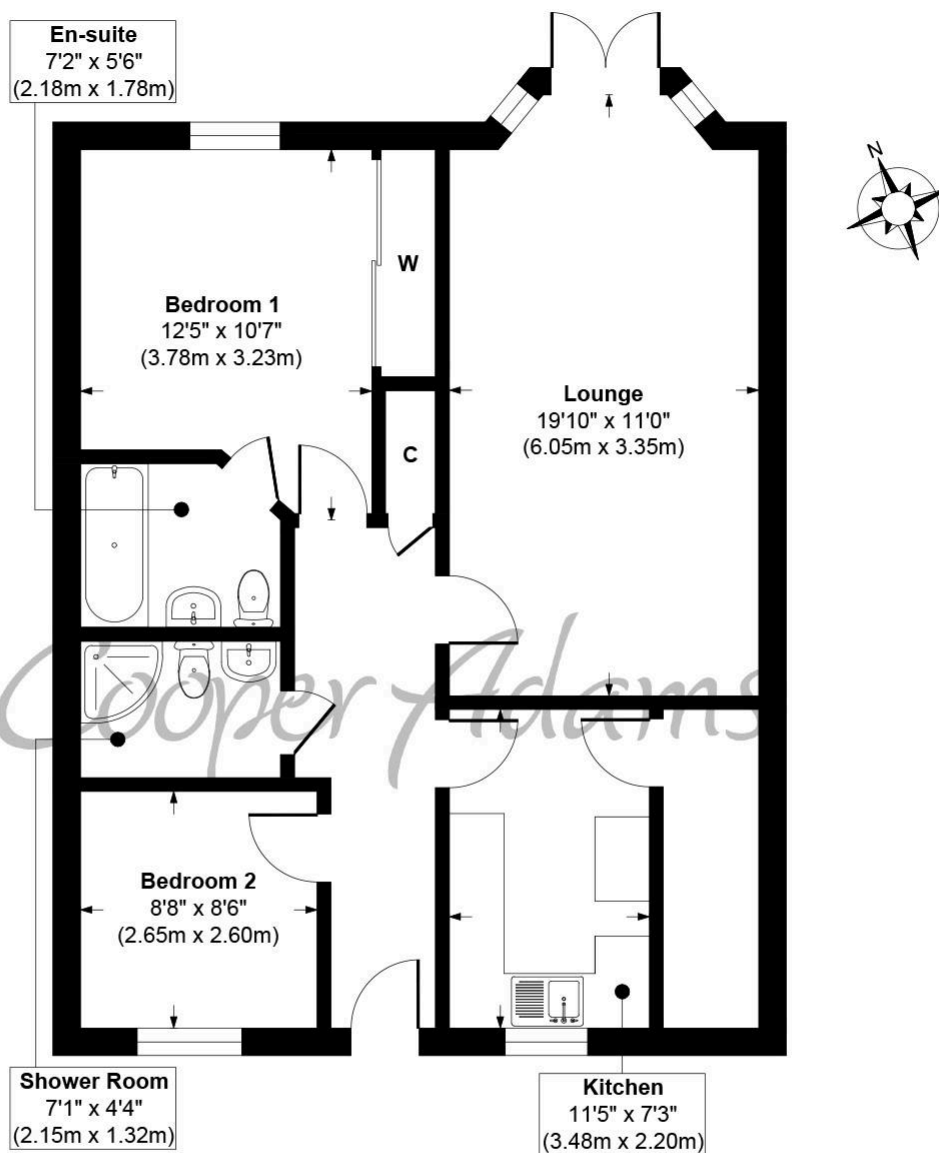
The bright, airy sitting room has doors that open onto a pretty patio area. The fitted kitchen/breakfast room has a convenient pantry cupboard and a good sized airing cupboard in the hall. The apartment has the added reassurance of an on-site warden, this home makes everyday living easy and stress-free. Residents enjoy access to beautifully maintained communal gardens, convenient off-road parking, a communal lounge, laundrette facilities, and a welcoming neighbourhood atmosphere. With shops, bus routes, and local amenities just a short stroll away, independence and accessibility are truly at your doorstep. This property is also offered with no on going chain.



Angmering, a charming village near the South Downs, offers shops, schools, a health club, and a golf course. Beaches are within 2 miles, and nearby shopping is available in Rustington and Worthing. Angmering station connects to London, Brighton, and more, with Gatwick 40 miles away and easy access to the A27 and A24 roads.

This property is "Legally Prepared." Cooper Adams has gathered key documents, including the title, plans, property forms, warranties, and EPC. Buyers must request these before offering.





Approximate Floor Area
786 sq. ft
(73.00 sq. m)

St Margarets Court, Arundel Road, Angmering, BN16 4NQ
Approx. Gross Internal Floor Area 786 sq. ft / 73.00 sq. m

Illustration for identification purposes only, measurements are approximate, not to scale

Copyright © Cooper Adams



Material Information includes important facts that may affect a buyer's decision to view or buy, such as tenure, restrictions, utilities, construction, and other key details. Full information for this property is available at www.cooper-adams.com. We may offer buyer services and receive referral benefits – details on request. All content is copyright Cooper Adams. Details and floor plans are for guidance only and don't form part of any contract. Measurements are maximums including bays and alcoves. Floor plan sizes are approximate. Images, maps and plans are not to scale. Appliances/services not tested. Cooper Adams Estates Ltd, Bishopstone. Reg No: 07127482. VAT No: 982847172.

Lettings | Sales | Free valuations | Land & New Homes | Mortgages

FULL DETAILS OF THE MATERIAL INFORMATION ARE ON OUR WEBSITE - VIEWING STRICTLY BY APPOINTMENT WITH COOPER ADAMS

FOR MORE PHOTOS AND TO BOOK A VIEWING VISIT OUR WEBSITE - Tel: 01903 791 792 - www.cooper-adams.com