



Chiltern Close, East Preston

Freehold

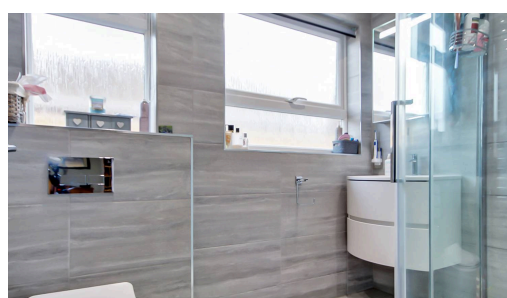
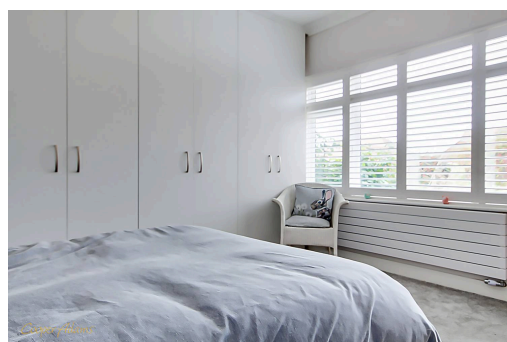
Ready for immediate occupancy, eliminating the hassle of property chains. • South-Facing Garden enjoying abundant natural light and sun-soaked outdoor moments in the private garden • The spacious layout seamlessly connects living, dining, and kitchen areas, perfect for contemporary lifestyles. • Three well-appointed bedrooms providing ample space for family, guests, or a home office setup. • Convenient off-street parking with driveway and garage, with additional storage options. • For more information please go to the Cooper Adams website

Cooper Adams

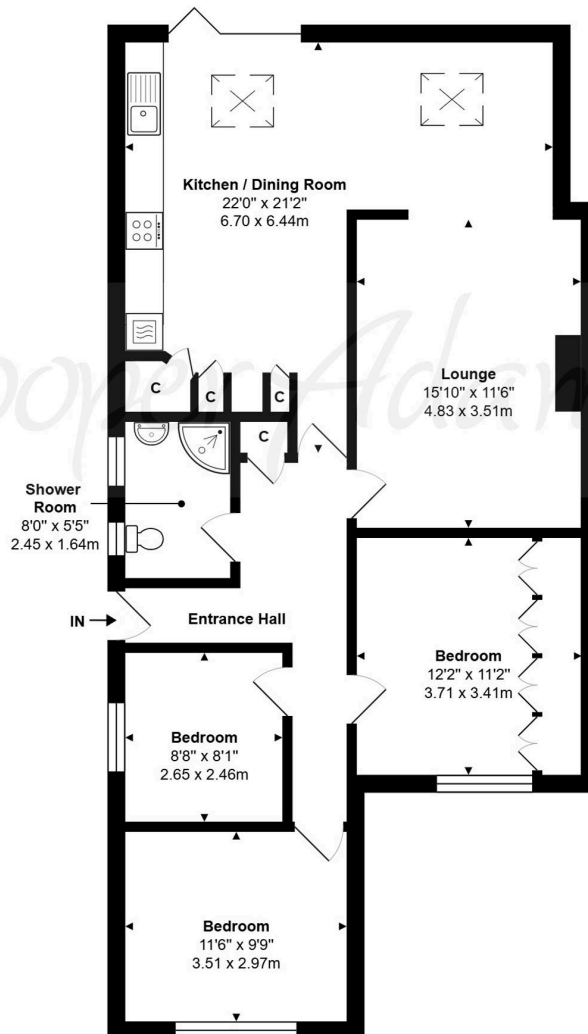
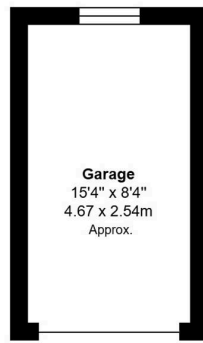
Embrace Coastal Living in Style – Stunning Chain-Free Three-Bedroom Bungalow in the Heart of East Preston. Tucked away in a peaceful cul-de-sac at the heart of East Preston village, this beautifully modernised three-bedroom semi-detached bungalow is a hidden gem. Thoughtfully updated throughout, it combines stylish, contemporary interiors with a relaxed coastal lifestyle — just a short stroll from the sea. Wake up to the sound of the waves and enjoy scenic coastal walks East Preston to Ferring, Rustington, and Goring-by-Sea — all just moments from your doorstep. Whether you're looking to downsize in style, find the perfect family retreat, or enjoy a slower pace by the sea, this home delivers on every front. Offered **chain free**, with light-filled living spaces, a sleek modern finish, and an unbeatable location, this is more than just a home — it's your gateway to village life and coastal charm. **Don't miss this rare opportunity** — contact us today to arrange your viewing and start your next chapter in East Preston.



East Preston, a charming seaside village in West Sussex, is nestled just south of the South Downs National Park. It exudes a strong sense of community, often described as 'Living in the country by the sea.'



Cooper Adams



Chiltern Close, East Preston, BN16 1RE

Total Area: 1142 ft² ... 106.1 m² (Includes Garage)

Whilst every attempt has been made to ensure the accuracy of the floor plan contained here, measurements are approximate and no responsibility is taken for error, omission or mis-statement.
This plan is for illustrative purposes only and should be used as such by any prospective purchaser.
Created by Jtm 2024



Material Information includes important facts that may affect a buyer's decision to view or buy, such as tenure, restrictions, utilities, construction, and other key details. Full information for this property is available at www.cooper-adams.com. We may offer buyer services and receive referral benefits - details on request. All content is copyright Cooper Adams. Details and floor plans are for guidance only and don't form part of any contract. Measurements are maximums including bays and alcoves. Floor plan sizes are approximate. Images, maps and plans are not to scale. Appliances/services not tested. Cooper Adams Estates Ltd, Bishopstone. Reg No: 07127482. VAT No: 982847172.

Lettings | Sales | Free valuations | Land & New Homes | Mortgages

FULL DETAILS OF THE MATERIAL INFORMATION ARE ON OUR WEBSITE - VIEWING STRICTLY BY APPOINTMENT WITH COOPER ADAMS

FOR MORE PHOTOS AND TO BOOK A VIEWING VISIT OUR WEBSITE - Tel: 01903 791 792 - www.cooper-adams.com