



## Ambersham Crescent, East Preston

### Freehold

Quiet cul-de-sac location in the heart of East Preston. • Just a short walk to shops, schools, and the beach. • Spacious 22'7" dual-aspect lounge/diner with garden access. • Private west-facing rear garden. • Three well-proportioned bedrooms and family bathroom. • Ideal first-time buy or rental investment with scope to add value.

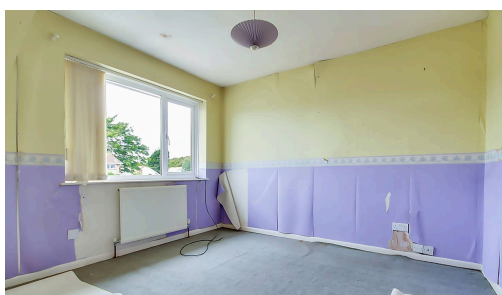
*Cooper Adams*

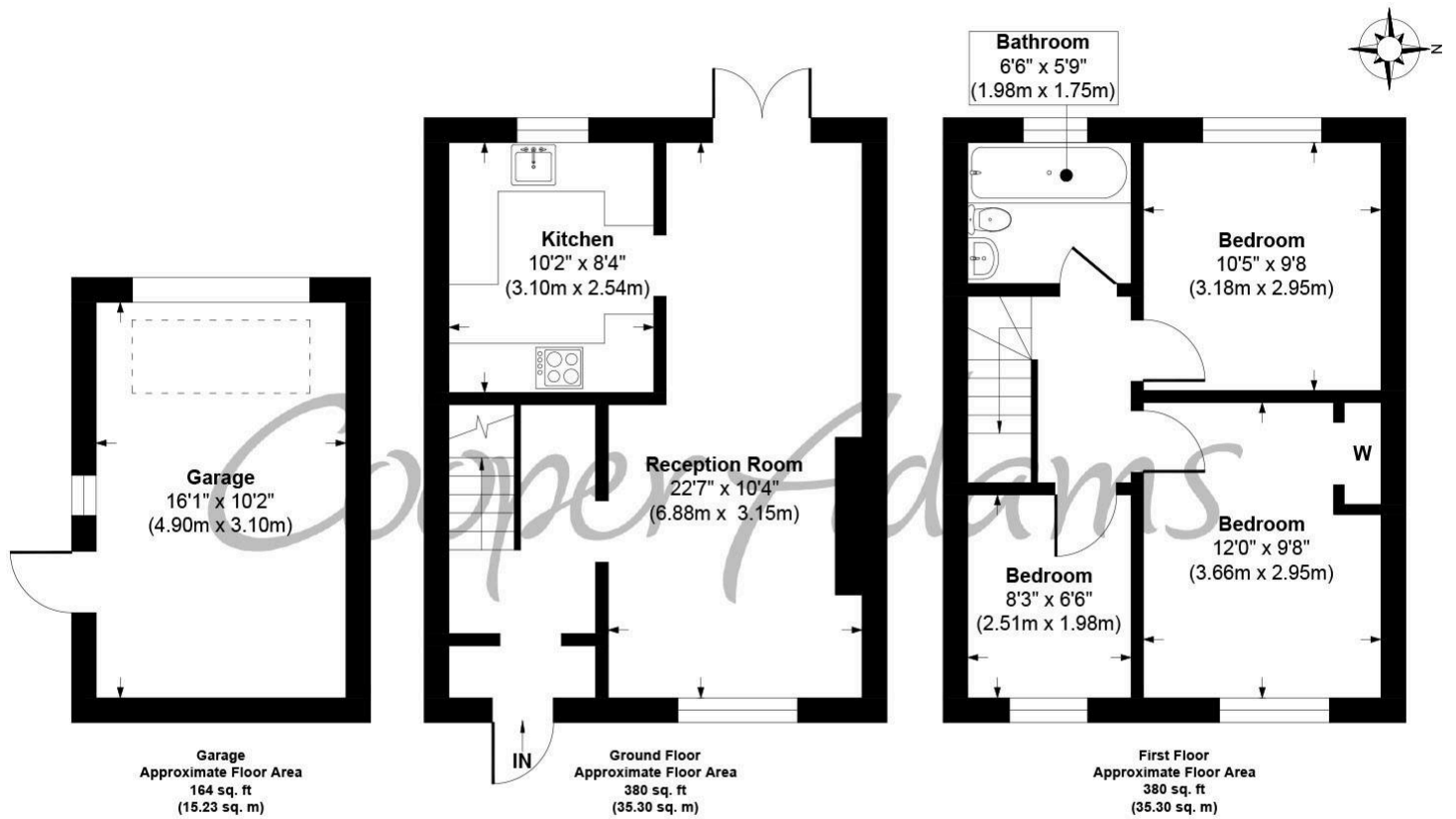


**NO CHAIN! Perfect First Home or Investment – East Preston.** Nestled in a peaceful walk close to the heart of East Preston, this three-bedroom terraced house presents an excellent opportunity for first-time buyers or investors alike. Just a short stroll from village shops, schools, and the beach, the location combines convenience with coastal living. The home features a spacious 22'7" dual-aspect lounge/diner, ideal for both relaxing evenings and entertaining, with doors opening directly onto a private west-facing garden. Upstairs are three generously sized bedrooms and a family bathroom, offering plenty of potential for modernisation and future value. With a well-planned kitchen, gas central heating, and double glazing, the property is perfectly liveable from day one while still giving scope to personalise and improve. Whether you're searching for your first step on the property ladder or a strong rental investment, this East Preston home is a smart choice with great potential.



Situated within easy reach of East Preston village centre, mainline train station, and excellent transport links via the A259 and A27, this home is ideally placed for coastal living with all amenities close by.





**Ambersham Crescent, East Preston, West Sussex, BN16 1AJ**  
**Approx. Gross Internal Floor Area 924 sq. ft / 85.83 sq. m**

Illustration for identification purposes only, measurements are approximate, not to scale.

Copyright © Cooper Adams



Material Information includes important facts that may affect a buyer's decision to view or buy, such as tenure, restrictions, utilities, construction, and other key details. Full information for this property is available at [www.cooper-adams.com](http://www.cooper-adams.com). We may offer buyer services and receive referral benefits – details on request. All content is copyright Cooper Adams. Details and floor plans are for guidance only and don't form part of any contract. Measurements are maximums including bays and alcoves. Floor plan sizes are approximate. Images, maps and plans are not to scale. Appliances/services not tested. Cooper Adams Estates Ltd, Bishopstone. Reg No: 07127482. VAT No: 982847172.

Lettings | Sales | Free valuations | Land & New Homes | Mortgages

FULL DETAILS OF THE MATERIAL INFORMATION ARE ON OUR WEBSITE - VIEWING STRICTLY BY APPOINTMENT WITH COOPER ADAMS

FOR MORE PHOTOS AND TO BOOK A VIEWING VISIT OUR WEBSITE - Tel: 01903 791 792 - [www.cooper-adams.com](http://www.cooper-adams.com)