



Coppins The Thatchway, Angmering

Freehold

Impressive detached four double bedroom house • Three reception rooms • In and out driveway • Large double garage • South facing landscaped garden onto golf course • Private road • Chain free • For more information please visit [Cooper Adams website](#)

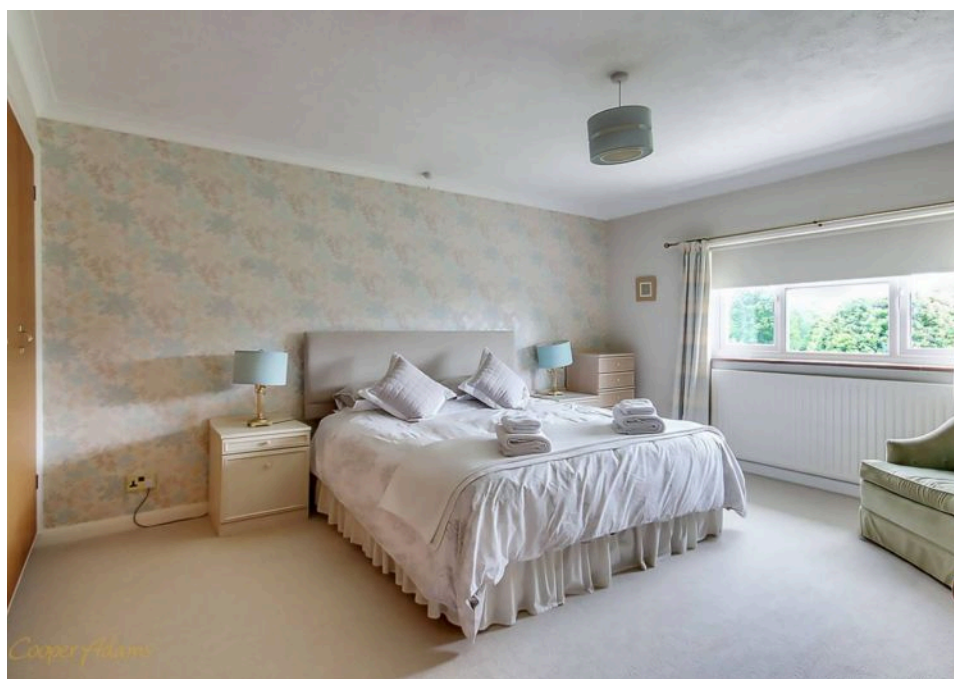
Cooper Adams

Situated in a prestigious and highly desirable location, this substantial detached four bedroom house backs onto Ham Manor golf course and offers an abundance of space, making it ideal for families. The ground floor comprises of a fantastic spacious entrance hall, a light-filled sitting room with a gas fire, a formal dining room, and a study/bedroom four, offering flexible use depending on your needs. The kitchen/breakfast room is perfect for family meals with a separate utility room and a downstairs cloakroom. The bright conservatory that is off the sitting room brings the outdoors in, offering a peaceful retreat and further extending the living area. Upstairs, the large main bedroom features an en-suite bathroom, while two additional double bedrooms provide ample space for family or guests, and there is also a sizeable family bathroom. There is also a substantial games room/lounge located above the double garage, adding valuable additional living space to the home or annexe for older children/elderly parents.

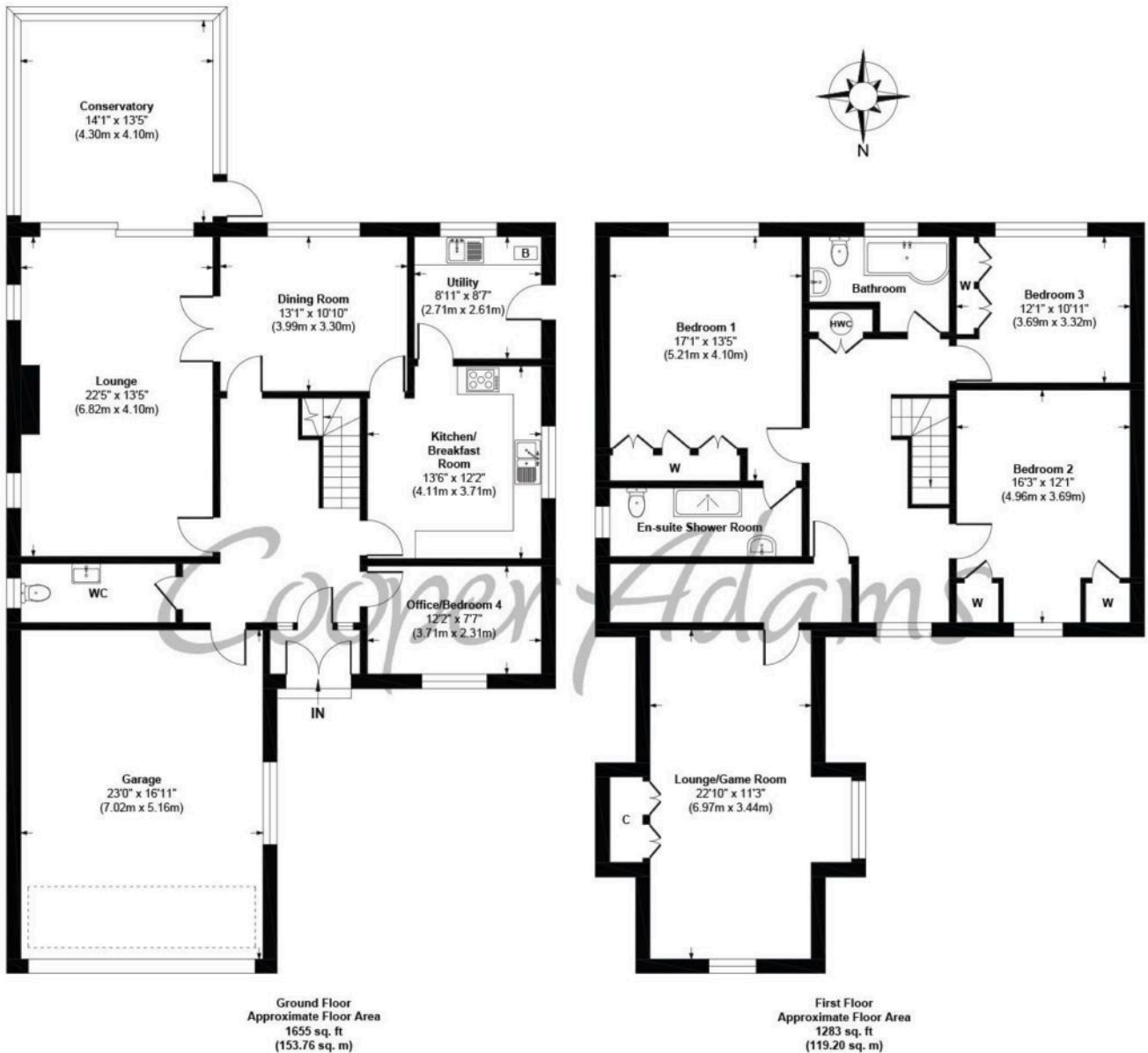
Outside, the property boasts a beautiful south-facing landscaped garden with direct access to a picturesque golf course perfect for those who enjoy outdoor living



Angmering, a charming village near the South Downs, offers shops, schools, a health club, and a golf course. Beaches are within 2 miles, and nearby shopping is available in Rustington and Worthing. Angmering station connects to London, Brighton, and more, with Gatwick 40 miles away and easy access to the A27 and A24 roads.



Cooper Adams



The Thatchway, Angmering, BN16 4HJ
Approx. Gross Internal Floor Area 2938 sq. ft / 272.96 sq. m

Illustration for identification purposes only, measurements are approximate, not to scale

Copyright © Cooper Adams



You can include any text here. The text can be modified upon generating your brochure.

Material Information includes important facts that may affect a buyer's decision to view or buy, such as tenure, restrictions, utilities, construction, and other key details. Full information for this property is available at www.cooper-adams.com. We may offer buyer services and receive referral benefits -- details on request. All content is copyright Cooper Adams. Details and floor plans are for guidance only and don't form part of any contract. Measurements are maximums including bays and alcoves. Floor plan sizes are approximate. Images, maps and plans are not to scale. Appliances/services not tested. Cooper Adams Estates Ltd, Bishopstone, Reg No: 01727482, VAT No: 982847172.

Lettings | Sales | Free valuations | Land & New Homes | Mortgages

FULL DETAILS OF THE MATERIAL INFORMATION ARE ON OUR WEBSITE - VIEWING STRICTLY BY APPOINTMENT WITH COOPER ADAMS

FOR MORE PHOTOS AND TO BOOK A VIEWING VISIT OUR WEBSITE - Tel: 01903 791 792 - www.cooper-adams.com