



St. Marys Drive, East Preston

Freehold

Detached bungalow with no onward chain ready for a swift and hassle-free move • Bright and spacious living areas with dual-aspect lounge, dining room, and conservatory overlooking the garden • Two generous double bedrooms including a principal bedroom with fitted wardrobe area • Two separate shower rooms ideal for guests or shared living flexibility • Detached garage and side access, plus built-in storage and potential to personalise throughout • For more information please visit the Cooper Adams website

Cooper Adams

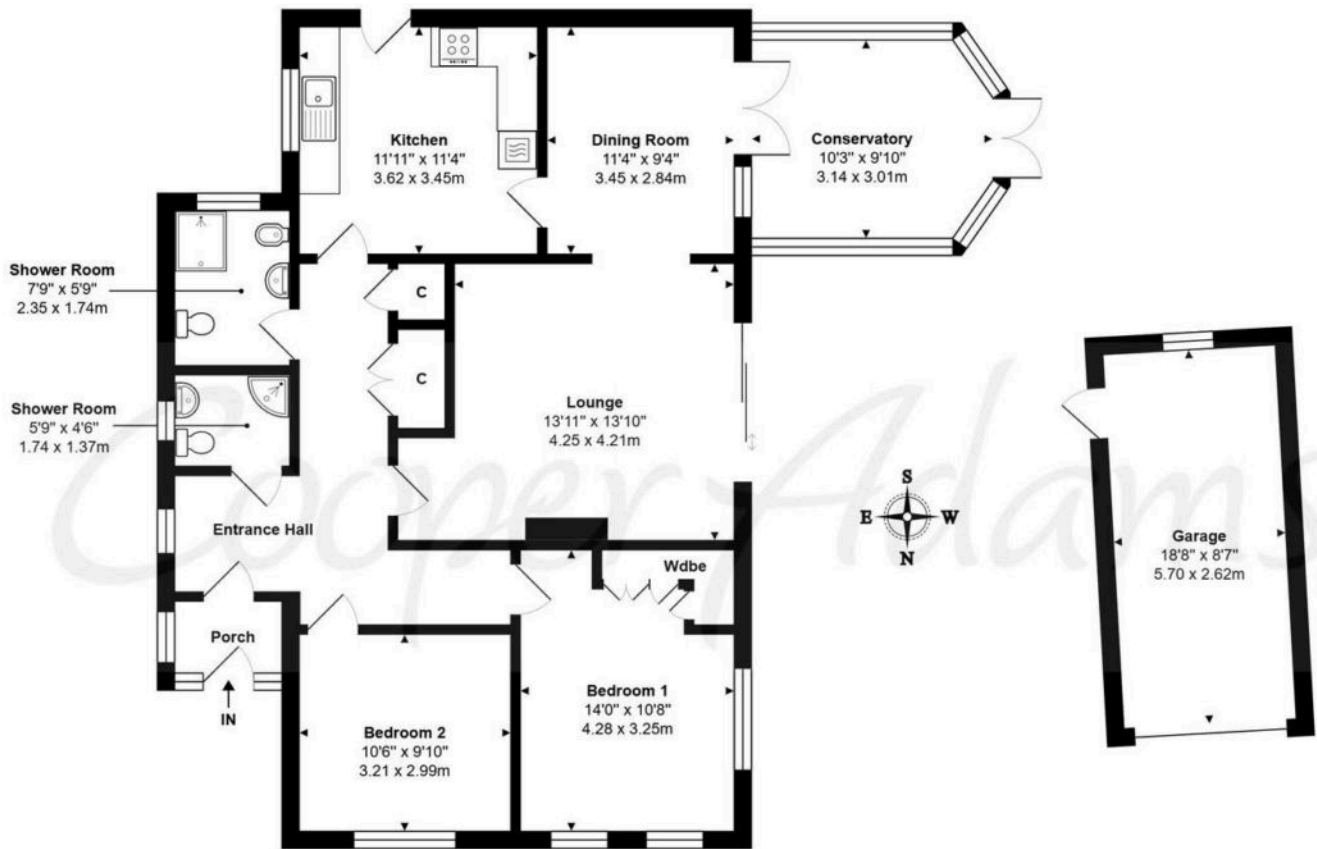
Spacious Detached Bungalow in Prime East Preston Location – No Onward Chain.

Located on sought-after St Marys Drive, this well-proportioned two-bedroom detached bungalow offers a fantastic opportunity for a smooth move. The property features a bright dual-aspect lounge flowing into the dining room and conservatory, creating a lovely connection to the garden. A separate kitchen offers good storage and worktop space. There are two double bedrooms, the principal with fitted wardrobes, and two shower rooms for added convenience. Additional benefits include a detached garage, side access, and built-in storage. Ideally positioned close to the village, seafront, and transport links, this home offers plenty of potential to personalise. Early viewings recommended.



East Preston, a charming seaside village in West Sussex, offers a strong sense of community with shops, restaurants, schools, and leisure clubs nearby. Its peaceful pebble shoreline is perfect for relaxing walks. Ideally located near the South Downs, it combines the best of country and seaside living.





St Marys Drive, East Preston, BN16 1JB

Total Approx. Floor Area 1300 ft² ... 120.7 m²

Whilst every attempt has been made to ensure the accuracy of the floor plan contained here, measurements are approximate and no responsibility is taken for any error, omission or mis-statement.
This plan is for illustrative purposes only and should be used as such by any prospective purchaser.
Prepared by Jlm 2025



Material information includes important facts that may affect a buyer's decision to view or buy, such as tenure, restrictions, utilities, construction, and other key details. Full information for this property is available at www.cooper-adams.com. We may offer buyer services and receive referral benefits - details on request. All content is copyright Cooper Adams. Details and floor plans are for guidance only and don't form part of any contract. Measurements are maximums including bays and alcoves. Floor plan sizes are approximate. Images, maps and plans are not to scale. Appliances/services not tested. Cooper Adams Estates Ltd, Bishopstone. Reg No: 07127482. VAT No: 962847172.

Lettings | Sales | Free valuations | Land & New Homes | Mortgages

FULL DETAILS OF THE MATERIAL INFORMATION ARE ON OUR WEBSITE - VIEWING STRICTLY BY APPOINTMENT WITH COOPER ADAMS

FOR MORE PHOTOS AND TO BOOK A VIEWING VISIT OUR WEBSITE - Tel: 01903 791 792 - www.cooper-adams.com