

## Chatsworth Close, Rustington, BN16 3ST

Freehold

Three Bedrooms with Built-in Storage • A Detached Family Home • Conservatory • Garage & Driveway • Located within a quiet Cul-de-Sac • Low-Maintenance Rear Garden • En-Suite to Primary Bedroom • Popular Parklands Development •  
Approx. 1344 sq. ft (124.9 sq. m)

*Cooper Adams*

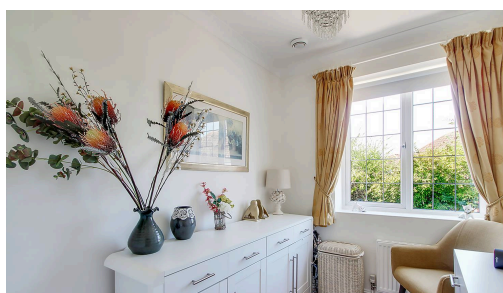
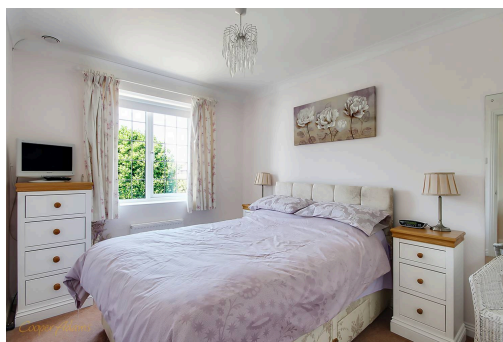


Located within a quiet cul-de-sac on the ever-popular Parklands development in Rustington, this attractive three-bedroom detached family home offers spacious and well-planned accommodation throughout. The ground floor features a bright and airy lounge that leads seamlessly into the conservatory, perfect for use as a second reception area, playroom or home office. The adjacent dining area flows into the kitchen with ample cupboard space and modern appliances, ideal for family living. There is also a ground floor cloakroom for convenience. Upstairs, all three bedrooms benefit from built-in storage, while the primary bedroom enjoys the added luxury of an en-suite shower room. A family bathroom serves the remaining bedrooms. Externally, the home boasts a west-facing, low-maintenance rear garden, a garage, and a private driveway providing off-road parking. Conveniently situated close to local schools, and transport links, this home is ideal for families or downsizers seeking a quiet yet comfortable lifestyle.

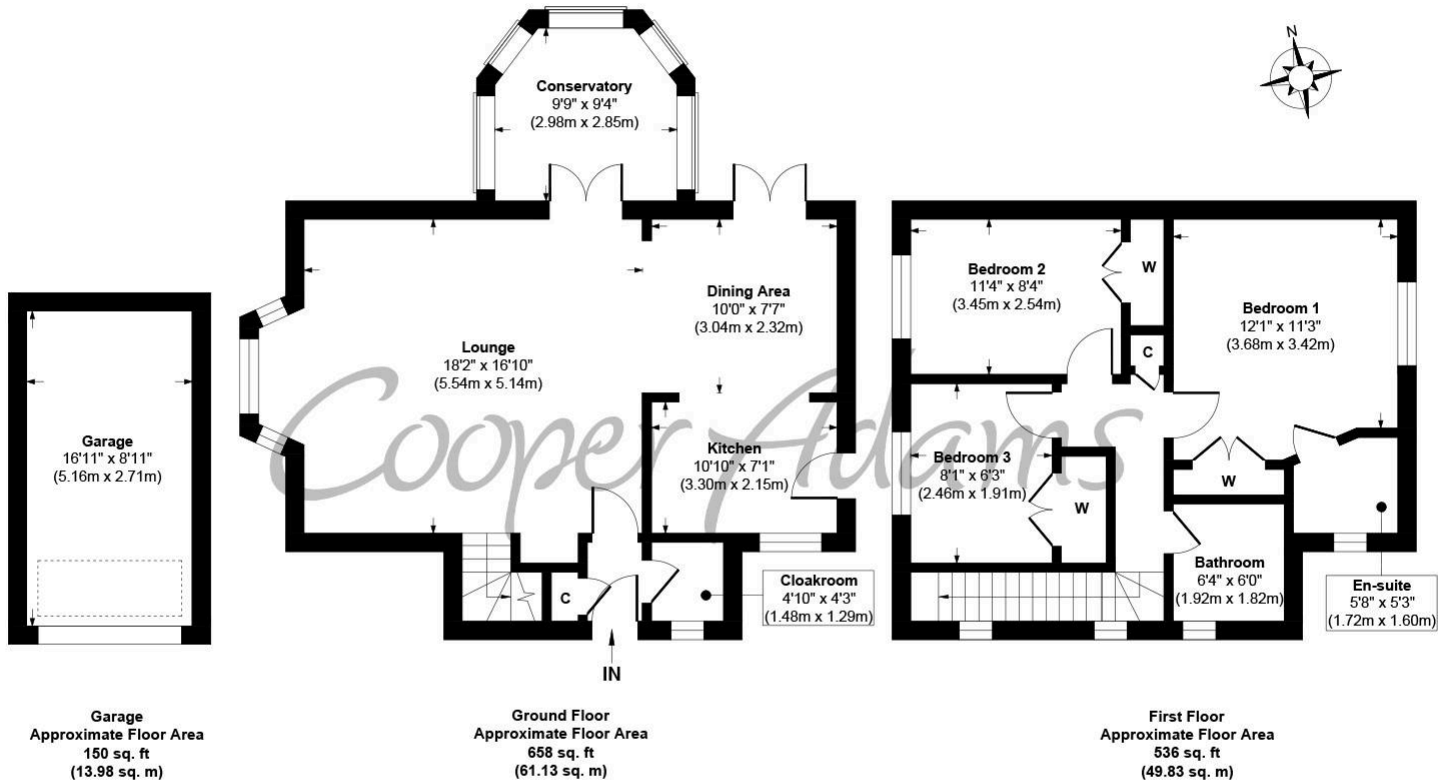
The seller requires a 'Reservation Agreement' to protect serious buyers as they proceed to exchange of contracts.



Rustington, a charming seaside village in West Sussex, offers a welcoming community, excellent shops, restaurants, and nearby leisure activities like sailing and golf. Its unspoiled pebble beach is perfect for peaceful walks, providing a serene escape just minutes away. Ideally located for all amenities, Rustington is a delightful place to live and unwind.



*Cooper Adams*



**Chatsworth Drive, Rustington**  
**Approx. Gross Internal Floor Area 1344 sq. ft / 124.94 sq. m**

Illustration for identification purposes only, measurements are approximate, not to scale

Copyright © Cooper Adams

Council Tax band: E, EPC Energy Efficiency Rating: C

Material Information includes important facts that may affect a buyer's decision to view or buy, such as tenure, restrictions, utilities, construction, and other key details. Full information for this property is available at [www.cooper-adams.com](http://www.cooper-adams.com). We may offer buyer services and receive referral benefits - details on request. All content is copyright Cooper Adams. Details and floor plans are for guidance only and don't form part of any contract. Measurements are maximums including bays and alcoves. Floor plan sizes are approximate. Images, maps and plans are not to scale. Appliances/services not tested. Cooper Adams Estates Ltd, Bishopstone. Reg No: 07127482. VAT No: 982847172.

Lettings | Sales | Free valuations | Land & New Homes | Mortgages

FULL DETAILS OF THE MATERIAL INFORMATION ARE ON OUR WEBSITE - VIEWING STRICTLY BY APPOINTMENT WITH COOPER ADAMS

FOR MORE PHOTOS AND TO BOOK A VIEWING VISIT OUR WEBSITE - Tel: 01903 791 792 - [www.cooper-adams.com](http://www.cooper-adams.com)