

## Harsfold Close, Rustington, BN16 2QL

Leasehold

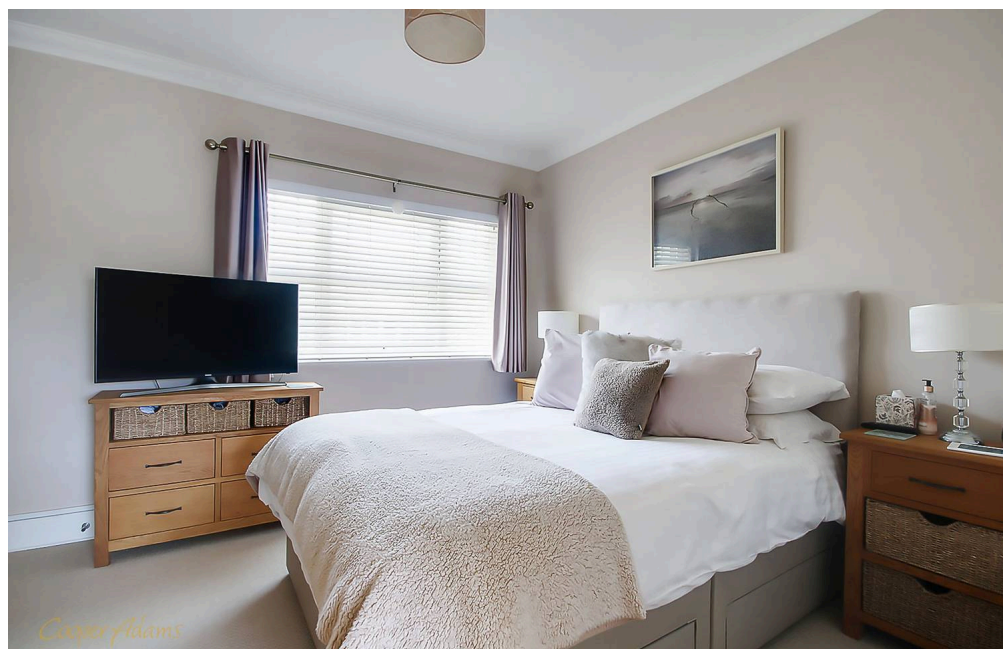
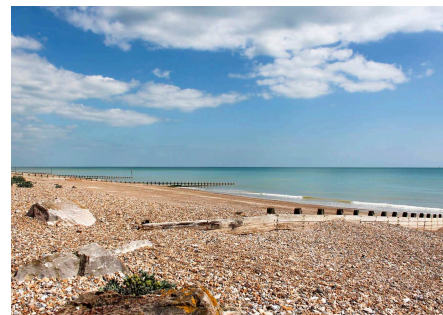
A Full Redecorated Top Floor Apartment • Two Double Bedrooms • LONG LEASE • South-Facing Juliet Balcony to Living Room  
 • Garage En-Bloc with Electric Door • Loft Space • Sought-After Development! • No Neighbours Above and Below •  
 Approximately 0.1 Mile to Rustington Beach! • Approx. 803 sq. ft (74.6 sq. m)

*Cooper Adams*

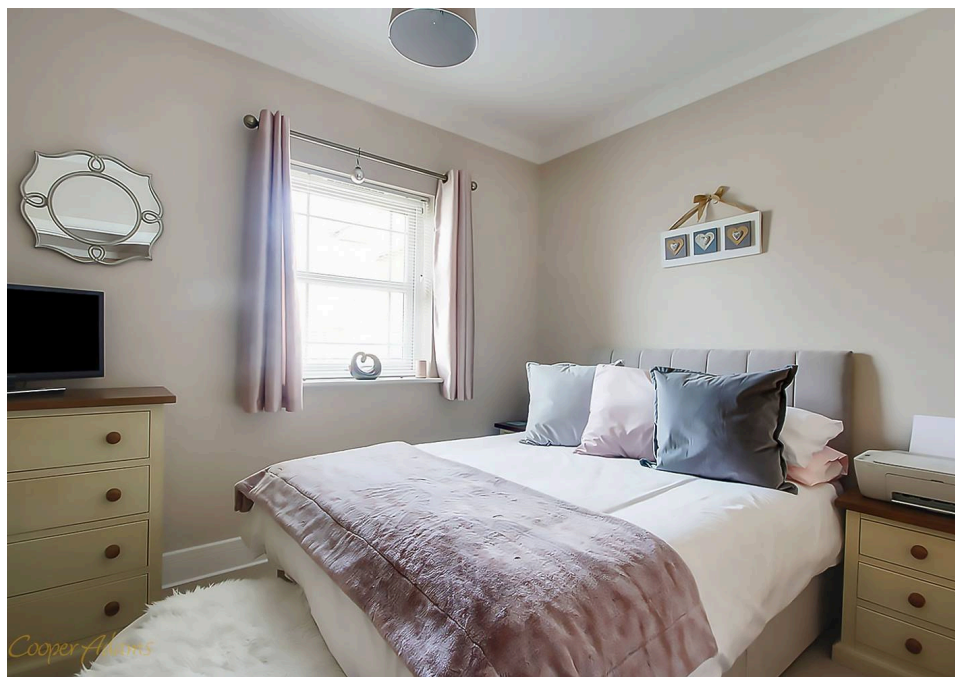
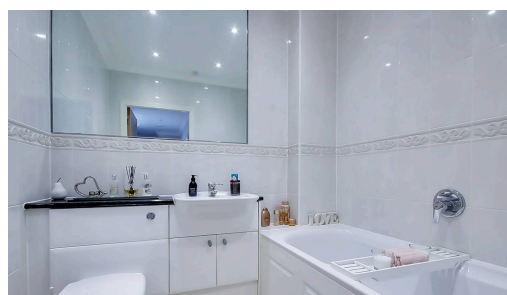


Welcome to this beautifully redecorated apartment, in the sought-after Oceanique Development - offering modern living with coastal charm. Featuring two spacious double bedrooms, both equipped with built-in storage, this home is perfect for those seeking style and practicality. The bright, south-facing living room opens onto a Juliet balcony, creating a light and airy ambiance. The sleek, modern kitchen comes fitted with integrated appliances, perfect for contemporary living and entertaining. With two well-appointed bathrooms and newly installed wooden flooring in the hallway, the property has been updated to a high standard. Further benefits include a long lease and a garage en-bloc for parking, making this property a convenient and appealing choice. Contact us today to arrange a viewing of this exceptional apartment!

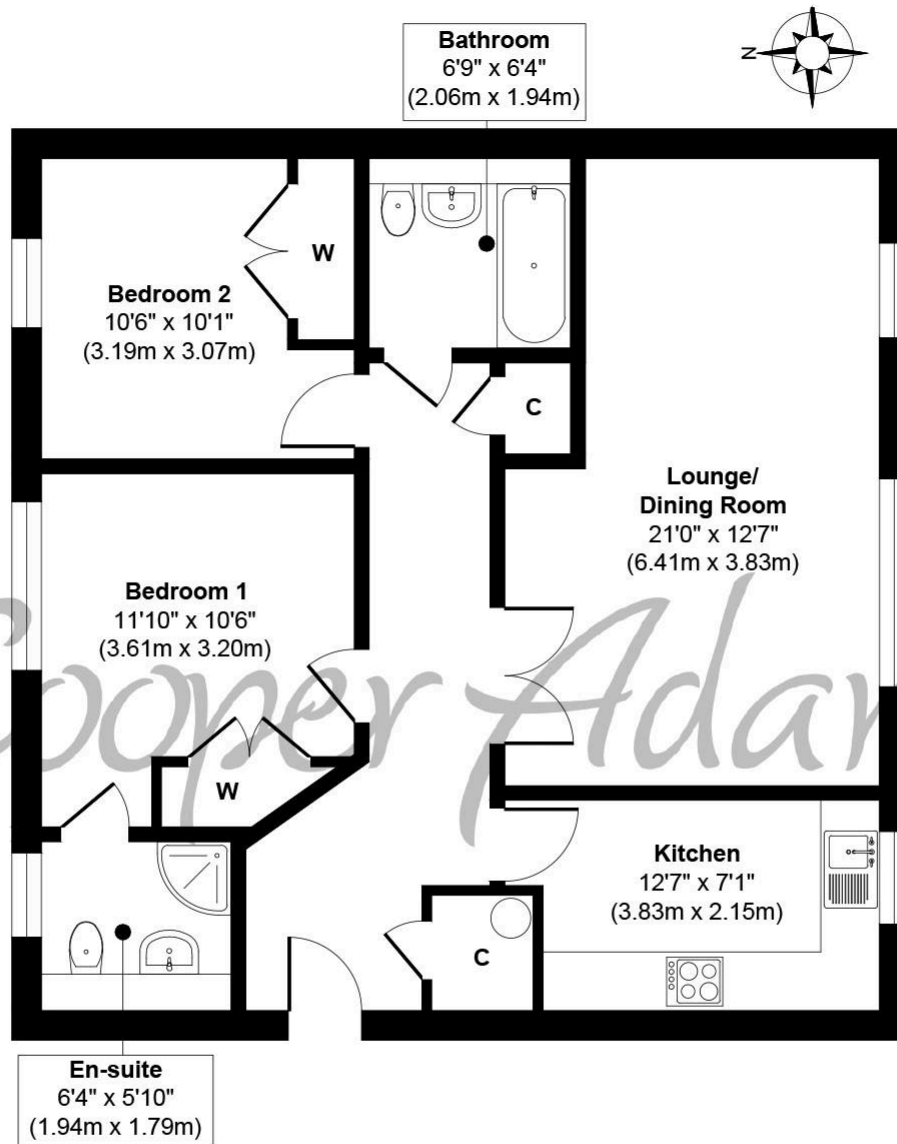
This property is "Legally Prepared." The seller requires a 'Reservation Agreement' to protect serious buyers as they proceed to exchange of contracts.



Rustington, a charming seaside village in West Sussex, offers a welcoming community, excellent shops, restaurants, and nearby leisure activities like sailing and golf. Its unspoiled pebble beach is perfect for peaceful walks, providing a serene escape just minutes away. Ideally located for all amenities, Rustington is a delightful place to live and unwind.



*Cooper Adams*



**Approximate Floor Area**  
**803 sq. ft**  
**(74.61 sq. m)**

**Harsfold Close, Rustington**  
**Approx. Gross Internal Floor Area 803 sq. ft / 74.61 sq. m**

Illustration for identification purposes only, measurements are approximate, not to scale

Copyright © Cooper Adams

You can include any text here. The text can be modified upon generating your brochure.

This material is protected by laws of copyright which is owned by Cooper Adams. Whilst every attempt has been made to ensure the accuracy of these details and floor plan contained here, they do not constitute any offer or contract or part thereof. All measurements are always maximum measurements into bay windows, alcoves and for L shaped rooms. No guarantee is given on total square footage taken from the floor plan. The details, pictures, maps and floor plans are for illustration purposes only and not to scale. Any appliances and/or services have not been tested. Cooper Adams is a trading name of Cooper Adams Estates Limited registered at Bishopstone. Registered in England and Wales. Our registered number is 07127482. Our VAT Number is 982847172.

Lettings | Sales | Free valuations | Land & New Homes | Mortgages

FULL DETAILS OF THE MATERIAL INFORMATION ARE ON OUR WEBSITE - VIEWING STRICTLY BY APPOINTMENT WITH COOPER ADAMS

FOR MORE PHOTOS AND TO BOOK A VIEWING VISIT OUR WEBSITE - Tel: 01903 791 792 - [www.cooper-adams.com](http://www.cooper-adams.com)