

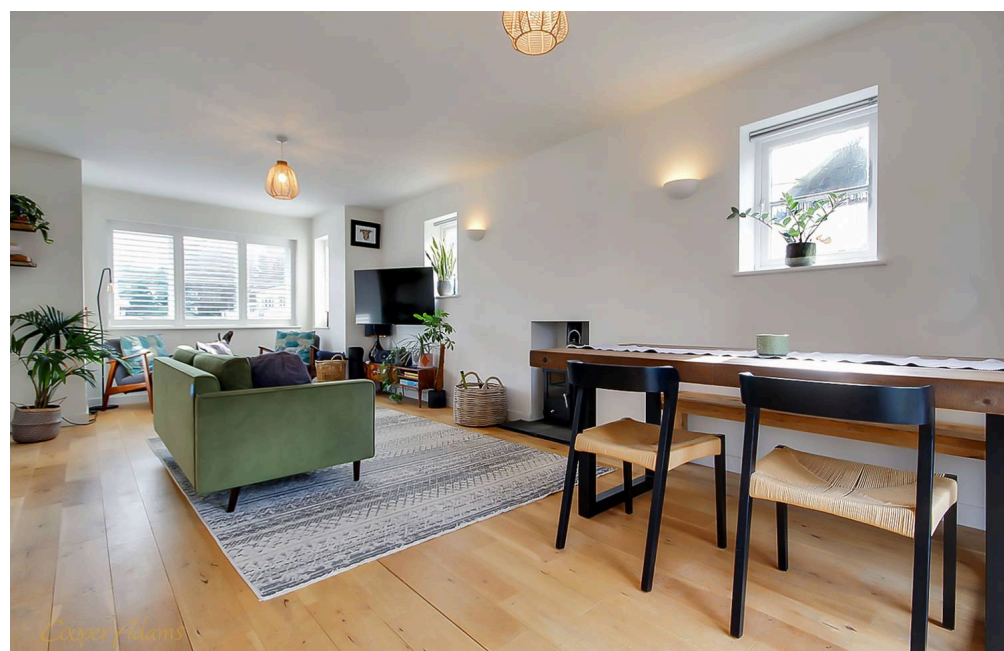
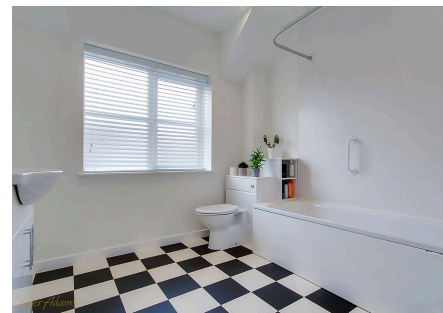
Matrons Cottages Sea Road, East Preston

Freehold

Newly built two-bedroom semi-detached cottage • Chain-free • West-facing rear garden • Located in the heart of East Preston Village • Allocated off-street parking • For more information please visit the Cooper Adams website

Cooper Adams

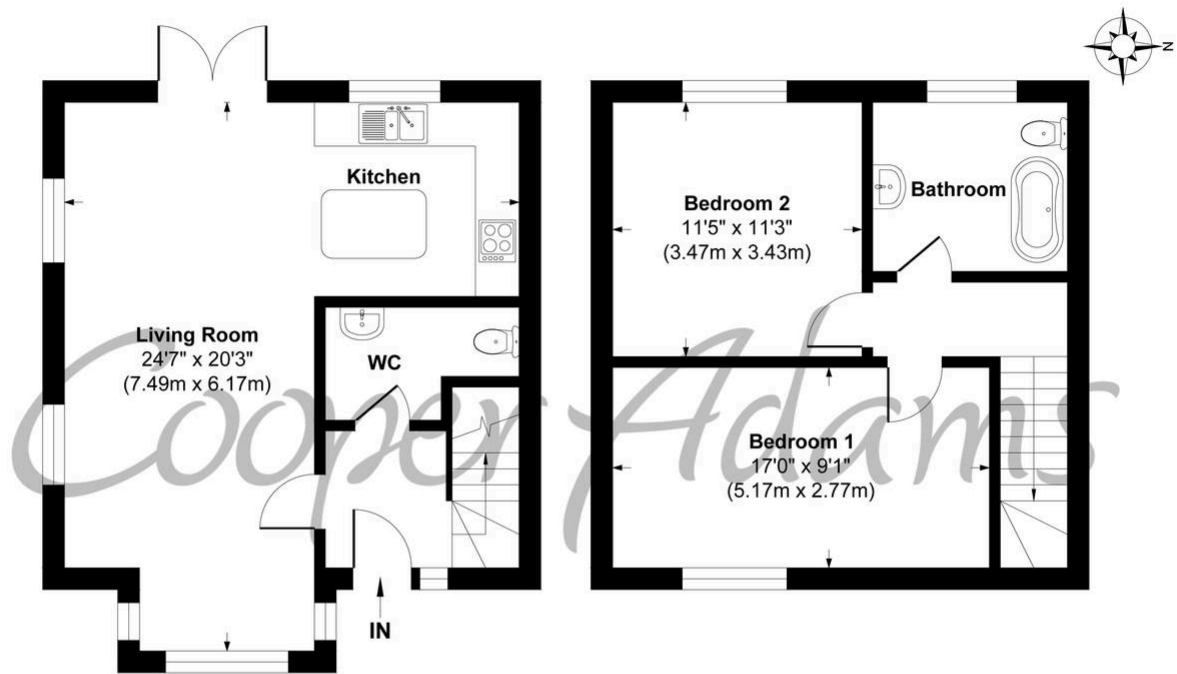
This chain-free home is ideally situated in a sought-after village location, just a few minutes' walk from the local shops and East Preston beach. This immaculate two-bedroom, semi-detached house has been beautifully maintained since its construction in 2018. The spacious living room is an inviting area, complete with a cosy fireplace, perfect for chilly winter evenings. The open-plan living and dining space seamlessly flows into the modern kitchen, making it an excellent setting for entertaining. Double doors lead out to the garden, providing an ideal space for alfresco dining. The rear garden, with its westerly aspect, floods the kitchen and charming lounge with natural light. Upstairs, you'll find two generously sized double bedrooms and a contemporary family bathroom. The property also benefits from designated off-road parking.



East Preston, a charming seaside village in West Sussex, offers a strong sense of community with shops, restaurants, schools, and leisure clubs nearby. Its peaceful pebble shoreline is perfect for relaxing walks. Ideally located near the South Downs, it combines the best of country and seaside living.



Cooper Adams



Ground Floor
Approximate Floor Area
459 sq. ft
(42.61 sq. m)

First Floor
Approximate Floor Area
429 sq. ft
(39.87 sq. m)

Matrons Cottages, East Preston
Approx. Gross Internal Floor Area 888 sq. ft / 82.48 sq. m

Illustration for identification purposes only, measurements are approximate, not to scale

Copyright © Cooper Adams

Council Tax band: D / Tenure: Freehold / EPC Energy Efficiency Rating: C / EPC Environmental Impact Rating: B

This material is protected by laws of copyright which is owned by Cooper Adams. Whilst every attempt has been made to ensure the accuracy of these details and floor plan contained here, they do not constitute any offer or contract or part thereof. All measurements are always maximum measurements into bay windows, alcoves and for L shaped rooms. No guarantee is given on total square footage taken from the floor plan. The details, pictures, maps and floor plans are for illustration purposes only and not to scale. Any appliances and/or services have not been tested. Cooper Adams is a trading name of Cooper Adams Estates Limited registered at Bishopstone. Registered in England and Wales. Our registered number is 07127482. Our VAT Number is 982847172.

Lettings | Sales | Free valuations | Land & New Homes | Mortgages

FULL DETAILS OF THE MATERIAL INFORMATION ARE ON OUR WEBSITE - VIEWING STRICTLY BY APPOINTMENT WITH COOPER ADAMS

FOR MORE PHOTOS AND TO BOOK A VIEWING VISIT OUR WEBSITE - Tel: 01903 791 792 - www.cooper-adams.com