



Heritage Place Broadmark Lane, Rustington, BN16 2GY

Leasehold

A Luxury Two-Bedroom Penthouse Apartment • Direct Sea Views • CHAIN FREE • Balcony and Roof Terrace • Garage and Resident Parking • Re-Decorated Throughout • Approx. 0.7 Miles to Rustington Village • Approx. 1094 sq. ft (102 sq. m)

Cooper Adams

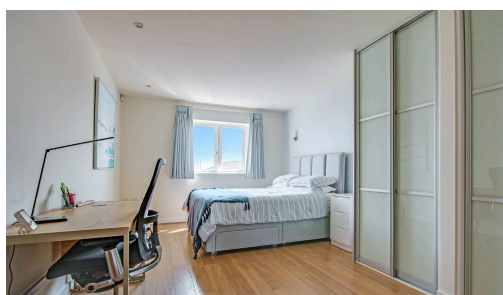
Bask in sunshine! Come and look at this impressive top floor penthouse apartment in Rustington. With a large private roof terrace and an additional south-facing balcony, this truly is a unique apartment. With direct sea views of the Sussex coast and situated in the art-deco 'Heritage Place' this is a wonderful opportunity to have the life you have always dreamed of. Grab your bathers and pop over the road to the beach, or stroll back up to village for a coffee. What are you waiting for?

This property is "Legally Prepared." Cooper Adams has gathered key documents, including the title, plans, property forms, warranties, and EPC. Buyers must request these before offering.

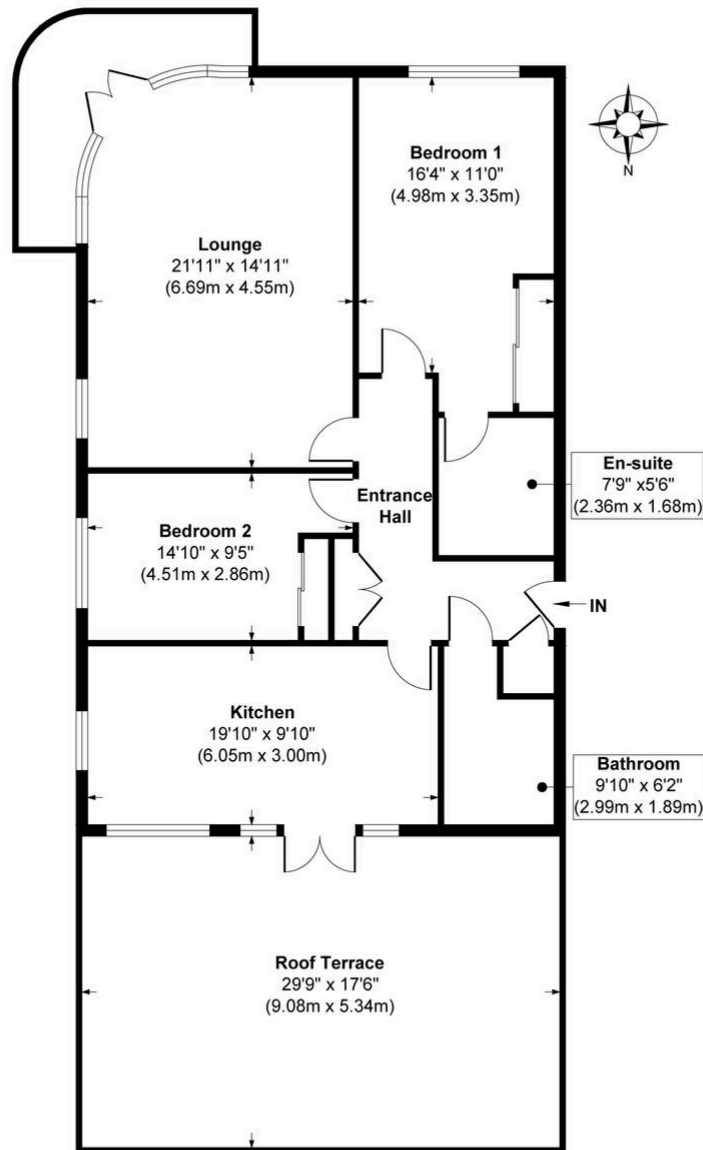
The seller requires a 'Reservation Agreement' to protect serious buyers as they proceed to exchange of contracts.



Rustington, a charming seaside village in West Sussex, offers a welcoming community, excellent shops, restaurants, and nearby leisure activities like sailing and golf. Its unspoiled pebble beach is perfect for peaceful walks, providing a serene escape just minutes away. Ideally located for all amenities, Rustington is a delightful place to live and unwind.



Heritage Place, Broadmark Lane



Floor Plan
Approximate Floor Area
1094 sq. ft
(101.60 sq. m)

Approx. Gross Internal Floor Area 1094 sq. ft / 101.60 sq. m

Illustration for identification purposes only, measurements are approximate, not to scale.
Copyright © Cooper Adams

Council Tax band: F, EPC Energy Efficiency Rating: C, EPC Environmental Impact Rating: B

This material is protected by laws of copyright which is owned by Cooper Adams. Whilst every attempt has been made to ensure the accuracy of these details and floor plan contained here, they do not constitute any offer or contract or part thereof. All measurements are always maximum measurements into bay windows, alcoves and for L shaped rooms. No guarantee is given on total square footage taken from the floor plan. The details, pictures, maps and floor plans are for illustration purposes only and not to scale. Any appliances and/or services have not been tested. Cooper Adams is a trading name of Cooper Adams Estates Limited registered at Bishopstone. Registered in England and Wales. Our registered number is 07127482. Our VAT Number is 982847172.

Lettings | Sales | Free valuations | Land & New Homes | Mortgages

FULL DETAILS OF THE MATERIAL INFORMATION ARE ON OUR WEBSITE - VIEWING STRICTLY BY APPOINTMENT WITH COOPER ADAMS

FOR MORE PHOTOS AND TO BOOK A VIEWING VISIT OUR WEBSITE - Tel: 01903 791 792 - www.cooper-adams.com