

Marama Gardens, Rustington, BN16 2ND

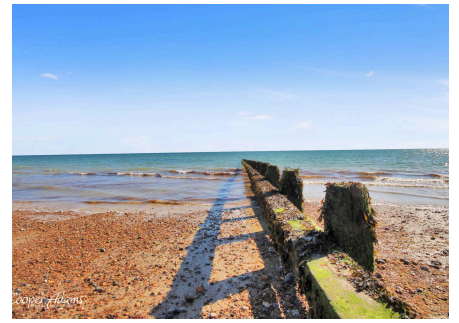
Share of Freehold

A Top Floor Apartment • Two Double Bedrooms • Share of Freehold with Long Lease! • South-Facing Living Room with Sea Views • Garage En-Bloc • Lift Access • Fantastic Location along Rustington Beach • Under One Mile to Rustington Village • Great Commuter Links Nearby • Approx. 731 sq. ft (67.9 sq. m)

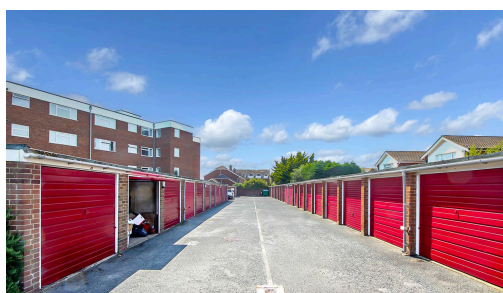
Cooper Adams

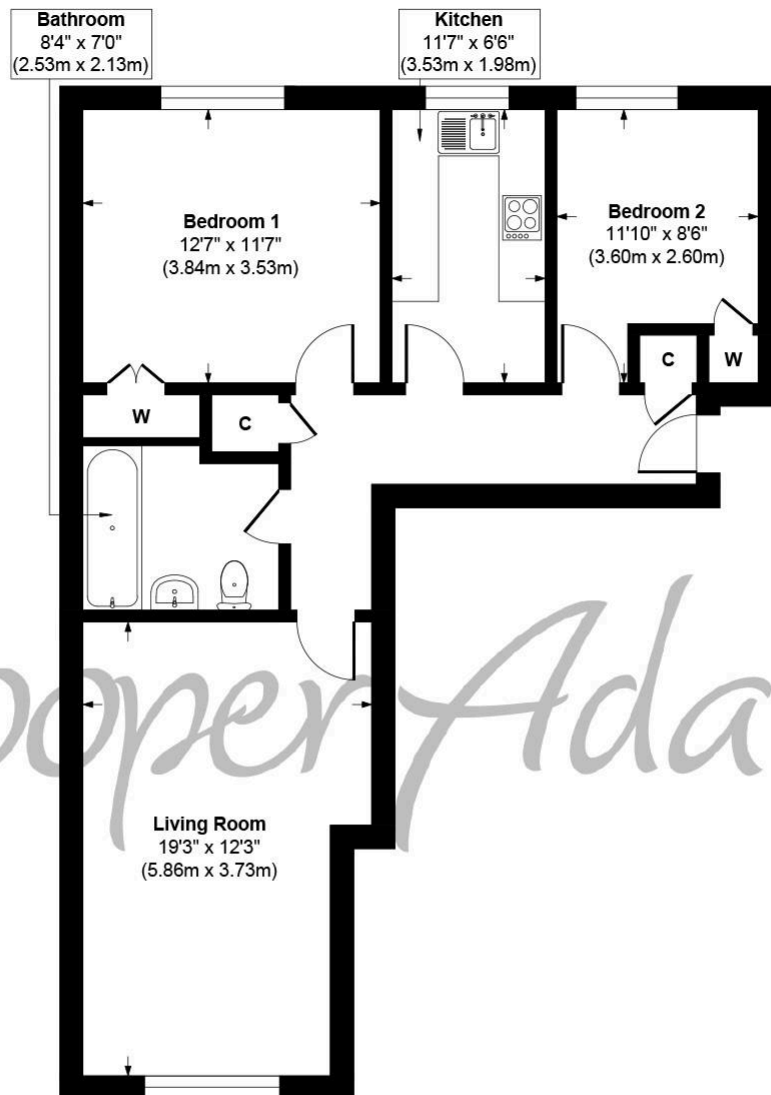
This superb two-bedroom top-floor apartment with a share of freehold, is located along the Rustington's stunning beach! This property features a bright south-facing living room with sea views, two spacious double bedrooms, and convenient built-in storage. The apartment benefits from a long lease and is complemented by a garage en-bloc, offering additional storage. Its fantastic location along the seafront places you within walking distance of the beach and just under a mile away from local amenities, making this property an ideal coastal retreat. Don't miss this opportunity to own a seafront apartment in one of Rustington's prime locations. Contact us today for further details or to arrange a viewing!

The seller requires a 'Reservation Agreement' to protect serious buyers as they proceed to exchange of contracts.



Rustington, a charming seaside village in West Sussex, offers a welcoming community, excellent shops, restaurants, and nearby leisure activities like sailing and golf. Its unspoiled pebble beach is perfect for peaceful walks, providing a serene escape just minutes away. Ideally located for all amenities, Rustington is a delightful place to live and unwind.





Approximate Floor Area
731 sq. ft
(67.91 sq. m)

Marama Gardens, Rustington
Approx. Gross Internal Floor Area 731 sq. ft / 67.91 sq. m

Illustration for identification purposes only, measurements are approximate, not to scale

Copyright © Cooper Adams

Council Tax band: C, EPC Energy Efficiency Rating: D

This material is protected by laws of copyright which is owned by Cooper Adams. Whilst every attempt has been made to ensure the accuracy of these details and floor plan contained here, they do not constitute any offer or contract or part thereof. All measurements are always maximum measurements into bay windows, alcoves and for L shaped rooms. No guarantee is given on total square footage taken from the floor plan. The details, pictures, maps and floor plans are for illustration purposes only and not to scale. Any appliances and/or services have not been tested. Cooper Adams is a trading name of Cooper Adams Estates Limited registered at Bishopstone. Registered in England and Wales. Our registered number is 07127482. Our VAT Number is 982847172.

Lettings | Sales | Free valuations | Land & New Homes | Mortgages

FULL DETAILS OF THE MATERIAL INFORMATION ARE ON OUR WEBSITE - VIEWING STRICTLY BY APPOINTMENT WITH COOPER ADAMS

FOR MORE PHOTOS AND TO BOOK A VIEWING VISIT OUR WEBSITE - Tel: 01903 791 792 - www.cooper-adams.com