



Sea Road, East Preston, BN16

Freehold

Central village location – just metres from shops and a short walk to the sea • Immaculate throughout with recently renovated kitchen and bathrooms • West-facing garden with attractive flint wall providing privacy • Three double bedrooms arranged across three floors • Offered chain free for a straightforward move

*Cooper Adams*

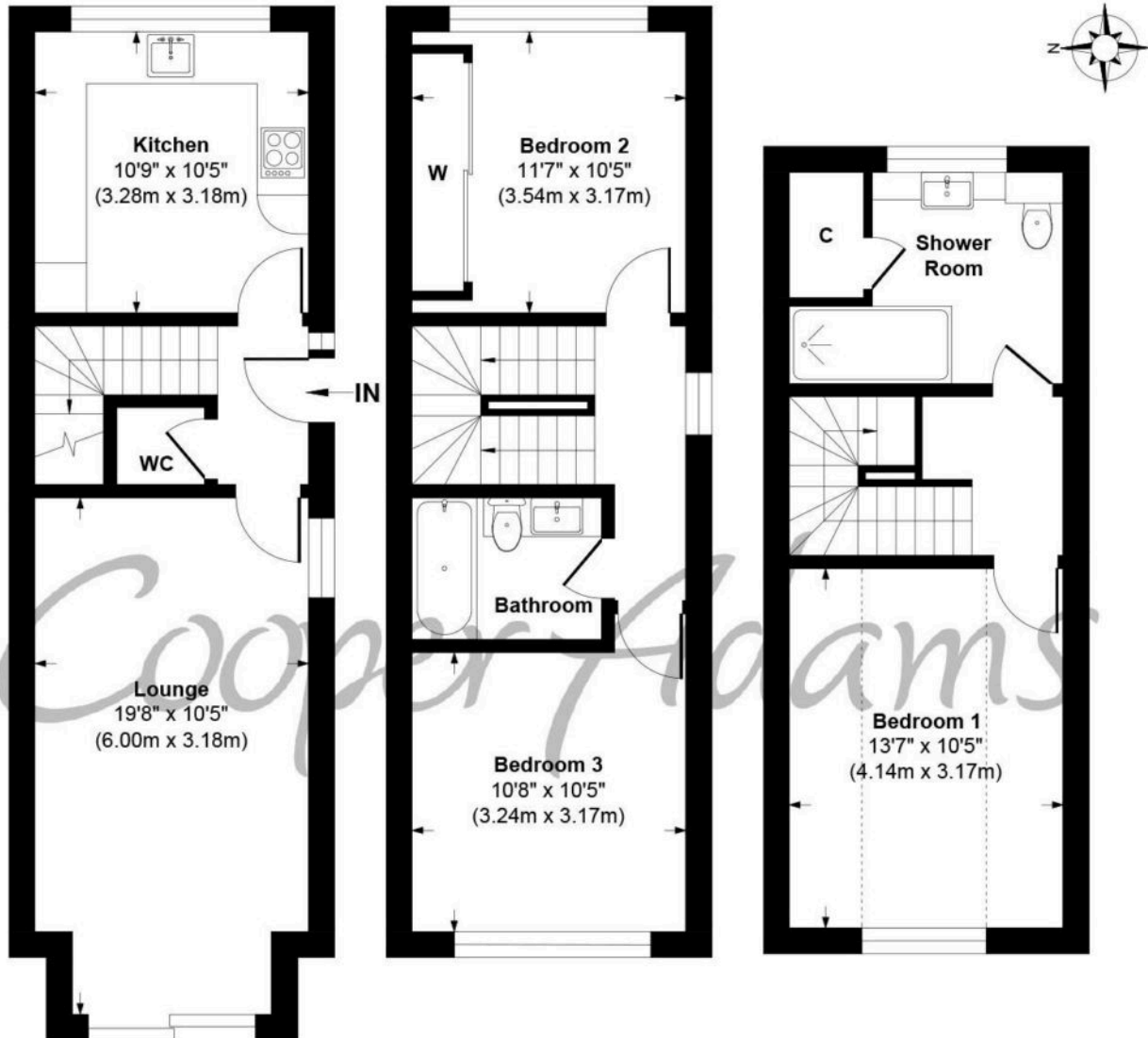


Perfectly positioned in the heart of East Preston village, just a few metres from the shops and within walking distance of the sea, this three-storey townhouse combines space, style and convenience. The property has been recently renovated to a high standard and is presented in immaculate condition throughout. To the front is a spacious, well-designed kitchen, while to the rear a comfortable sitting room and dining area opens directly onto the west-facing garden – a private space enhanced by a striking flint wall, creating an attractive and secluded backdrop. Across the upper floors there are three double bedrooms and two modern bathrooms, offering flexible accommodation for family or guests. A downstairs cloakroom adds further practicality. To the front, a private driveway provides off-road parking. This chain-free home is ready for its next chapter and offers a rare opportunity to secure a turn-key property in such a central coastal location.



East Preston, a charming seaside village in West Sussex, offers a strong sense of community with shops, restaurants, schools, and leisure clubs nearby. Its peaceful pebble shoreline is perfect for relaxing walks. Ideally located near the South Downs, it combines the best of country and seaside living.





**Ground Floor**  
Approximate Floor Area  
381 sq. ft  
(35.43 sq. m)

**First Floor**  
Approximate Floor Area  
357 sq. ft  
(33.20 sq. m)

**Second Floor**  
Approximate Floor Area  
300 sq. ft  
(27.89 sq. m)

**Windlesham Cottages, Sea Road, East Preston, BN16 1GJ**  
**Approx. Gross Internal Floor Area 1038 sq. ft / 96.52 sq. m**

Illustration for identification purposes only, measurements are approximate, not to scale

Copyright © Cooper Adams



Material information includes important facts that may affect a buyer's decision to view or buy, such as tenure, restrictions, utilities, construction, and other key details. Full information for this property is available at [www.cooper-adams.com](http://www.cooper-adams.com). We may offer buyer services and receive referral benefits - details on request. All content is copyright Cooper Adams. Details and floor plans are for guidance only and don't form part of any contract. Measurements are maximums including bays and alcoves. Floor plan sizes are approximate. Images, maps and plans are not to scale. Appliances/services not tested. Cooper Adams Estates Ltd, Bishopstone. Reg No: 07127482. VAT No: 962847172.

Lettings | Sales | Free valuations | Land & New Homes | Mortgages

FULL DETAILS OF THE MATERIAL INFORMATION ARE ON OUR WEBSITE - VIEWING STRICTLY BY APPOINTMENT WITH COOPER ADAMS

FOR MORE PHOTOS AND TO BOOK A VIEWING VISIT OUR WEBSITE - Tel: 01903 791 792 - [www.cooper-adams.com](http://www.cooper-adams.com)