

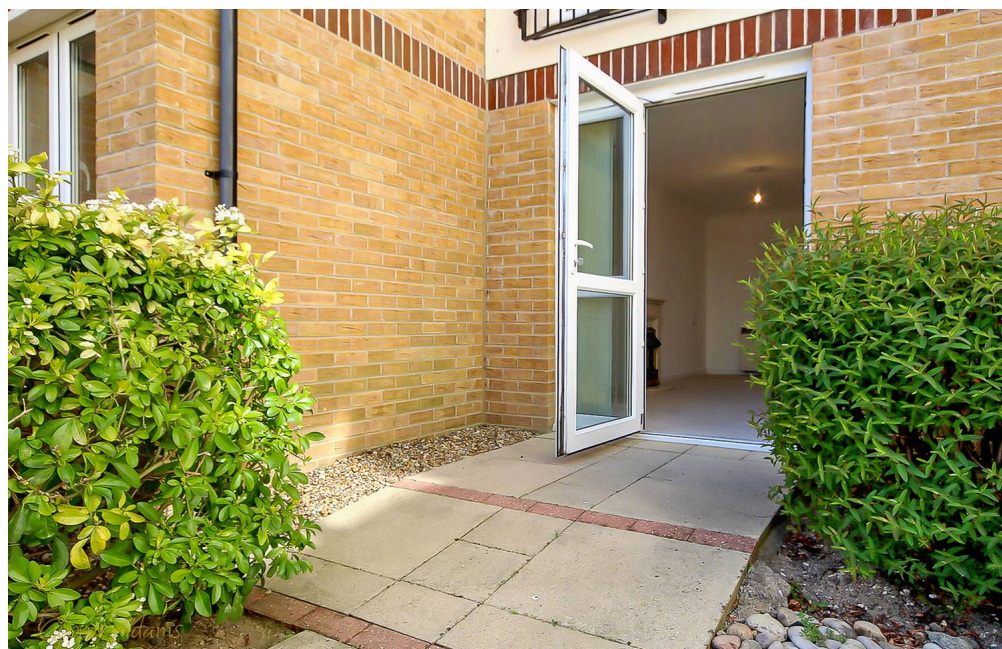
## Milliers Court, Worthing Road, East Preston

### Leasehold

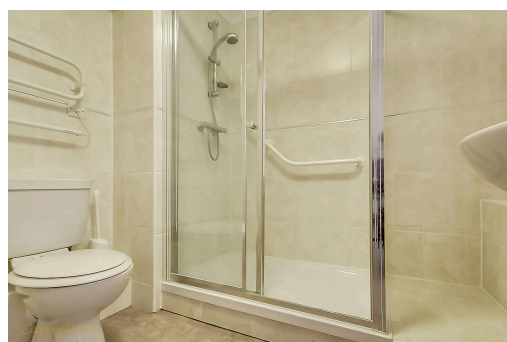
Enjoy a generous living space with direct access to beautifully maintained communal gardens • Just a short stroll to the train station, local bus routes and shops for everyday convenience • 24-hour emergency care-line and an on-site live-in house manager for added security and support • Includes a sociable residents' lounge, laundry room and a comfortable guest suite for visiting family • Designed for those aged 60+ (or 55+ for couples), offering a peaceful and friendly community environment • For more information please go to the Cooper Adams website

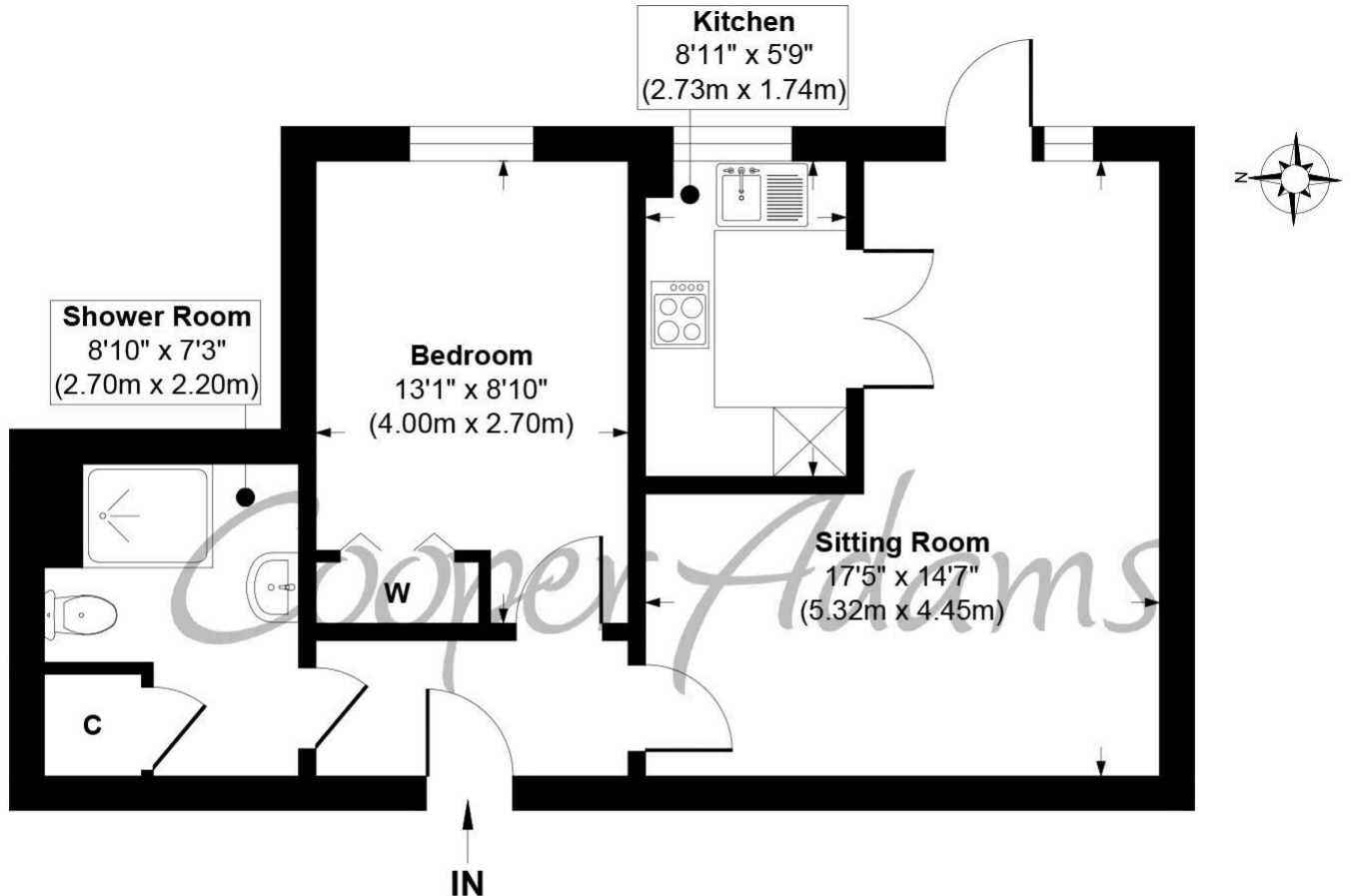
*Cooper Adams*

A beautifully presented lower ground floor retirement apartment offering comfort, security, and convenience in equal measure. This well-maintained home features a generously sized lounge with direct access to the lovely communal gardens — perfect for relaxing or enjoying a cup of tea outdoors. The spacious double bedroom offers a peaceful retreat, making this apartment an ideal choice for those seeking a calm and low-maintenance lifestyle. Residents enjoy the peace of mind that comes with a 24-hour emergency care-line, a friendly live-in house manager, and excellent shared facilities including a welcoming communal lounge, laundry room, and a guest suite for visiting family and friends. Located just moments from the train station, local bus routes and a range of shops, everything you need is within easy reach. Age restriction applies: Single occupants must be 60+, or 55+ if purchasing as a couple.



East Preston, a charming seaside village in West Sussex, is nestled just south of the South Downs National Park. It exudes a strong sense of community, often described as Living in the country by the sea.





**Approximate Floor Area**  
482 sq. ft  
(44.83 sq. m)

**Milliers Court, Worthing Road, East Preston, West Sussex, BN16 1AR**

**Approx. Gross Internal Floor Area 482 sq. ft / 44.83 sq. m**

Illustration for identification purposes only, measurements are approximate, not to scale

Copyright © Cooper Adams



This material is protected by laws of copyright which is owned by Cooper Adams. Whilst every attempt has been made to ensure the accuracy of these details and floor plan contained here, they do not constitute any offer or contract or part thereof. All measurements are always maximum measurements into bay windows, alcoves and for L shaped rooms. No guarantee is given on total square footage taken from the floor plan. The details, pictures, maps and floor plans are for illustration purposes only and not to scale. Any appliances and/or services have not been tested. Cooper Adams is a trading name of Cooper Adams Estates Limited registered at Bishopstone. Registered in England and Wales. Our registered number is 07127482. Our VAT Number is 982847172.

Lettings | Sales | Free valuations | Land & New Homes | Mortgages

FULL DETAILS OF THE MATERIAL INFORMATION ARE ON OUR WEBSITE - VIEWING STRICTLY BY APPOINTMENT WITH COOPER ADAMS

FOR MORE PHOTOS AND TO BOOK A VIEWING VISIT OUR WEBSITE - Tel: 01903 791 792 - [www.cooper-adams.com](http://www.cooper-adams.com)