

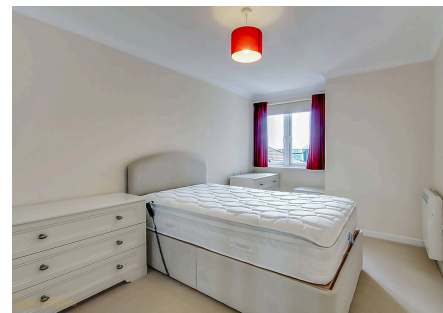
Milliers Court Worthing Road, East Preston

Leasehold

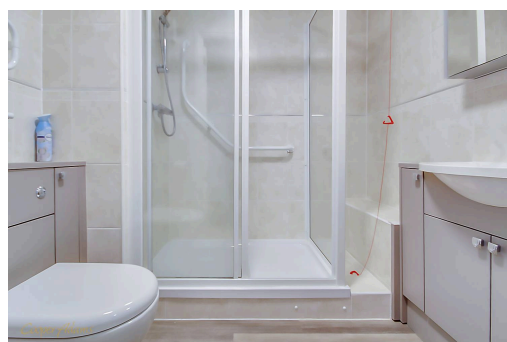
Bright and airy second-floor home with views over landscaped communal gardens. • Excellent location just moments from Angmering train station, local bus routes, shops, and a doctor's surgery (150 metres away). • Age-exclusive living for occupants aged 60+ (or 55+ for a partner), offering a quiet and supportive community. • Peace of Mind Living – 24-hour emergency care-line and live-in house manager on site. • Great communal facilities with residents enjoy a lounge, laundry room, guest suite, and well-maintained gardens. • Offered chain-free – ready for immediate occupation.

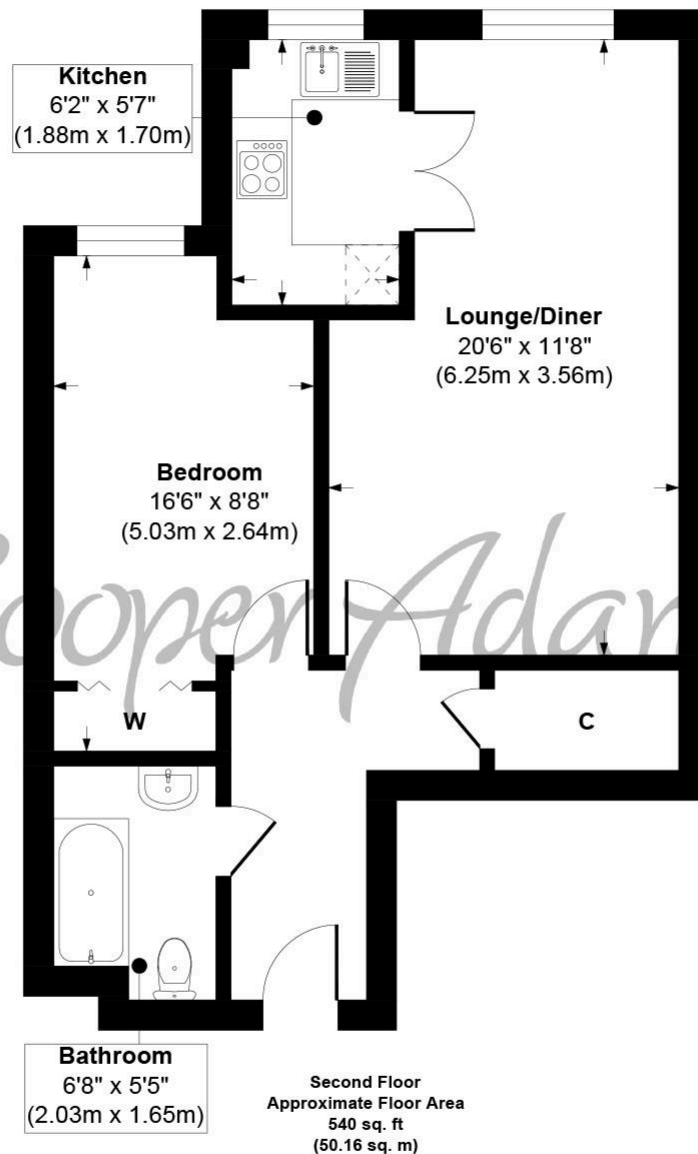
Cooper Adams

Chain-Free & Ready to Move In! This south-facing second-floor retirement apartment offers lovely views over landscaped gardens. The light-filled lounge is perfect for relaxing, and the modern kitchen (refitted in 2018) features quality NEFF and BOSCH appliances. The bathroom was updated in 2021, and upgraded electric radiators add comfort and efficiency. A lift is nearby for easy access, and the spacious double bedroom completes the well-laid-out interior. Set in a sought-after development with a 24-hour care-line, live-in manager, communal lounge, laundry, guest suite, and excellent transport links—plus a doctor's surgery just 150m away. For ages 60+ (or 55+ for a partner).



East Preston, a charming seaside village in West Sussex, is nestled just south of the South Downs National Park. It exudes a strong sense of community, often described as 'Living in the country by the sea.'





Milliers Court Worthing Road, East Preston, West Sussex, BN16 1AR

Approx. Gross Internal Floor Area 540 sq. ft / 50.16 sq. m

Illustration for identification purposes only, measurements are approximate, not to scale.

Copyright © Cooper Adams



Material Information includes important facts that may affect a buyer's decision to view or buy, such as tenure, restrictions, utilities, construction, and other key details. Full information for this property is available at www.cooper-adams.com. We may offer buyer services and receive referral benefits – details on request. All content is copyright Cooper Adams. Details and floor plans are for guidance only and don't form part of any contract. Measurements are maximums including bays and alcoves. Floor plan sizes are approximate. Images, maps and plans are not to scale. Appliances/services not tested. Cooper Adams Estates Ltd, Bishopstone. Reg No: 07127482. VAT No: 982847172.

Lettings | Sales | Free valuations | Land & New Homes | Mortgages

FULL DETAILS OF THE MATERIAL INFORMATION ARE ON OUR WEBSITE - VIEWING STRICTLY BY APPOINTMENT WITH COOPER ADAMS

FOR MORE PHOTOS AND TO BOOK A VIEWING VISIT OUR WEBSITE - Tel: 01903 791 792 - www.cooper-adams.com