

Cresswell Square, Angmering, BN16 4PX

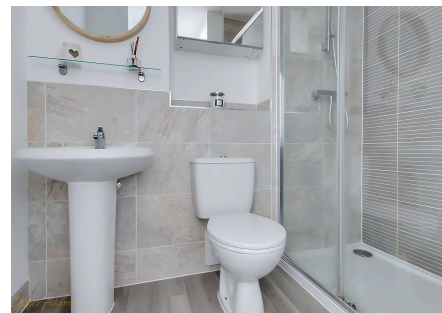
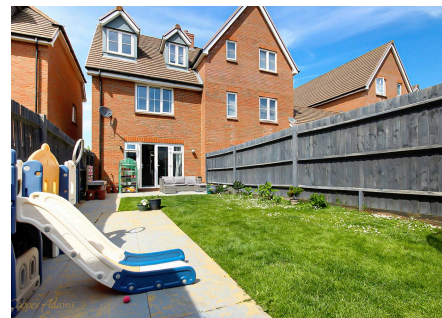
Freehold

Stylish and immaculate three-bedroom townhouse • South-facing garden ideal for entertaining • Modern family home • Master suite (double bedroom, en-suite, dressing area) • Two en-suite shower rooms • Two allocated parking spaces • Prime position overlooking the green • For more information visit the Cooper-Adams website

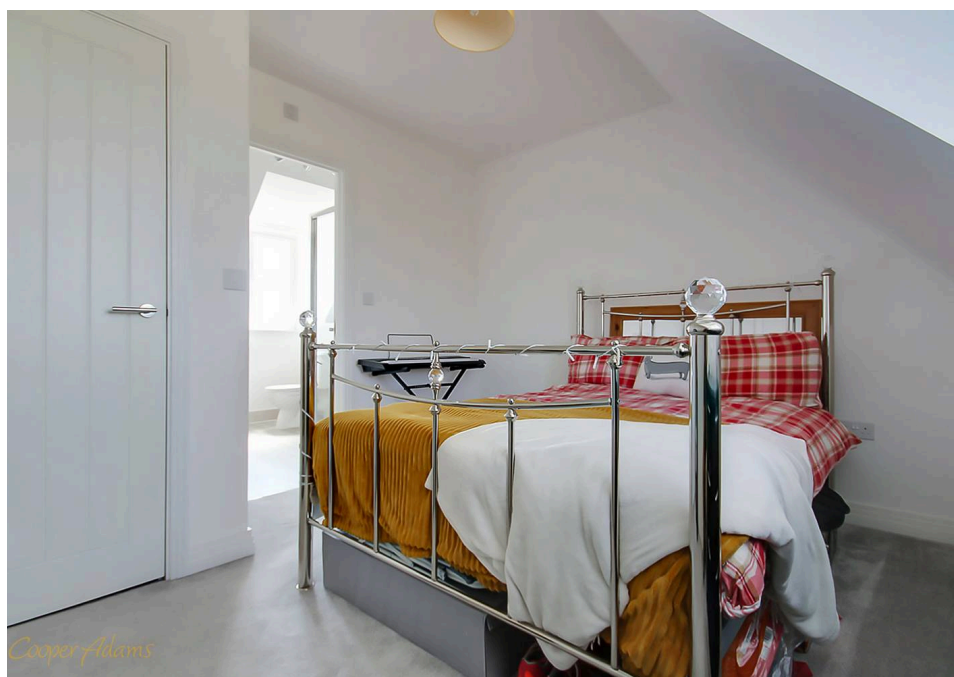
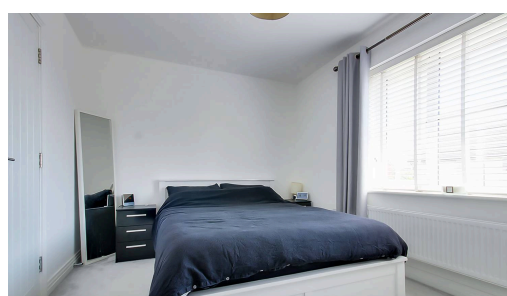
Cooper Adams

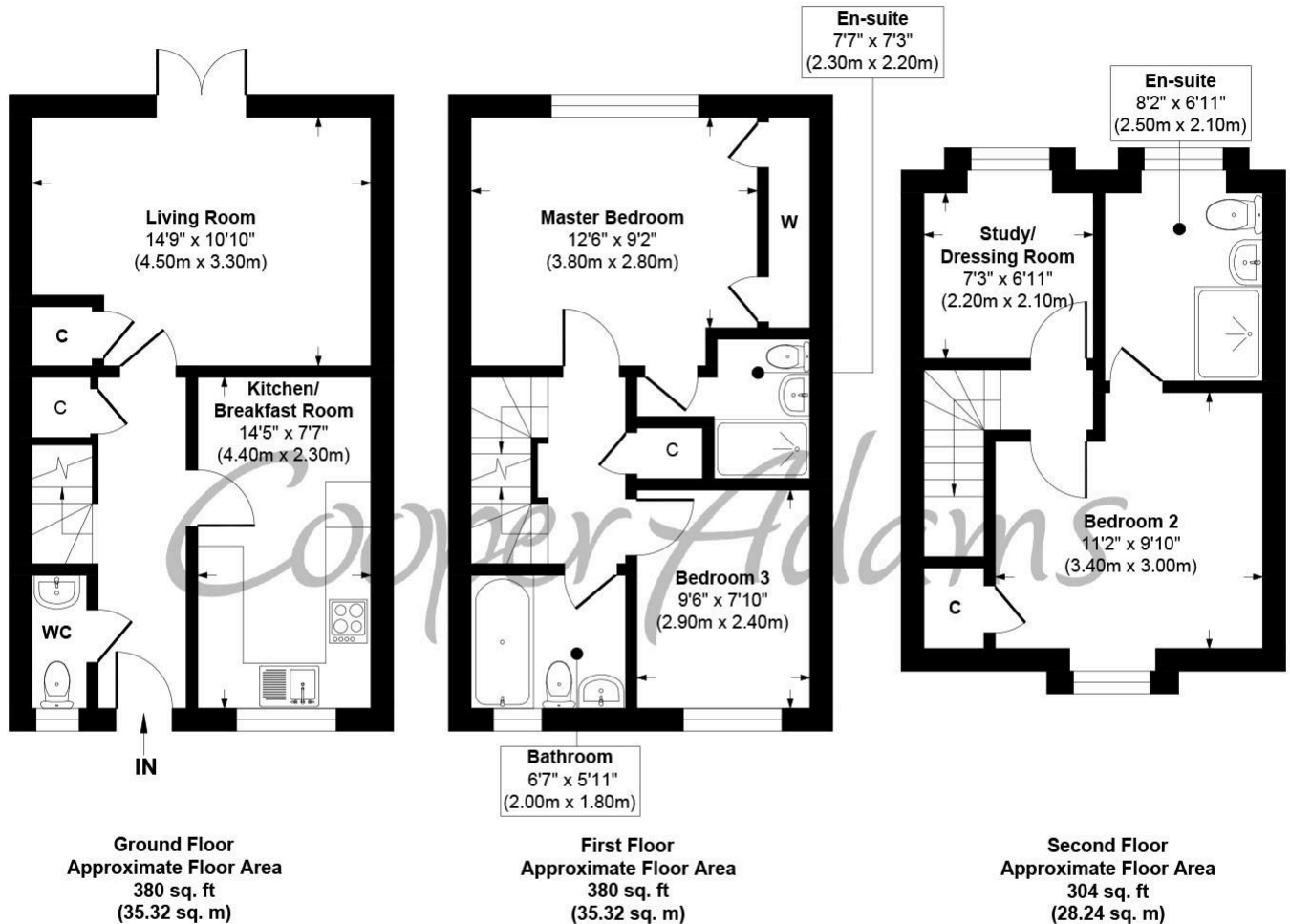
Tucked away in the popular Cresswell Park development in picturesque Angmering, this stylish semi-detached townhouse offers spacious, flexible living across three well-designed floors. Beautifully presented, it features three generous double bedrooms, including a luxurious top-floor suite with an en-suite shower room and a versatile walk-in wardrobe or study, ideal for remote work or a private retreat. The ground floor boasts a sleek, fully equipped kitchen with integrated appliances and a dedicated dining area, while the bright rear living room opens onto a sunny, south-facing landscaped garden, perfect for relaxing or entertaining. The first floor includes two further double bedrooms, one with its own en-suite, plus a modern family bathroom. Finished to a high standard throughout, the home also includes two allocated parking spaces for added convenience.

This property is "Legally Prepared." Cooper Adams has gathered key documents, including the title, plans, property forms, warranties, and EPC. Buyers must request these before offering.



Angmering, a charming village near the South Downs, offers shops, schools, a health club, and a golf course. Beaches are within 2 miles, and nearby shopping is available in Rustington and Worthing. Angmering station connects to London, Brighton, and more, with Gatwick 40 miles away and easy access to the A27 and A24 roads.





20 Cresswell Square, Angmering, West Sussex, BN16 4PX
Approx. Gross Internal Floor Area 1064 sq. ft / 98.88 sq. m

Illustration for identification purposes only, measurements are approximate, not to scale

Copyright © Cooper Adams



This material is protected by laws of copyright which is owned by Cooper Adams. Whilst every attempt has been made to ensure the accuracy of these details and floor plan contained here, they do not constitute any offer or contract or part thereof. All measurements are always maximum measurements into bay windows, alcoves and for L shaped rooms. No guarantee is given on total square footage taken from the floor plan. The details, pictures, maps and floor plans are for illustration purposes only and not to scale. Any appliances and/or services have not been tested. Cooper Adams is a trading name of Cooper Adams Estates Limited registered at Bishopsstone. Registered in England and Wales. Our registered number is 07127482. Our VAT Number is 982847172.

Lettings | Sales | Free valuations | Land & New Homes | Mortgages

FULL DETAILS OF THE MATERIAL INFORMATION ARE ON OUR WEBSITE - VIEWING STRICTLY BY APPOINTMENT WITH COOPER ADAMS

FOR MORE PHOTOS AND TO BOOK A VIEWING VISIT OUR WEBSITE - Tel: 01903 791 792 - www.cooper-adams.com