



Stanhope Road, Littlehampton, BN17 6AQ

Freehold

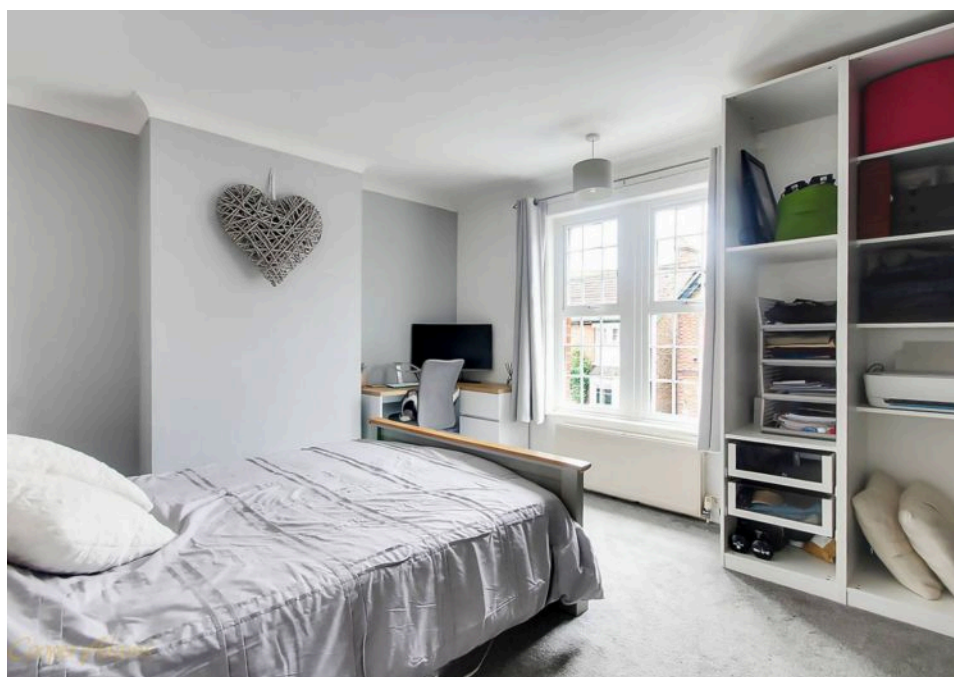
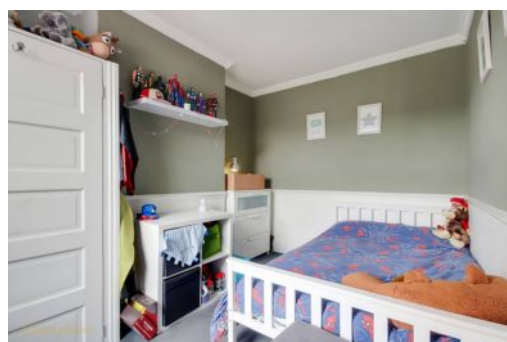
A Beautifully Modernised Victorian Home • Two Double Bedrooms • Mid-Terrace House • Modern Kitchen with Utility Area • Additional Loft Room • High Ceilings • Low Maintenance Landscaped Rear Garden • Large Family Bathroom with separate Shower and Bath • Local Schools and Parks Nearby for Families • Approx. 1077 sq. ft (100 sq. m)

Cooper Adams

This beautifully modernised Victorian home seamlessly blends timeless character with modern convenience. The sleek kitchen is complemented by a practical utility area, perfect for a busy household. Feature fireplaces in the dining and living rooms, along with a cozy electric fire and high ceilings throughout, add charm and warmth. Upstairs, you'll find two generously sized double bedrooms and a spacious family bathroom with both a separate shower and bath. Ideally situated for families, this home is just a short walk from local schools and parks, providing a fantastic environment for children to play and grow.



Rustington, a charming seaside village in West Sussex, offers a welcoming community, excellent shops, restaurants, and nearby leisure activities like sailing and golf. Its unspoiled pebble beach is perfect for peaceful walks, providing a serene escape just minutes away. Ideally located for all amenities, Rustington is a delightful place to live and unwind.





Ground Floor
Approximate Floor Area
526 sq. ft
(48.89 sq. m)

First Floor
Approximate Floor Area
419 sq. ft
(38.95 sq. m)

Loft
Approximate Floor Area
132 sq. ft
(12.29 sq. m)

Stanhope Road
Approx. Gross Internal Floor Area 1077 sq. ft / 100.13 sq. m

Illustration for identification purposes only, measurements are approximate, not to scale

Copyright © Cooper Adams

Council Tax band: B, EPC Energy Efficiency Rating: E, EPC Environmental Impact Rating: E

This material is protected by laws of copyright which is owned by Cooper Adams. Whilst every attempt has been made to ensure the accuracy of these details and floor plan contained here, they do not constitute any offer or contract or part thereof. All measurements are always maximum measurements into bay windows, alcoves and for L shaped rooms. No guarantee is given on total square footage taken from the floor plan. The details, pictures, maps and floor plans are for illustration purposes only and not to scale. Any appliances and/or services have not been tested. Cooper Adams is a trading name of Cooper Adams Estates Limited registered at Bishopstone. Registered in England and Wales. Our registered number is 07127482. Our VAT Number is 962847172.

Lettings | Sales | Free valuations | Land & New Homes | Mortgages

FULL DETAILS OF THE MATERIAL INFORMATION ARE ON OUR WEBSITE - VIEWING STRICTLY BY APPOINTMENT WITH COOPER ADAMS

FOR MORE PHOTOS AND TO BOOK A VIEWING VISIT OUR WEBSITE - Tel: 01903 791 792 - www.cooper-adams.com