



Norfolk Road, Littlehampton, BN17 5HE

Freehold

A Four-Bedroom Townhouse • Garage and Driveway Parking • Juliet Balcony • Primary Bedroom with En-Suite Shower Room
 • Spacious Kitchen/Diner • Utility Room • Situated Within Walking Distance to Littlehampton's Beach and Amenities • Approx.
 1356 sq. ft (125.9 sq. m)

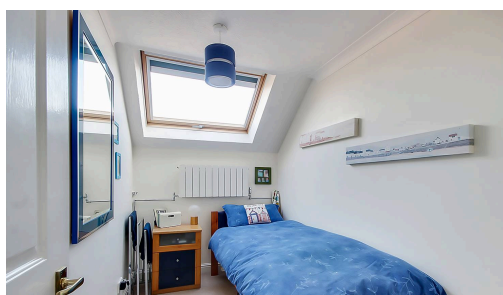
Cooper Adams

This versatile four-bedroom townhouse offers a comfortable and practical layout, ideal for busy families on the go. The ground floor features a utility room at the rear, a study/bedroom with French doors leading out onto the patio, a garage and additional storage. On the first floor, the spacious kitchen/diner provides plenty of cupboard and worktop space, making it perfect for family meals or entertaining guests. Opposite, the bright and airy living room boasts French doors leading to a Juliet balcony, while a convenient cloakroom completes this level. The second floor hosts three bedrooms, including two doubles. The primary bedroom features built-in storage and an en-suite shower room, while the family bathroom offers a bath, wash basin, and WC. Enhancing its appeal, this townhouse is ideally located within walking distance of Littlehampton's beach, offering the opportunity to enjoy daily strolls along the coast.

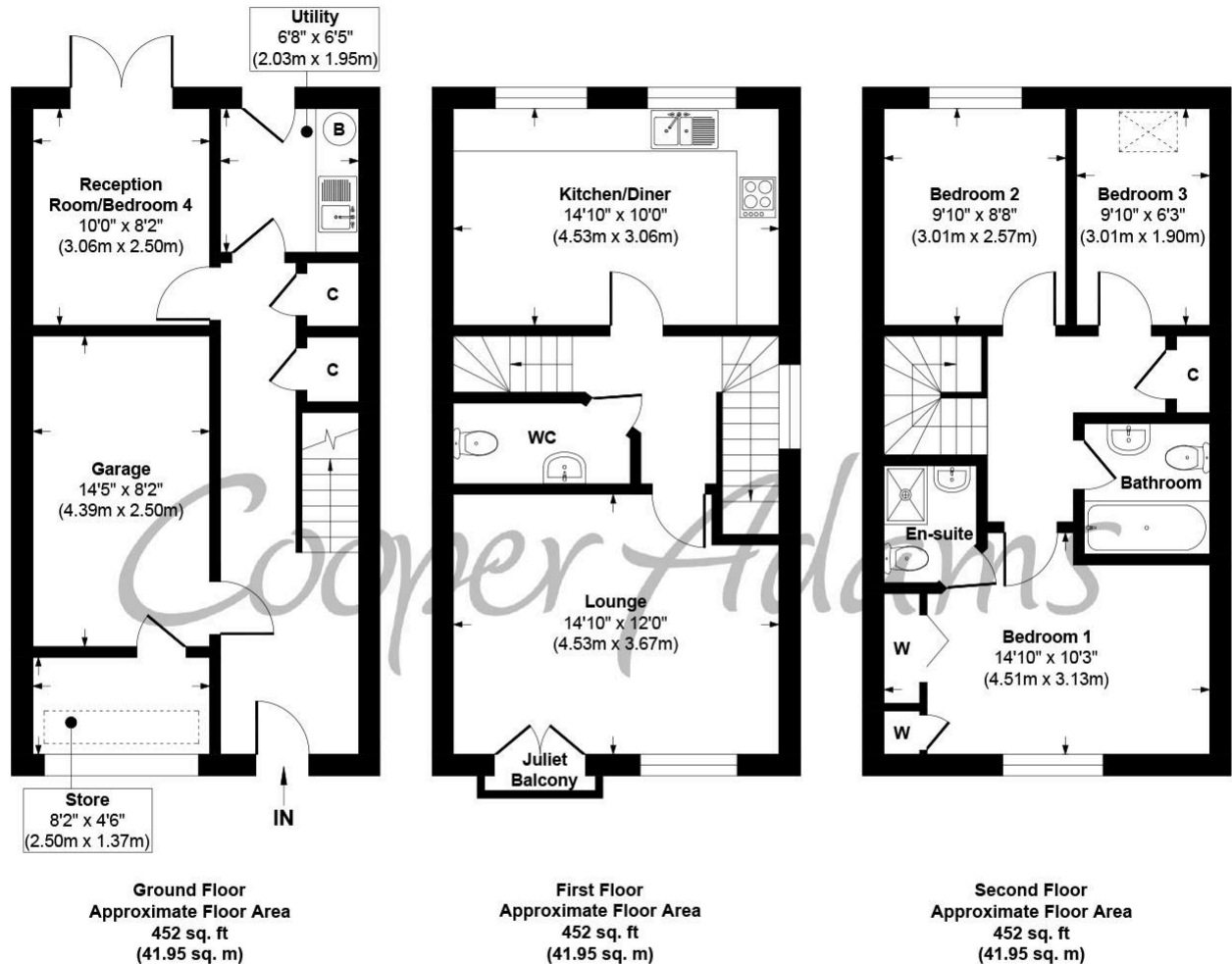
The seller requires a 'Reservation Agreement' to protect serious buyers as they proceed to exchange of contracts.



Littlehampton, a vibrant seaside town at the mouth of the River Arun, offers great shopping, entertainment, and day-to-day amenities. With two award-winning beaches, scenic river views, and captivating architecture like the Stage by the Sea, it's a popular destination for all. Leisure options include golf, cycling, and the Littlehampton WAVE Swimming and Sports Centre for indoor fun.



Cooper Adams



Norfolk Road., Littlehampton
Approx. Gross Internal Floor Area 1356 sq. ft / 125.85 sq. m

Illustration for identification purposes only, measurements are approximate, not to scale

Copyright © Cooper Adams

Council Tax band: D, EPC Energy Efficiency Rating: D, EPC Environmental Impact Rating: D

This material is protected by laws of copyright which is owned by Cooper Adams. Whilst every attempt has been made to ensure the accuracy of these details and floor plan contained here, they do not constitute any offer or contract or part thereof. All measurements are always maximum measurements into bay windows, alcoves and for L shaped rooms. No guarantee is given on total square footage taken from the floor plan. The details, pictures, maps and floor plans are for illustration purposes only and not to scale. Any appliances and/or services have not been tested. Cooper Adams is a trading name of Cooper Adams Estates Limited registered at Bishopstone. Registered in England and Wales. Our registered number is 07127482. Our VAT Number is 982847172.

Lettings | Sales | Free valuations | Land & New Homes | Mortgages

FULL DETAILS OF THE MATERIAL INFORMATION ARE ON OUR WEBSITE - VIEWING STRICTLY BY APPOINTMENT WITH COOPER ADAMS

FOR MORE PHOTOS AND TO BOOK A VIEWING VISIT OUR WEBSITE - Tel: 01903 791 792 - www.cooper-adams.com